



Environment Institute of
Australia and New Zealand Inc.

Symposium

With support from...



The National Policy Statement for Freshwater Management

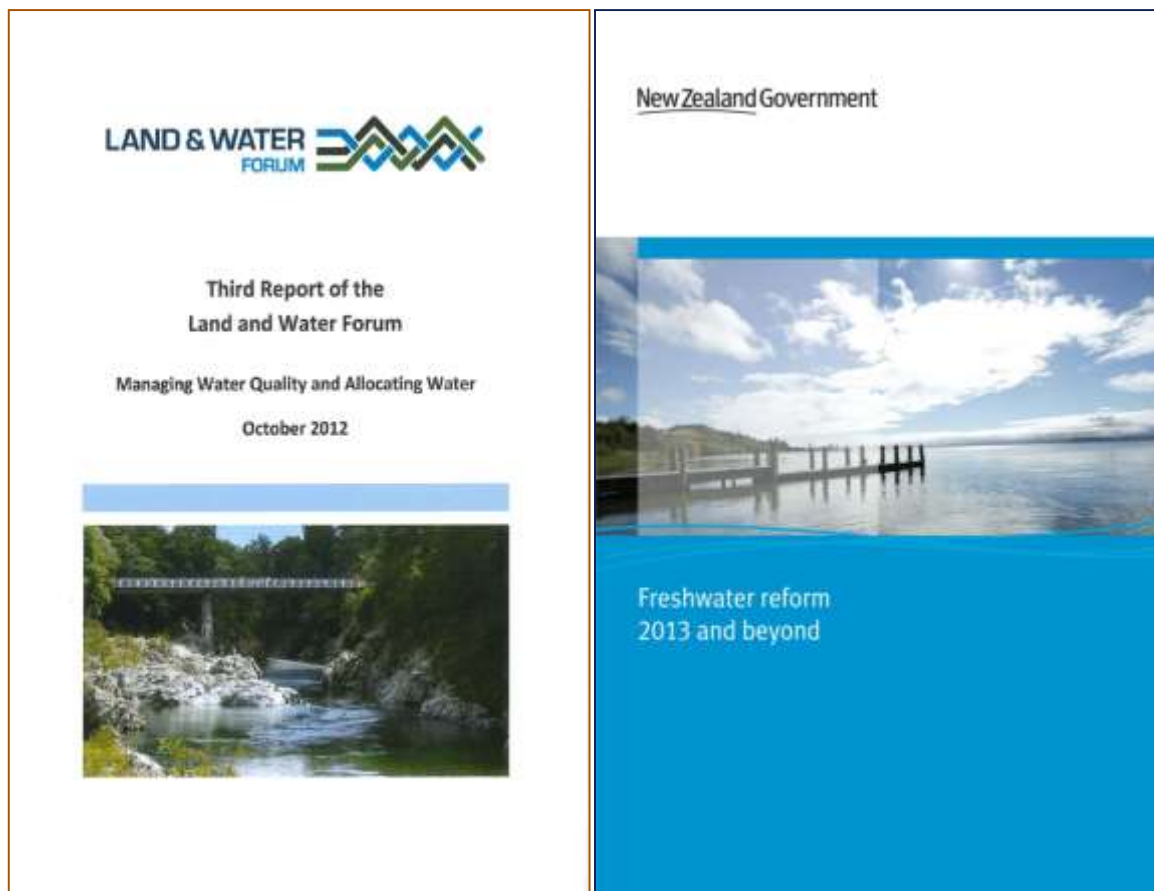
Barry Johnson



Ministry for the
Environment
Manatū Mo Te Taiao

Environmental stewardship
for a prosperous New Zealand
Tiakina te taiao kia tōnui a Aotearoa

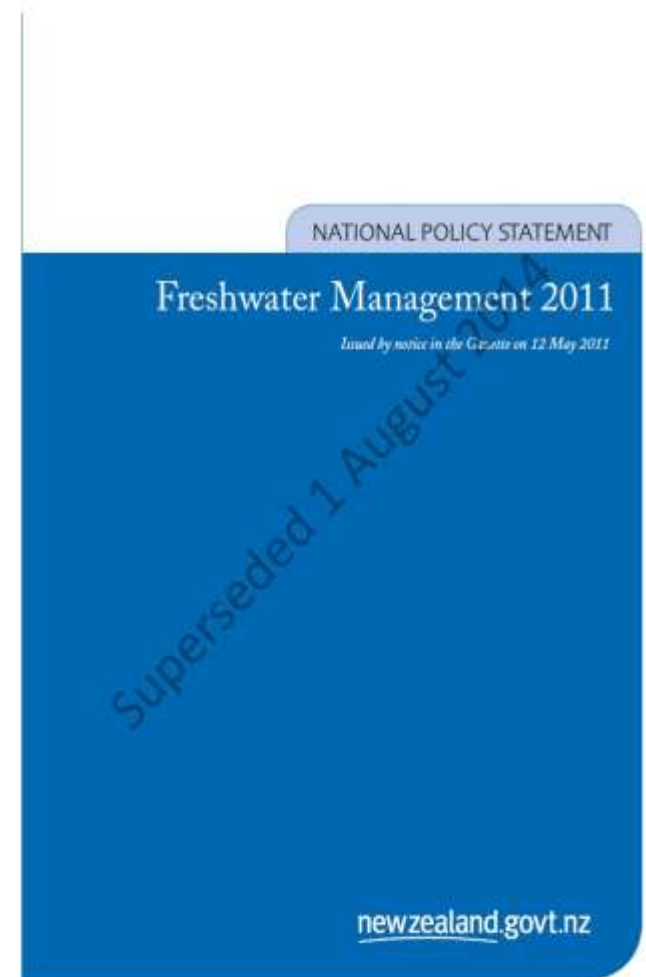
The Journey



- LAWFF
 - Iwi Leaders Group
 - Science panels
 - Iwi advisors
 - NOF reference group
 - Whole of Government
 - Consultations
- More to come...

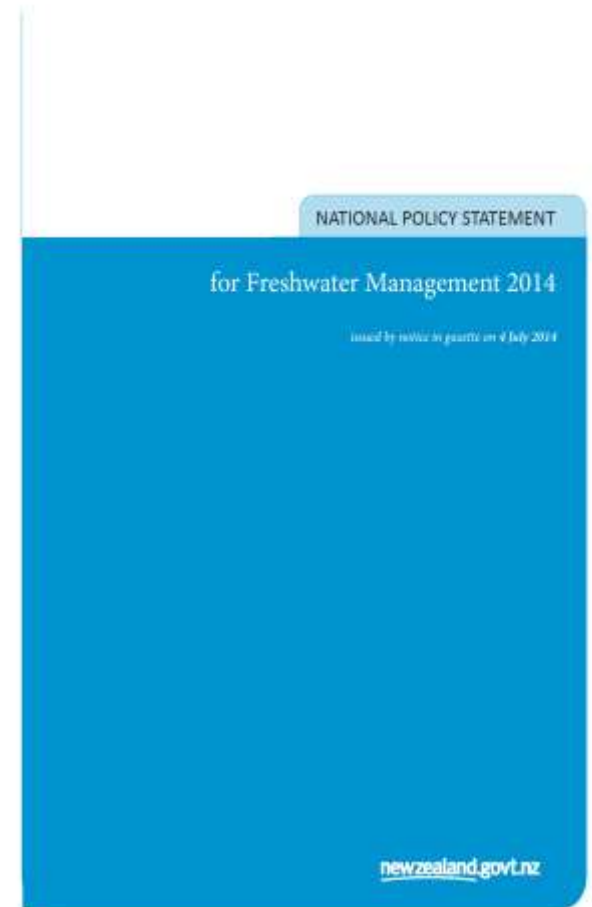
NPS-FM 2011

- Requirement to set Objectives and Limits
- Maintain or Improve
- Address over allocation
- Iwi involvement
- Timeframes



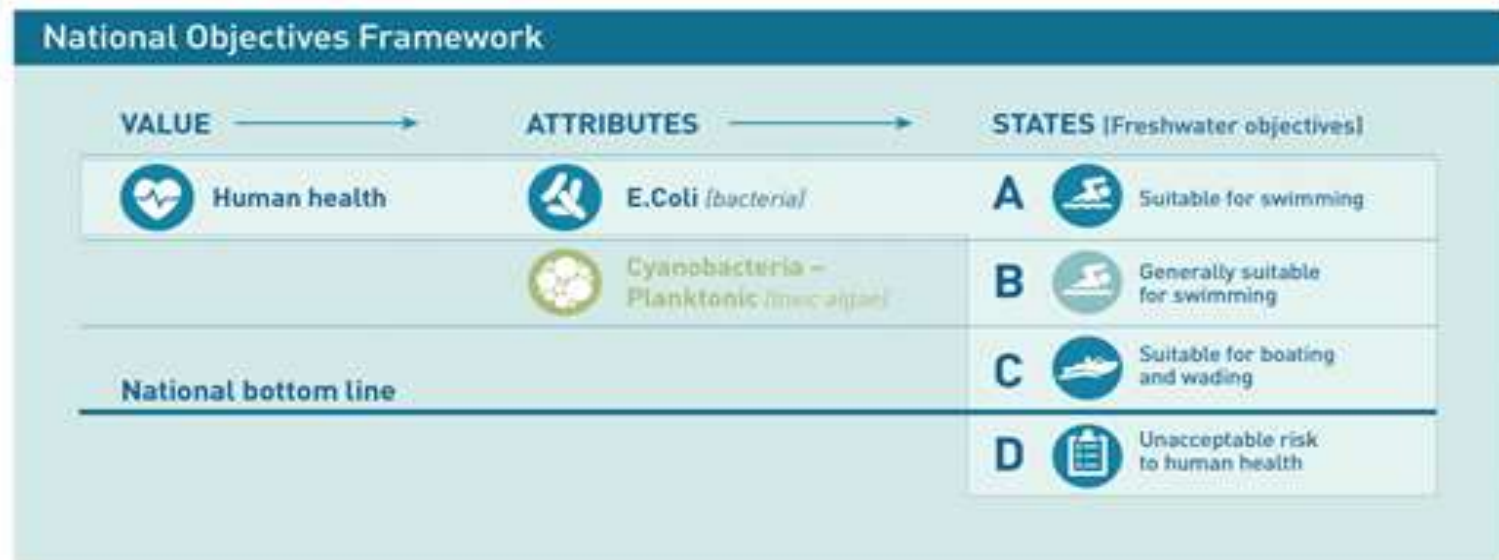
NPS-FM 2014 - What's new?

- Te Mana o te Wai
- Human health objective
- National Objectives Framework
- National bottom lines
- Accounting
- Monitoring
- Implementation timeframe



National Objectives Framework

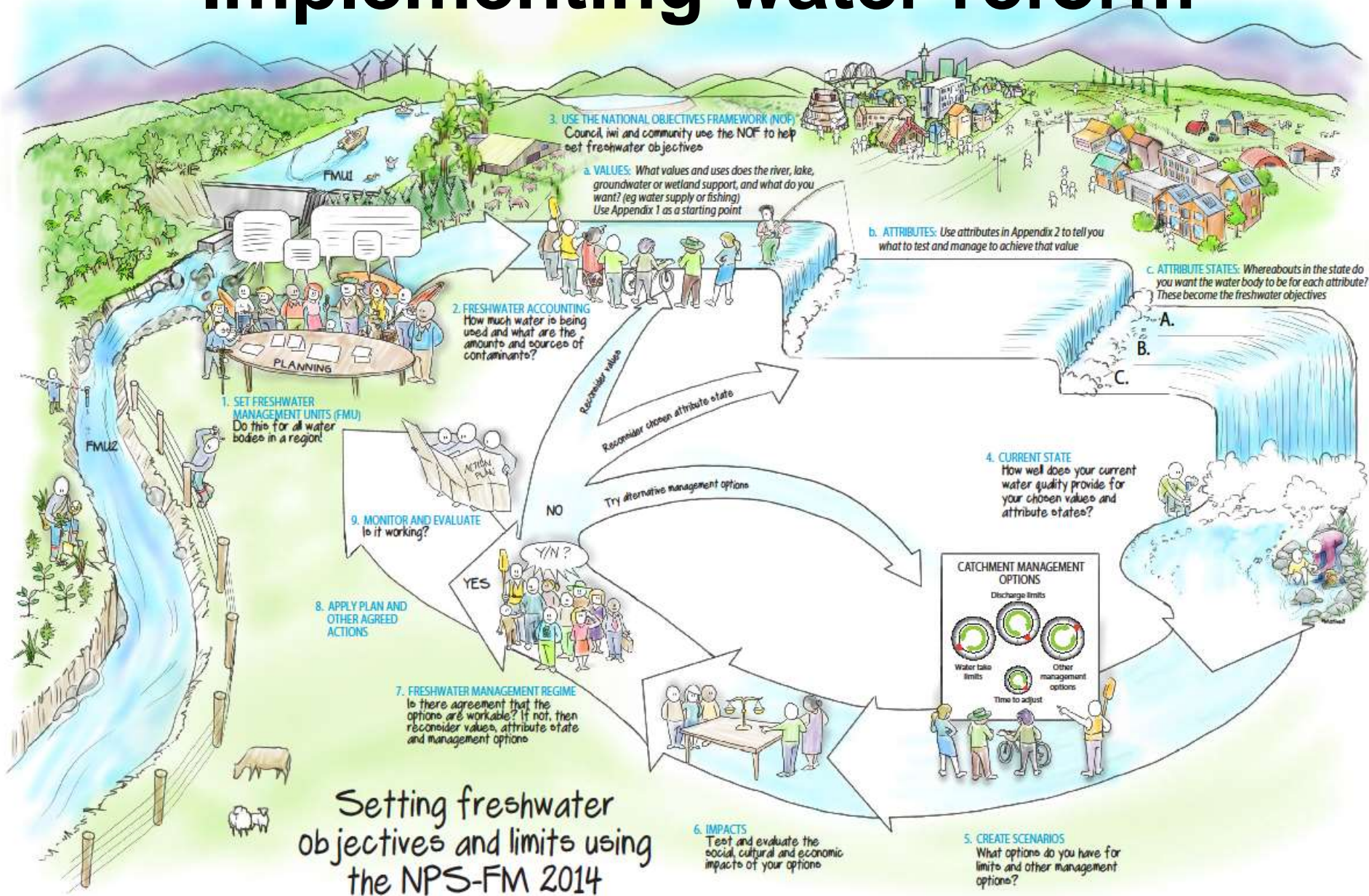
- A process for developing freshwater objectives
- A framework that has these components
 - ✓ Two compulsory values and 11 additional values
 - ✓ Attributes to formulate freshwater objectives
 - ✓ Compulsory bottom lines



National bottom lines

- Objective - not a “standard”
- Can be achieved over time
- Apply to compulsory values
- Only where current state below “C” band
- *“Maintain or improve”* above bottom lines

Implementing water reform



Setting freshwater objectives and limits using the NPS-FM 2014

Support and resources

Support through three teams:

- Implementation
- Guidance
- Environmental Economics Unit

Partnership and collaboration-Knowledge transfer-Capacity and capability building

The Implementation Team

Responsible for:

- Supporting implementation of the wider freshwater reforms
- Information exchange and knowledge transfer
- Hands-on with local government, industry, iwi, and the community

Partnership and collaboration-Knowledge transfer-Capacity and capability building

Current Ministry for the Environment Freshwater funded projects administered through Regional Councils

- Community Environment Fund (CEF) Round 6
- Fresh Start for Freshwater Fund
- Lake Programmes

Rotorua Te Arawa Lakes

Project cost: \$144.2 million
Crown funding: \$72.1 million

Waikato Regional Council

Managing diffuse discharges within water quality limits: Measuring how hard it is to change farm practice
Crown funding: \$135,000

Lake Taupo Protection

Project cost: \$81.2 million
Crown funding: \$35.6 million

Manawatu River

Project cost: \$30 million
Crown funding: \$5.2 million

Lake Horowhenua

Project cost: \$1.3 million
Crown funding: \$0.5 million

Marlborough District Council

E-planning for water allocation and use
Crown funding: \$150,000

Tasman District Council

Science basis for erosion and sediment control best practice guidance
Crown funding: \$120,000

Lake Brunner

Project cost: \$0.4 million
Crown funding: \$0.2 million

West Coast Regional Council

Tools to enable community engagement in settling water use limits that protect in-stream values
Crown funding: \$190,000

Auckland Council

Integration of three regional council sediment monitoring datasets.
Crown funding: \$115,000

Gisborne District Council

Native fish spawning areas identification and community restoration
Crown funding: \$65,000

Hawke's Bay

Outstanding freshwater body assessment criteria and assessment methodology
Crown funding: \$80,000

Wairarapa Moana

Project cost: \$2.2 million
Crown funding: \$1 million

Greater Wellington Regional Council

Collaborative modelling for resources management
Crown funding: \$100,000

Te Waihora/ Lake Ellesmere

Project cost: \$11 million
Crown funding: \$6 million

Wainono Lagoon

Project cost: \$2.1 million
Crown funding: \$0.8 million

Otago Regional Council

Water quality management in the lakes catchments of Otago
Crown funding: \$125,000

Waituna Lagoon

Project cost: \$1.6 million
Crown funding: \$0.8 million

Guidance

Guidance resources:

- Implementation Guide
- Six specific topics currently in development
- Additional guidance products being scoped

Partnership and collaboration-Knowledge transfer-Capacity and capability building

Environmental Economics Unit

- Joint venture economics projects
- Regional and catchment scale
- High quality analysis to help inform community decisions

Partnership and collaboration-Knowledge transfer-Capacity and capability building

Forward policy

Iwi rights and interests

Managing within water quality and quantity limits.

How can we:

- Get greater economic benefit, without degrading water quality
- Allocate water fairly, efficiently and sustainably
- Improve trade and transfer of entitlements



Thank you

Barry Johnson

Barry.Johnson@mfe.govt.nz



Ministry for the
Environment
Manatū Mo Te Taiao