



© Colac Otway Shire Council March 2011



Colac Otway  
SHIRE



# Overview

- Colac Otway Shire Council Profile
- Environmental Assets
- Legislative Protections
- Cressy – Shelford Road
  - Site Rehabilitation
  - Internal Process Improvements
  - External Awareness Raising
- Summary

# Colac Otway Shire Council



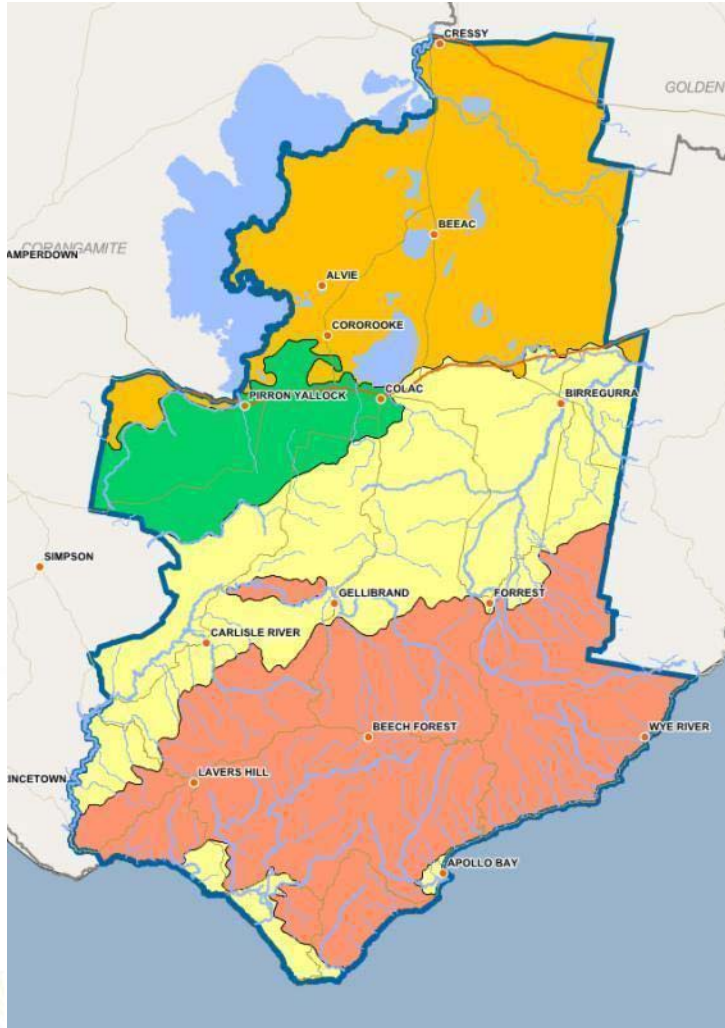
# Colac Otway Shire Council



## PROFILE

- 3,433 sq kilometres
- 1,632 km of Roads:
- 14,405 Rateable Properties
- Operating Budget = \$32M
- Two major centres – Colac and Apollo Bay
- Approx. 30% Crown Land
- Industries include:
  - Agriculture (cropping and dairying);
  - Tourism (Great Ocean Road)
  - Timber Production

# Bioregions



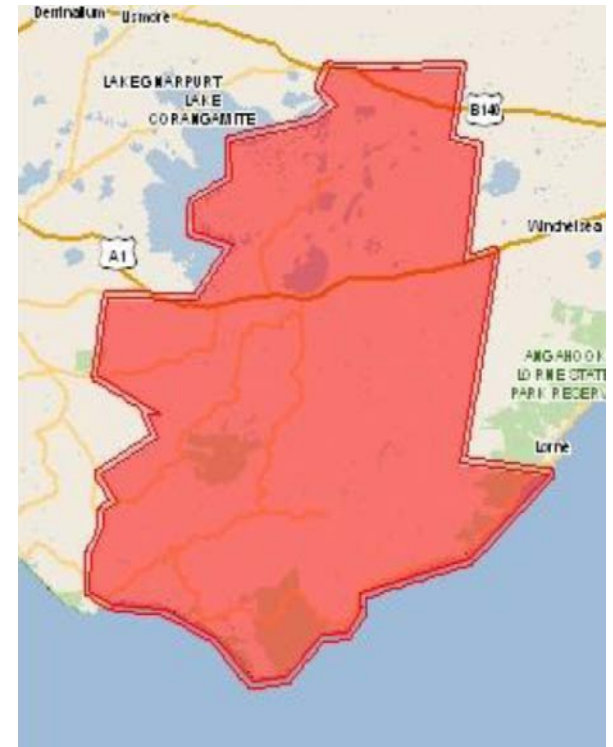


# Environmental Assets

## EPBC Act Protected Matters Reporting Tool for Colac Otway Shire:

- 56 Threatened Species
- 49 Migratory Species
- Two Threatened EVC's
- Two RAMSAR Wetlands

Assets found on Private  
and Public land,  
including Local Roads



# EPBC listed Fauna & Invertebrate – Colac Otway



Growling Grass Frog - Vulnerable

<http://bird.net.au/bird/index.php?title=Category:Amphibians>



Striped Legless Lizard - Vulnerable

[http://bird.net.au/bird/index.php?title=Striped\\_Legless\\_Lizard](http://bird.net.au/bird/index.php?title=Striped_Legless_Lizard)



Golden Sun Moth – Critically Endangered

© Colac Otway Shire Council. March 2011.  
[http://bird.net.au/bird/index.php?title=Golden\\_Sun\\_Moth](http://bird.net.au/bird/index.php?title=Golden_Sun_Moth)



Australian Grayling - Vulnerable

Image: Gary Backhouse. [http://bird.net.au/bird/index.php?title=Australian\\_Grayling](http://bird.net.au/bird/index.php?title=Australian_Grayling)





# EPBC listed Flora – Colac Otway



Tall Astelia – Vulnerable

<http://www.environment.gov.au/biodiversity/threatened/publications/recovery/pubs/astelia-australiana.pdf>



Spiny Pepper-cress – Vulnerable

[http://bird.net.au/bird/index.php?title=Spiny\\_Peppercress](http://bird.net.au/bird/index.php?title=Spiny_Peppercress)



Spiny Rice-flower – Critically Endangered

[http://bird.net.au/bird/index.php?title=Spiny\\_Rice-flower](http://bird.net.au/bird/index.php?title=Spiny_Rice-flower)





# EPBC listed Communities – Colac Otway



Grassy Eucalypt Woodland –  
Critically Endangered

<http://www.goldenplains.vic.gov.au/site/page.cfm?u=349>



Natural Temperate Grasslands -  
Critically Endangered

# Other Protected Species



Otway Black Snail

[http://places.rnr.id.au/Great\\_Ocean\\_Road/7.html](http://places.rnr.id.au/Great_Ocean_Road/7.html)



Swamp Antechinus

[http://bird.net.au/bird/index.php?title=Swamp\\_Antechinus](http://bird.net.au/bird/index.php?title=Swamp_Antechinus)



Slender Tree Fern

<http://www.oren.org.au/issues/endspp/slendertreefern.htm>



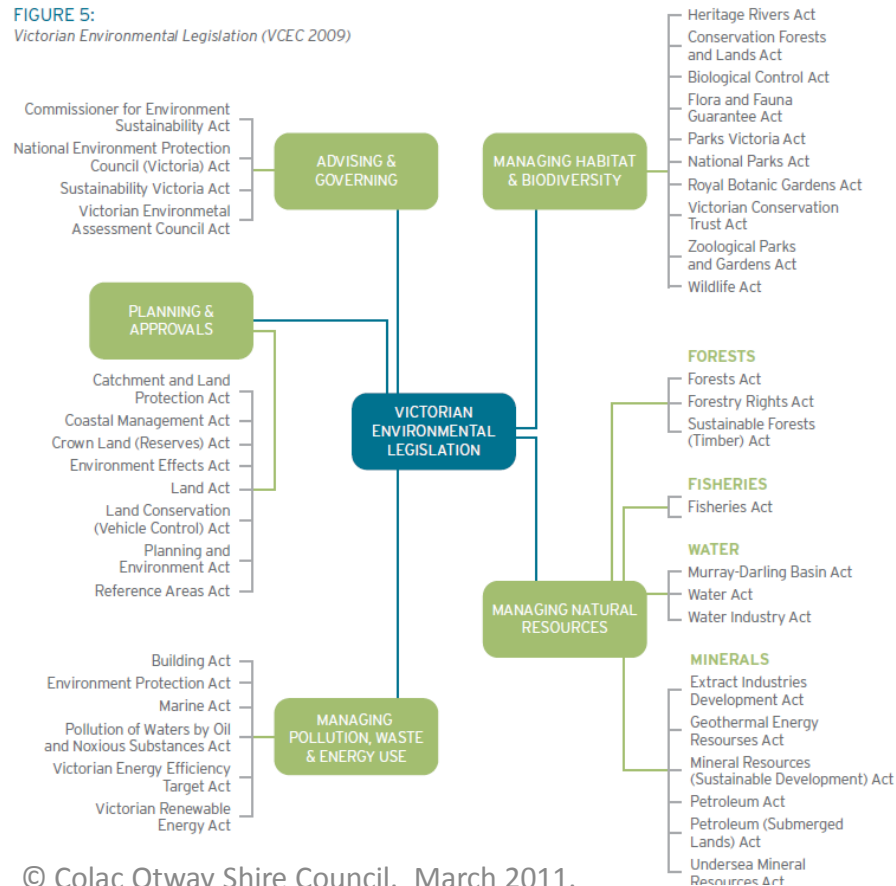
# Legislative Protection

Federal

Victorian

## Environmental Protection and Biodiversity Conservation Act 1999

FIGURE 5:  
Victorian Environmental Legislation (VCEC 2009)



# Cressy-Shelford Road

- Council contracted works for the Cressy-Shelford Road in May 2008
- Traffic movement and stockpiling on the roadside reserve
- Approx. 2.07 hectares of plains grassland removed
- Alleged to have impacted upon the Spiny Rice Flower (e.g. destroyed, damaged)
- Alleged to have impacted upon the Striped Legless Lizards.



# Cressy-Shelford Road



# Works Methods





# Works Methods



# Reactive Process

- Notification from local DSE Officer
- Onsite meeting with DSE and Council Staff
- Council then notified DEWHA of the incident
- Council convened a key stakeholder group (DSE, CCMA, Australian Government State Biodiversity Officer)



# Consequences

- Breached the EPBC Act, FFG Act and Wildlife Act (total \$690,000)
- Signed EU with then DEWHA (now SEWPAC)
- Signed MoU with DSE

Action	Resources
Site Rehabilitation	\$180,000
Internal Procedure Improvements	\$80,000
External Awareness Raising	\$30,000
Payment to DSE	\$250,000
Coordination and Reporting	\$150,000
TOTAL	\$690,000

# Remedial works





# Condition December 2009



# Botanist Report- December 2009



*“Overall, the disturbed areas are regenerating well and because of the timely rehabilitation works, are unlikely to suffer permanent damage”*

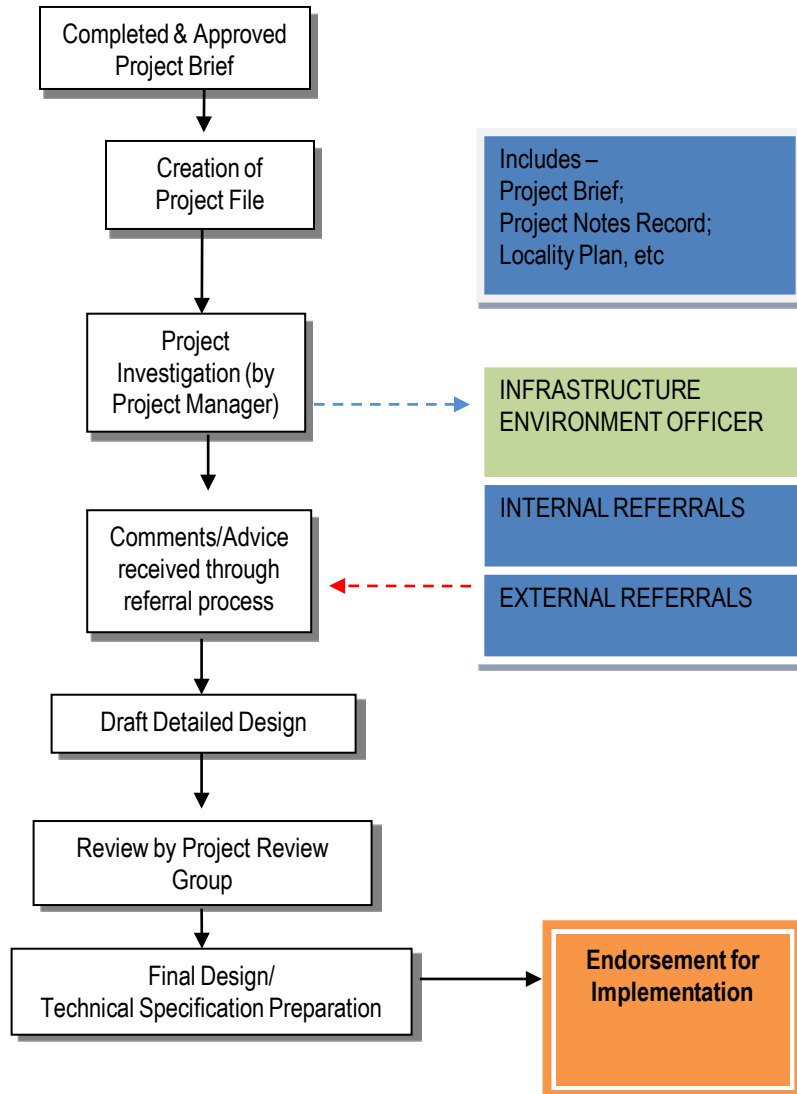




# Internal Process Improvements

- Internal procedure improvement
  - Project Development and Delivery Processes
  - Currently apply to Maintenance and Capital Works
- Internal Training and Awareness
- Roadside Mapping and Management Plan

# Project Development





# Project Delivery

**Endorsed for  
Implementation**

Included in Environmental Information  
in quote and tender docs

Pre Start Meeting with Contracts  
Co-ordinator

Following documents submitted:

- Environmental Management Plan
- Site specific Environmental Risk Management Plan
- Safe Work Method/JSA
- Traffic Management Plan

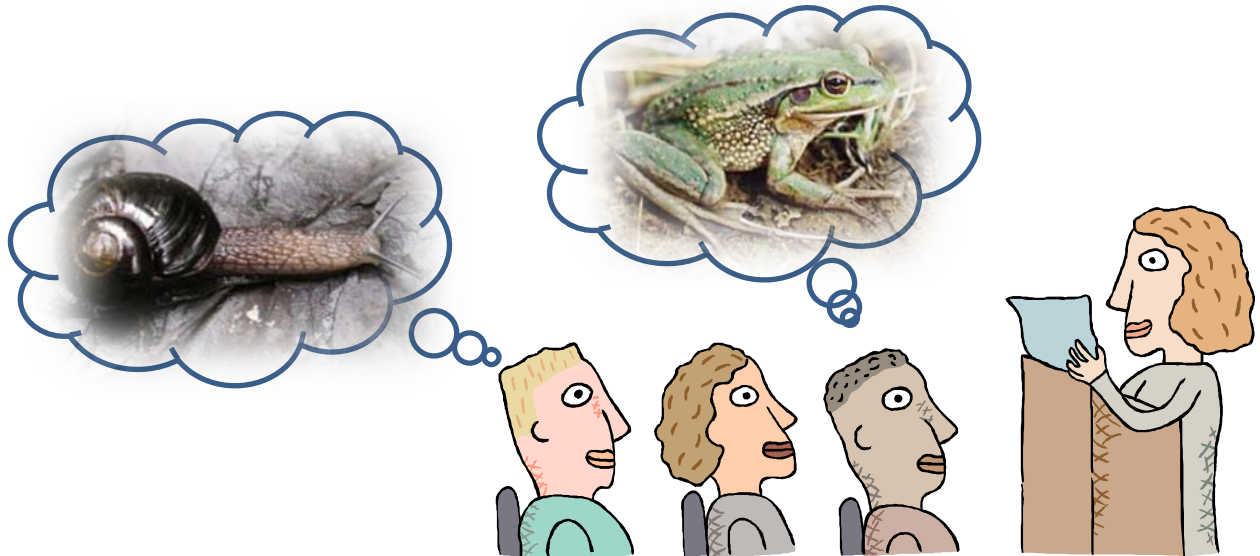
Reviewed and approved

Site Inspection of high  
conservation sites

**Environmental  
considerations complete**

# Internal Training and Awareness

- Importance of biodiversity conservation
- Councillors, General Managers, Managers and Officers.





# Roadside Vegetation Mapping

GBM Proc: Attributes

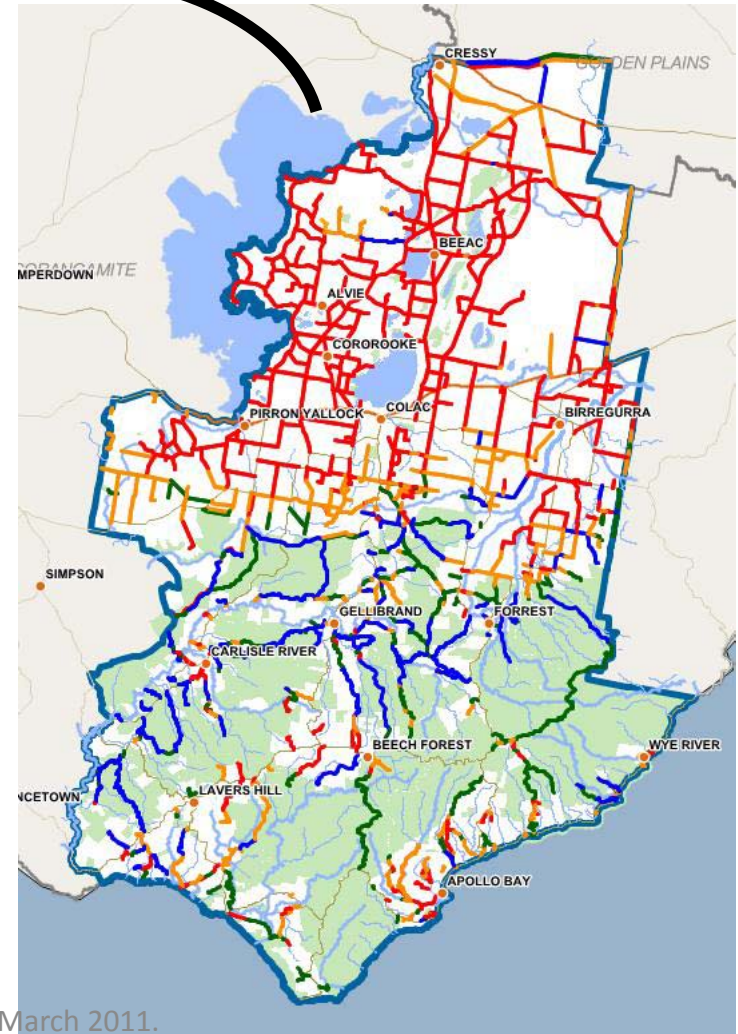
Very High 26

Zone

Show or hide RCAC Detail

Hide

Name	Value
RCAC CONSERVATION VALUE	Very High
RCAC SCORE	26
RCAC Detail	Hide
HABITAT SCORE ESTIMATE	40
Habitat Detail	Hide
Fuel Detail	Hide
MANAGEMENT PRESCRIPTION	934H.pdf
Bio-Region	Victorian Volcanic Plain
EVC	Brackish Grassland (934)
EVC Source	survey
EVC Notes	934
Road Type	Main Road
Length	98.9391
Left Road Width	N/A
Right Road Width	N/A
Assessor	Tim D'Dmbrain & Roger Thomas
Assessment Date	19/11/2004
Zone ID	20071
Zone Flora	
Buttercup.n	
Variable Groundsel.n	
Salt Phratia.n	
Spiny Peppergrass.e	
Tree Violet.n	
Common Blown-grass.n	
Adamson's Blown-grass.v	
New	
Zone Weeds	
Sweet Briar <i>Rosa rubiginosa</i>	
Cape Weed <i>Arctotheca calendula</i>	
Prairie Grass <i>Bromus catharticus</i>	
Sweet Melilot <i>Mellilotus indicus</i>	
Barley-grass <i>Hordeum leporinum</i>	
Common Sow-thistle <i>Sonchus oleraceus</i>	
Toowoomba Canary-grass <i>Phalaris aquatica</i>	
Common Dodder <i>Cuscuta epithymum</i>	
Strawberry Clover <i>Trifolium fragiferum</i> var. <i>fragiferum</i>	
Buck's-horn Plantain <i>Plantago coronopus</i>	
Prostrate Knotweed <i>Polygonum aviculare</i> s.l.	
Punus <i>Punus</i> spp.	
Spear Thistle <i>Cirsium vulgare</i>	



# External Awareness Raising

- Target wider community (CFA, farmers)
- Value and legislative protections of threatened species
- Workshops (e.g. Municipalities)
- Signage
- Mail outs





# Summary

- Colac Otway Shire contains many EPBC protected species and communities
- Greater awareness of the EPBC Act and its requirements
- Additional resources to ensure compliance with EPBC Act
- Colac Otway Shire has improved project management systems



Colac Otway  
SHIRE

# Questions?

Travis Riches

Infrastructure Environment Officer

© Colac Otway Shire Council. March 2011.

