

When you
think with a
global mind
problems
get smaller



Ravenhall Prison Project
Presented to
ACLCA / EIANZ Seminar
October 2014



Ravenhall Prison Site

Proposed Development

- Intended to be developed as Ravenhall Prison – NEPM A (2013)

Historic Uses

- Former Defence Rocket testing Facility
- Former Defence Munitions Storage – WWII
- Used for a variety of potentially contaminating practices

Located in a former rural setting adjacent to sensitive grasslands, between two prisons and the western bypass.

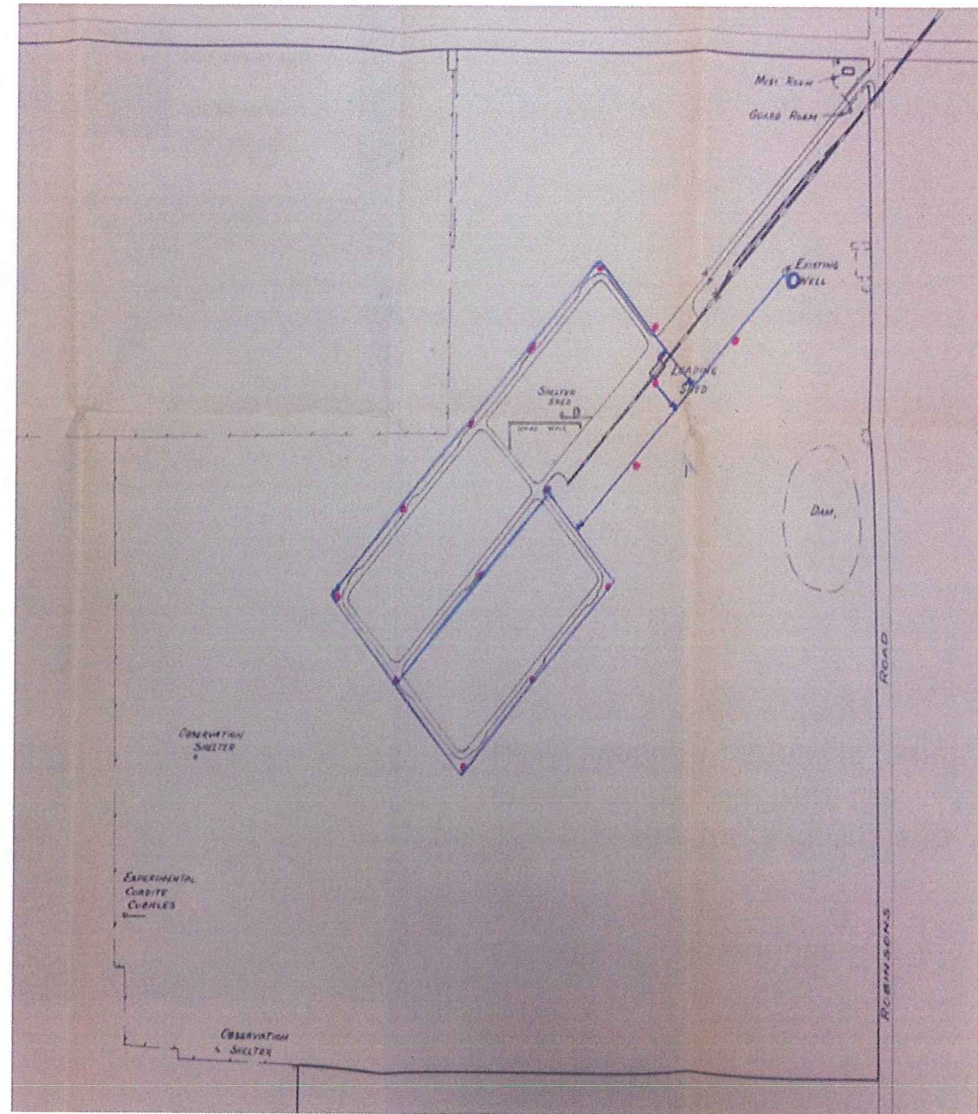
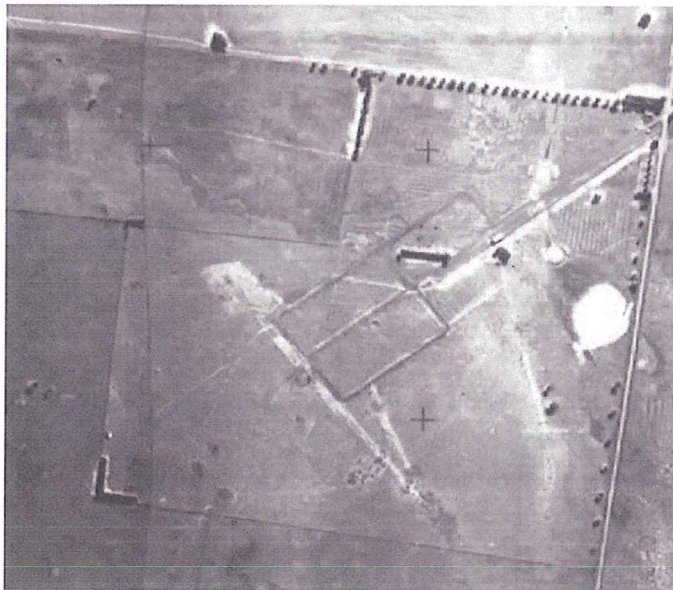
Assessment Criteria

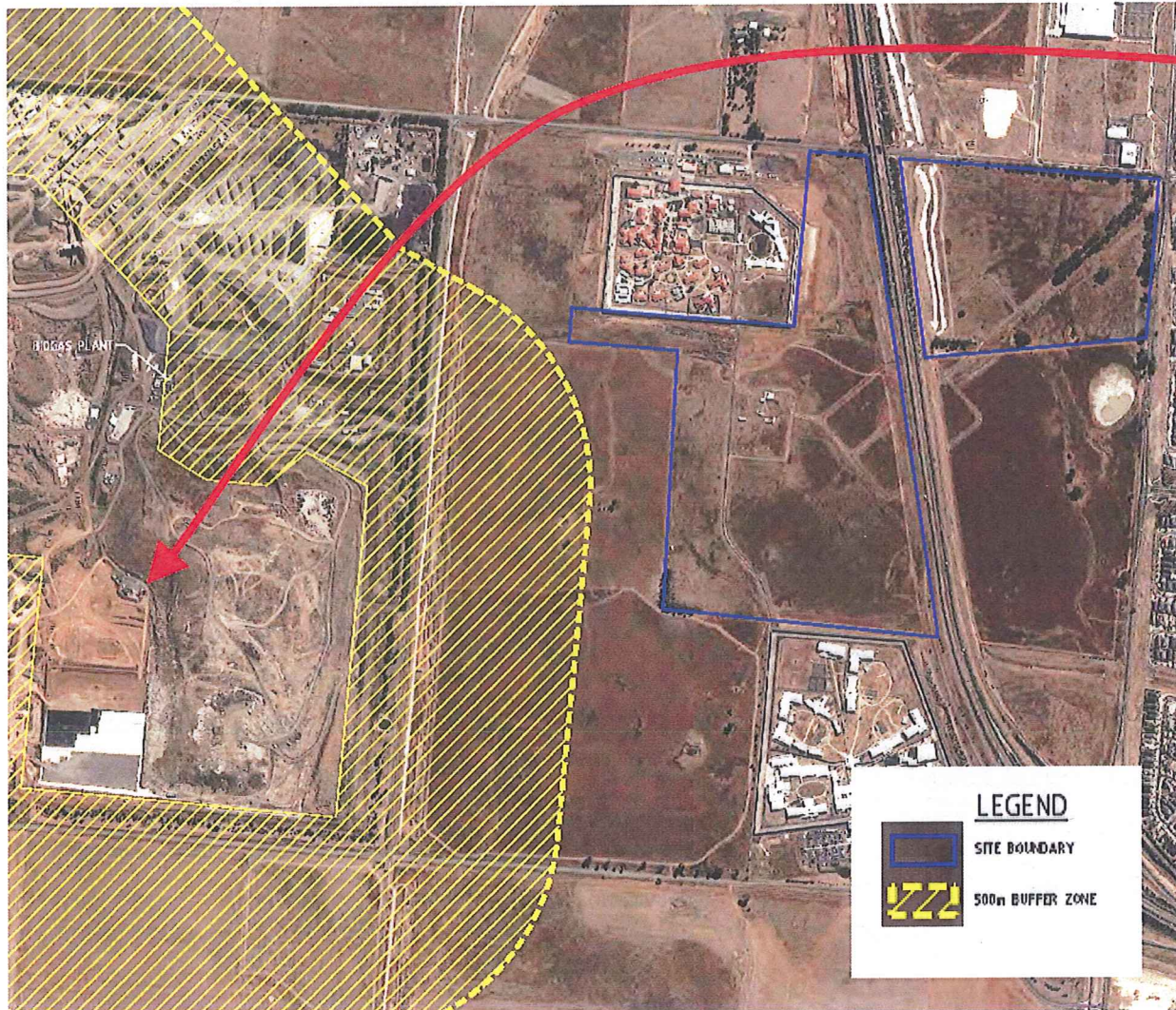
- A Prison requires assessment HILs equivalent to residential BU criteria for soil
- Segment C groundwater.
- Site Specific ABC for metals EILs



Assessment Goals – Contaminated Land/Geotechnical

- Collect and review data relevant to potentially contaminating activities at the site.
- Develop a works EMP that met the requirements of the overarching Flora and Fauna EMP (Biosis)
- Assess site conditions to allow completion of a Statutory Environmental Audit (completed by Warren Pump of ERM).
- Complete Hazmat, Geotechnical, Landfill Gas and soil and groundwater assessments within project timelines and without impeding other stakeholders and service providers.





- Christies Road Landfill adjacent to site.
- The potential for landfill gas to impact on the site from the Boral Western Landfill is found to be low and acceptable.

Identified Asbestos containing materials

Illegally dumped asbestos sheeting

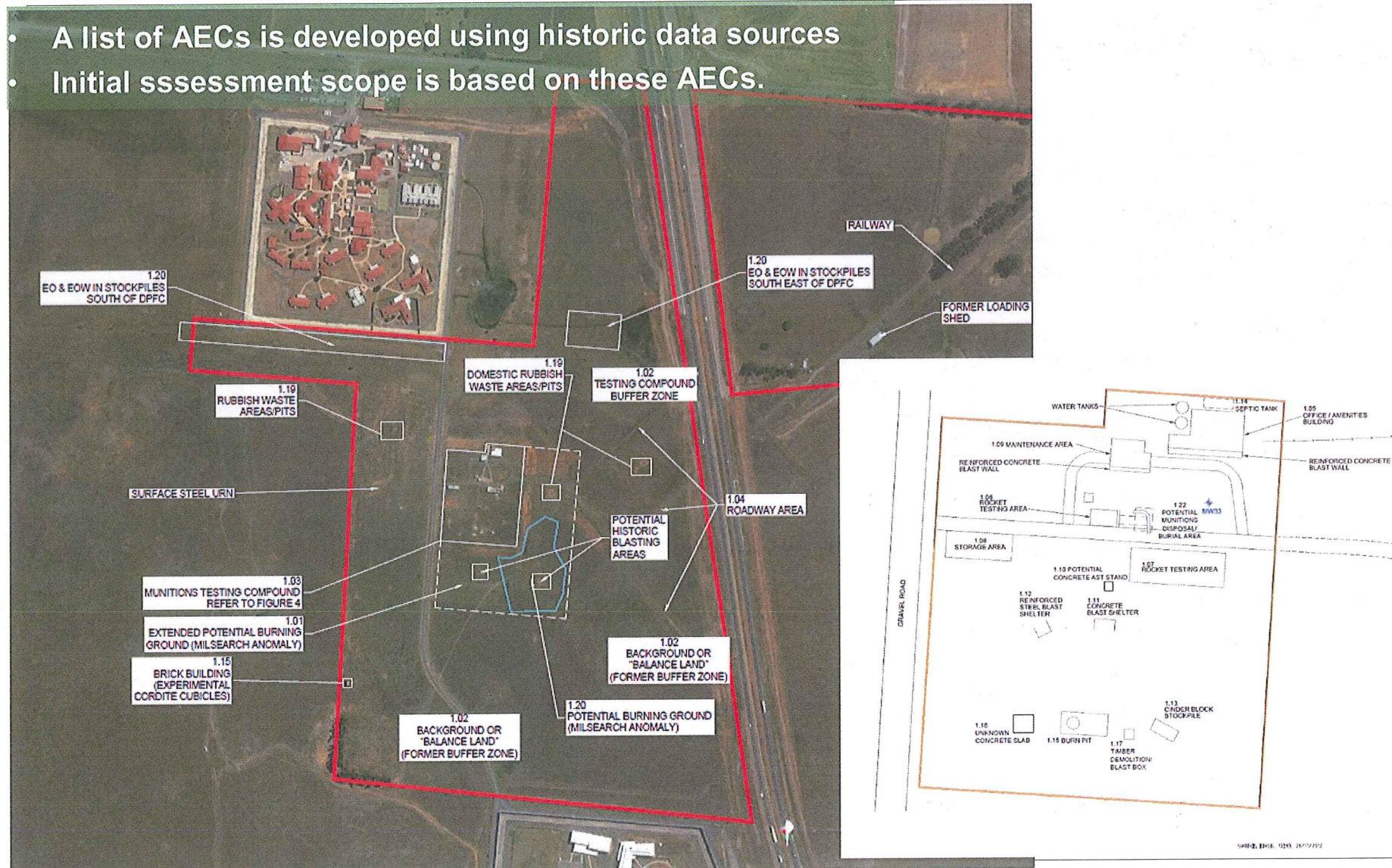


Experimental Cordite Building



Initial Phase 1 ESA works - Areas of Environmental Concern

- A list of AECs is developed using historic data sources
- Initial assessment scope is based on these AECs.

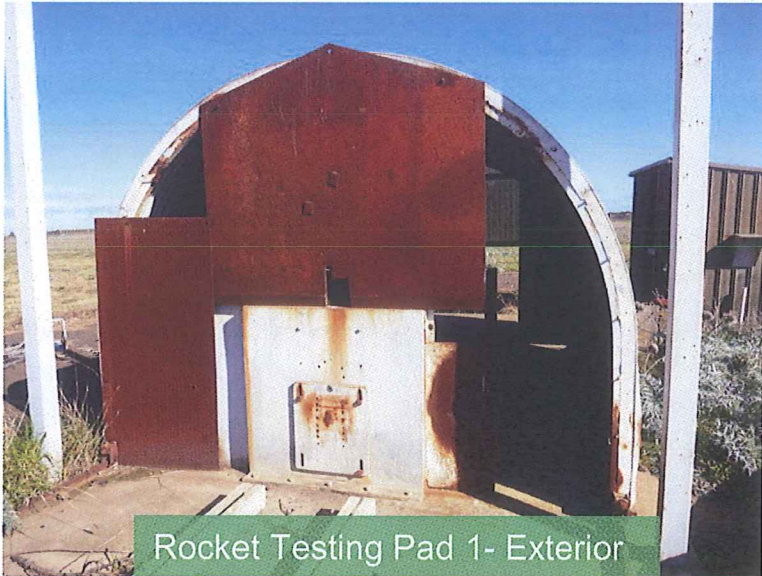


A presentation to ACLCA / EIANZ Seminar
20 October 2014

AEC Identification – Required Pre Demolition Works.



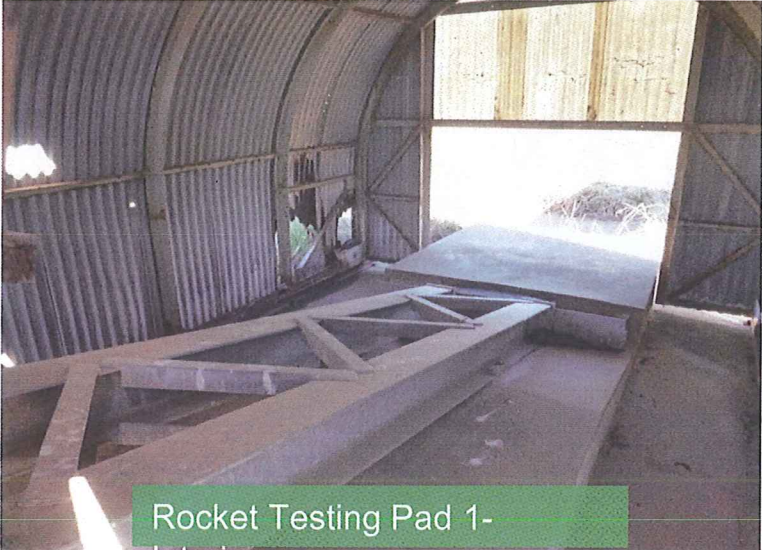
Rocket Testing Pad 2- Exterior



Rocket Testing Pad 1- Exterior



Admin building with concrete blast wall



Rocket Testing Pad 1- Interior

Demolition

Demolition identified significant and unexpected footings and foundations

Demolition of all structures on the site (which included our AECs)

- Administration Buildings,
- 2 Rocket Testing Pads
- AST stands
- Demolition Boxes
- Burn Pits
- Septic Tank
- Experimental cordite building
- Several storage sheds



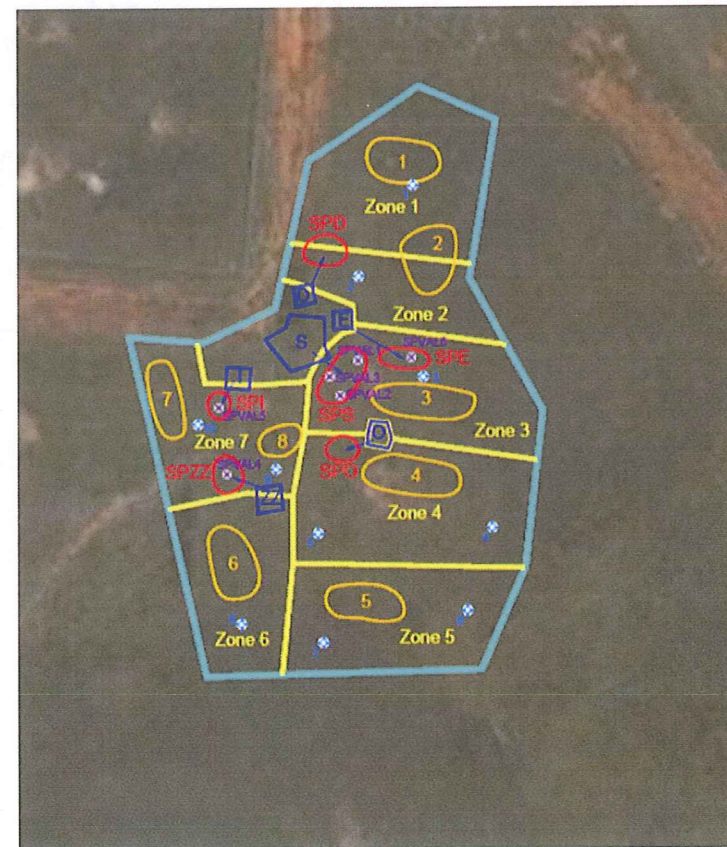
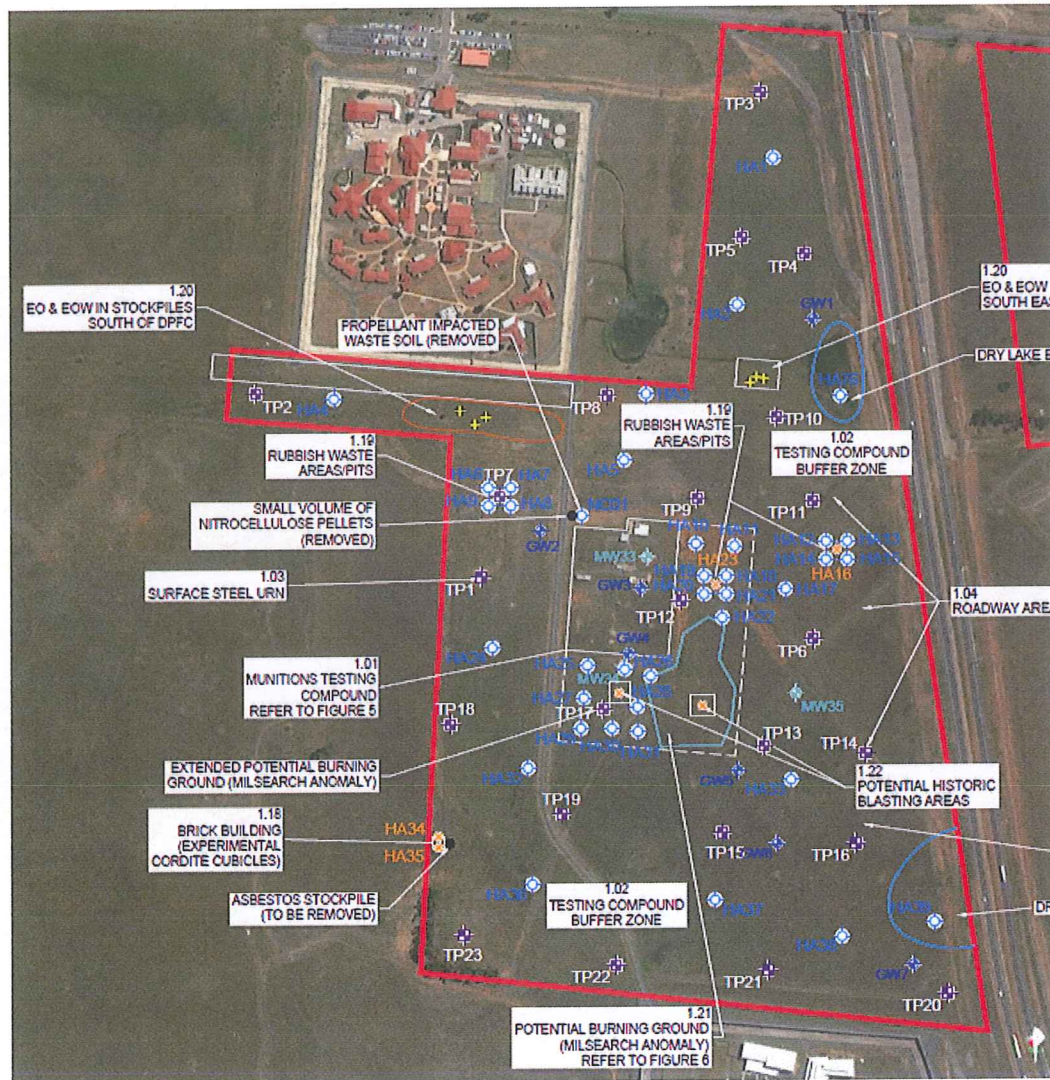
Demolition Works



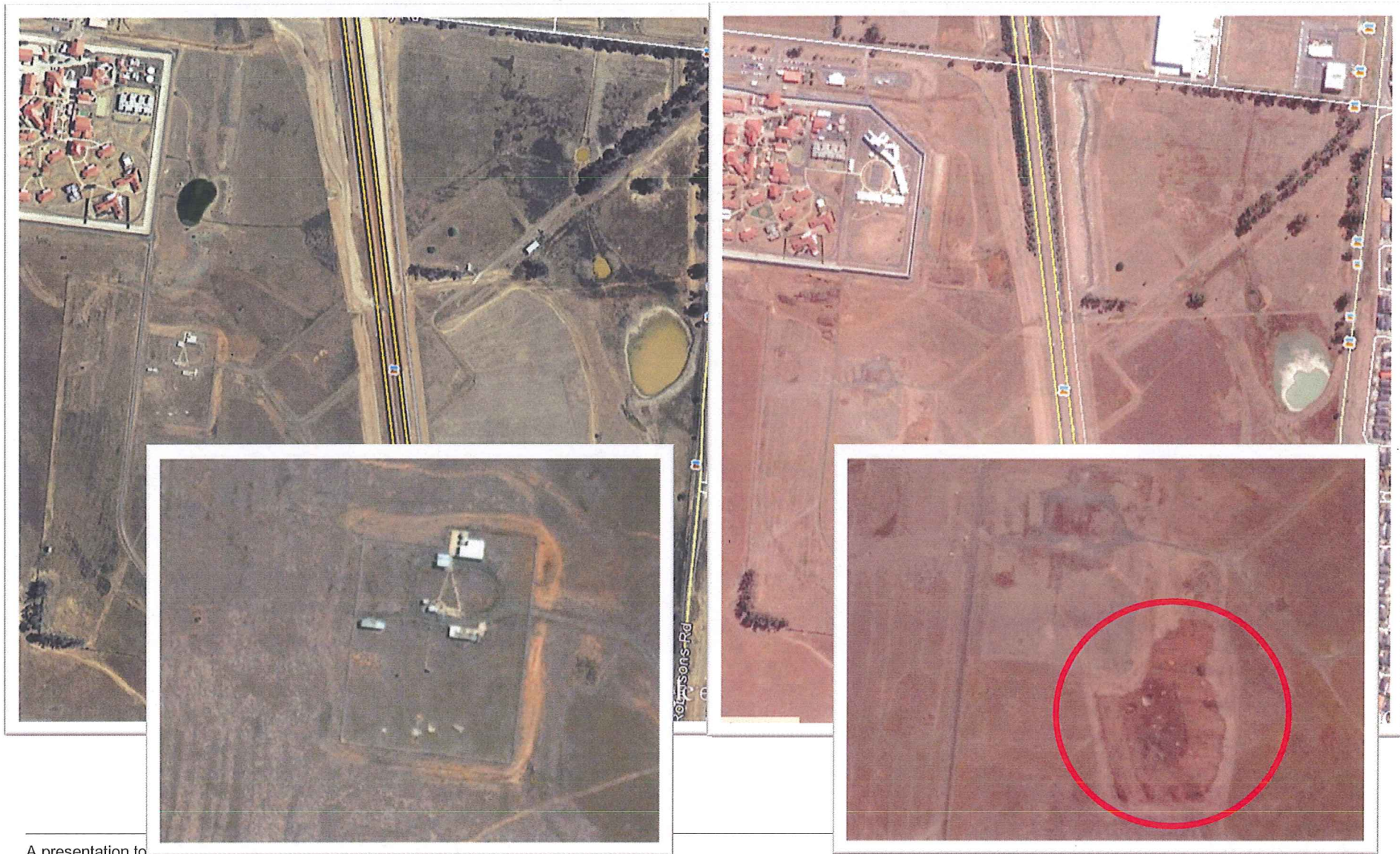
- Completed following UXO clearance of the compound area
- Allowed for removal and assessment of several key AECs providing assessment access.



Phase 2 ESAs and Geotechnical Assessments.

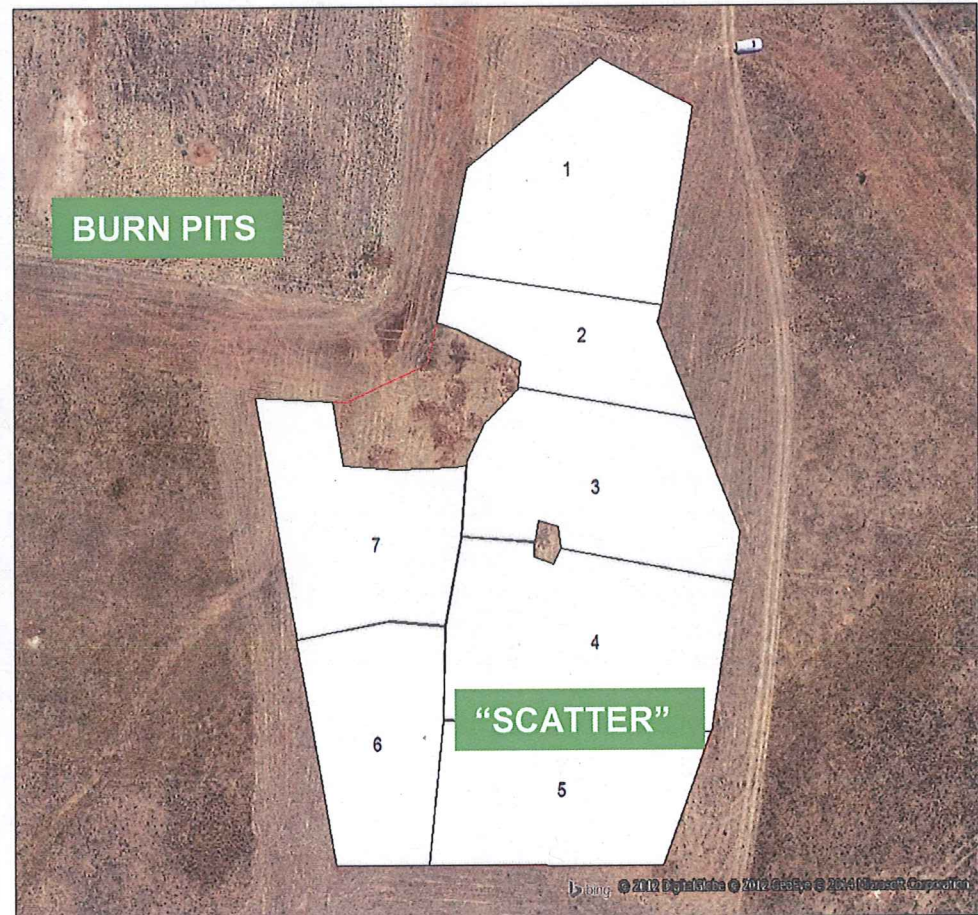
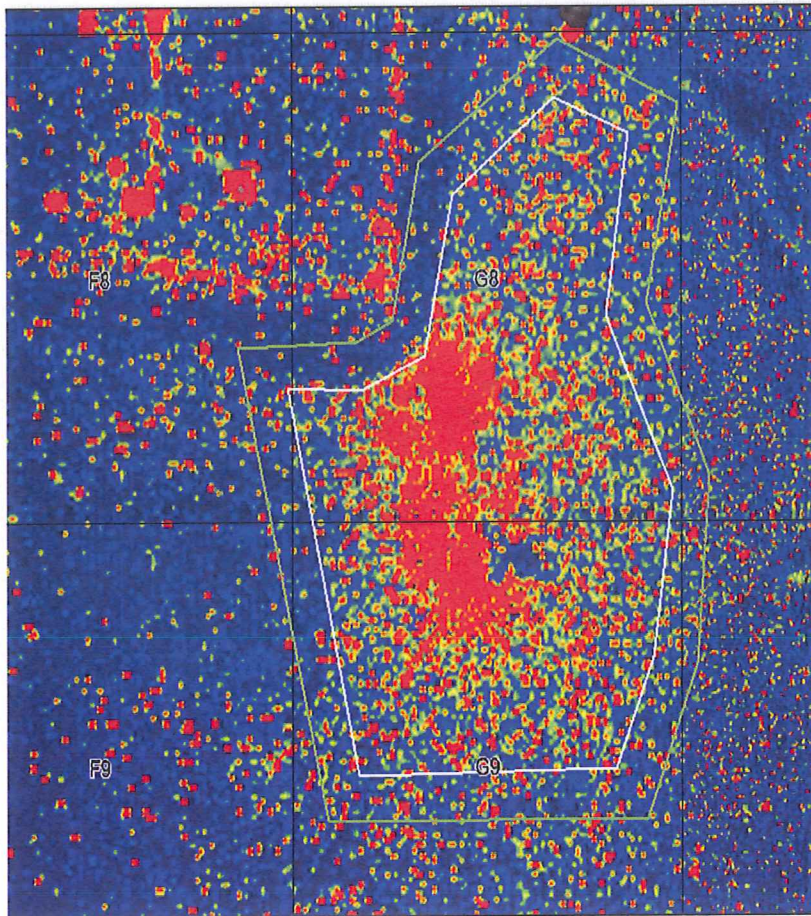


Ravenhall Sites 1 and 2 – Demolition and UXO/EOW Works in Compound

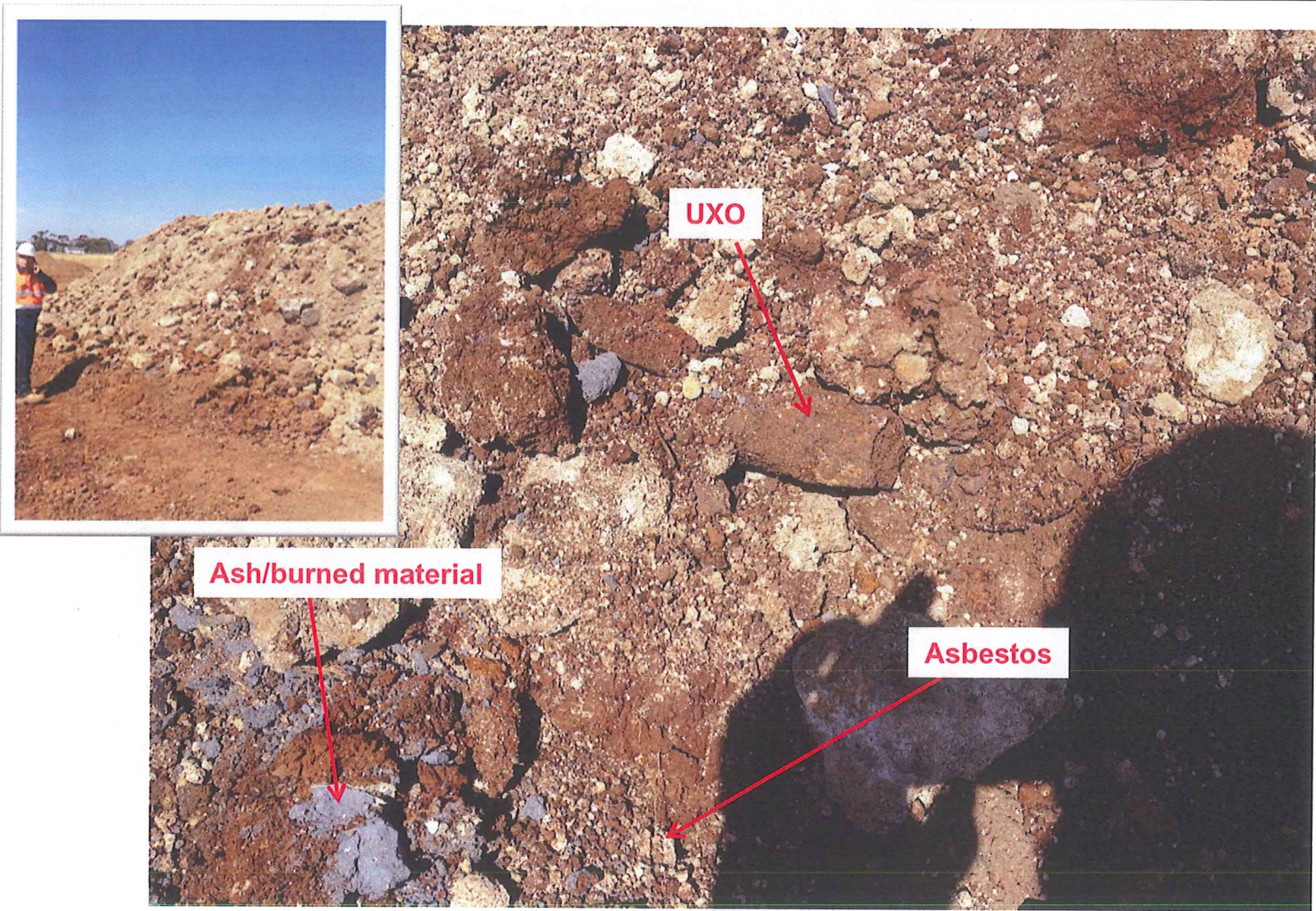


A presentation to
20 October 2014

The near surface anomaly



Impacted soil from burn pit area – asbestos, EOW, ash and UXO



Burn Pit Ash – requiring hand removal from surface soils.



Chance Finds - Co-operative approach essential to all assessment work

- This asbestos abatement was conducted with a team of safe-guarding UXO technicians, Class-A Asbestos removalists, Hygienists and Class A excavator operator.

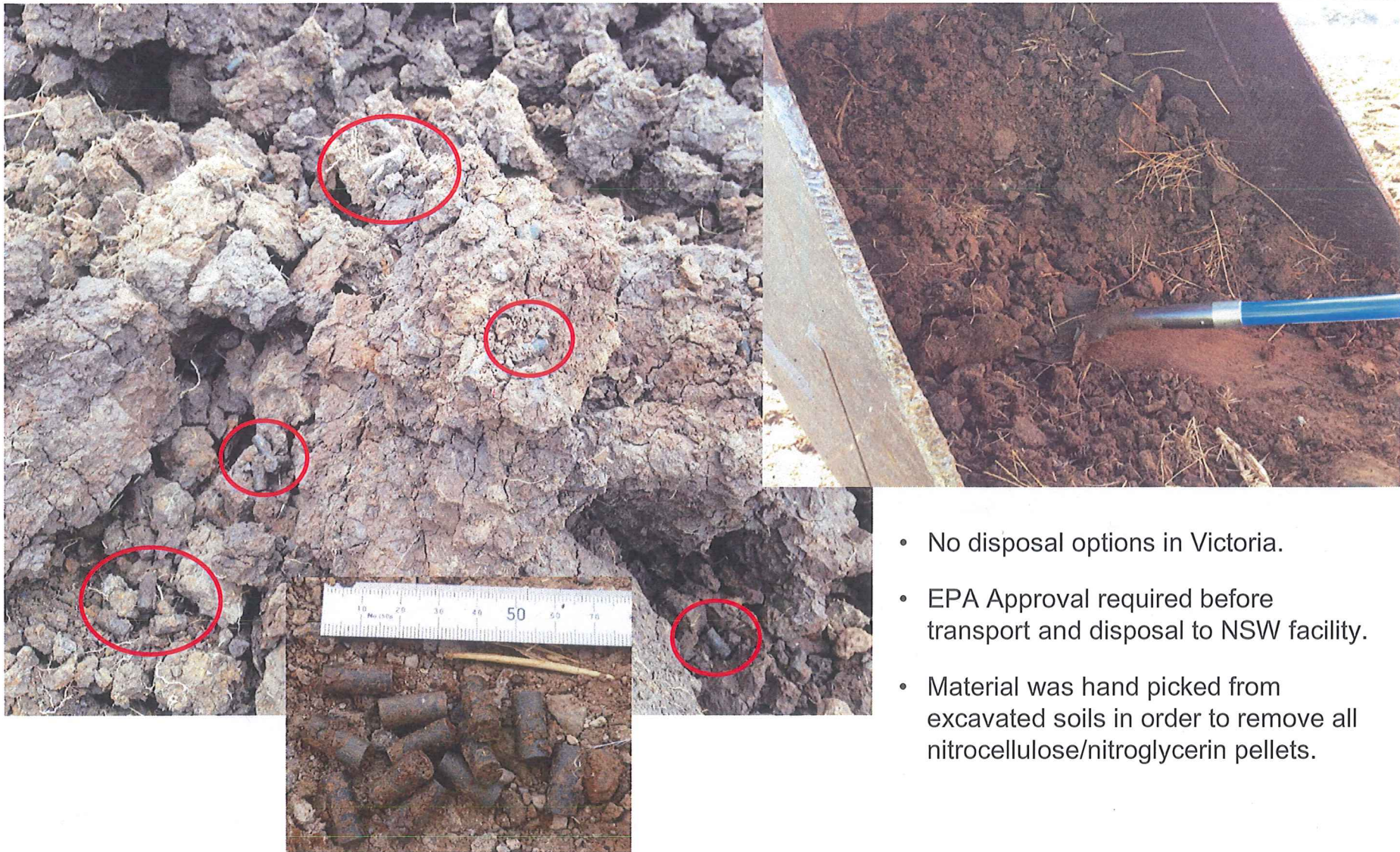


Chance UXO finds. Another consideration for ESA completion.



Additional UXO chance finds included marine flares and hand grenades.

Nitrocellulose in soil



- No disposal options in Victoria.
- EPA Approval required before transport and disposal to NSW facility.
- Material was hand picked from excavated soils in order to remove all nitrocellulose/nitroglycerin pellets.

UXO and Flora Fauna Assessment and Salvage allow detailed visual contamination of assessment areas



Milsearch Scrape Areas – 6 in total



Biosis Striped Legless Lizard Salvage Areas



- Completion of ESAs, Geotech, demolition and other assessment works built into final site report.
- Certificate of Environmental Audit Issued for Site 1 addressed the requirements of Schedule 8 of the Special Use Zone – Section 5.



