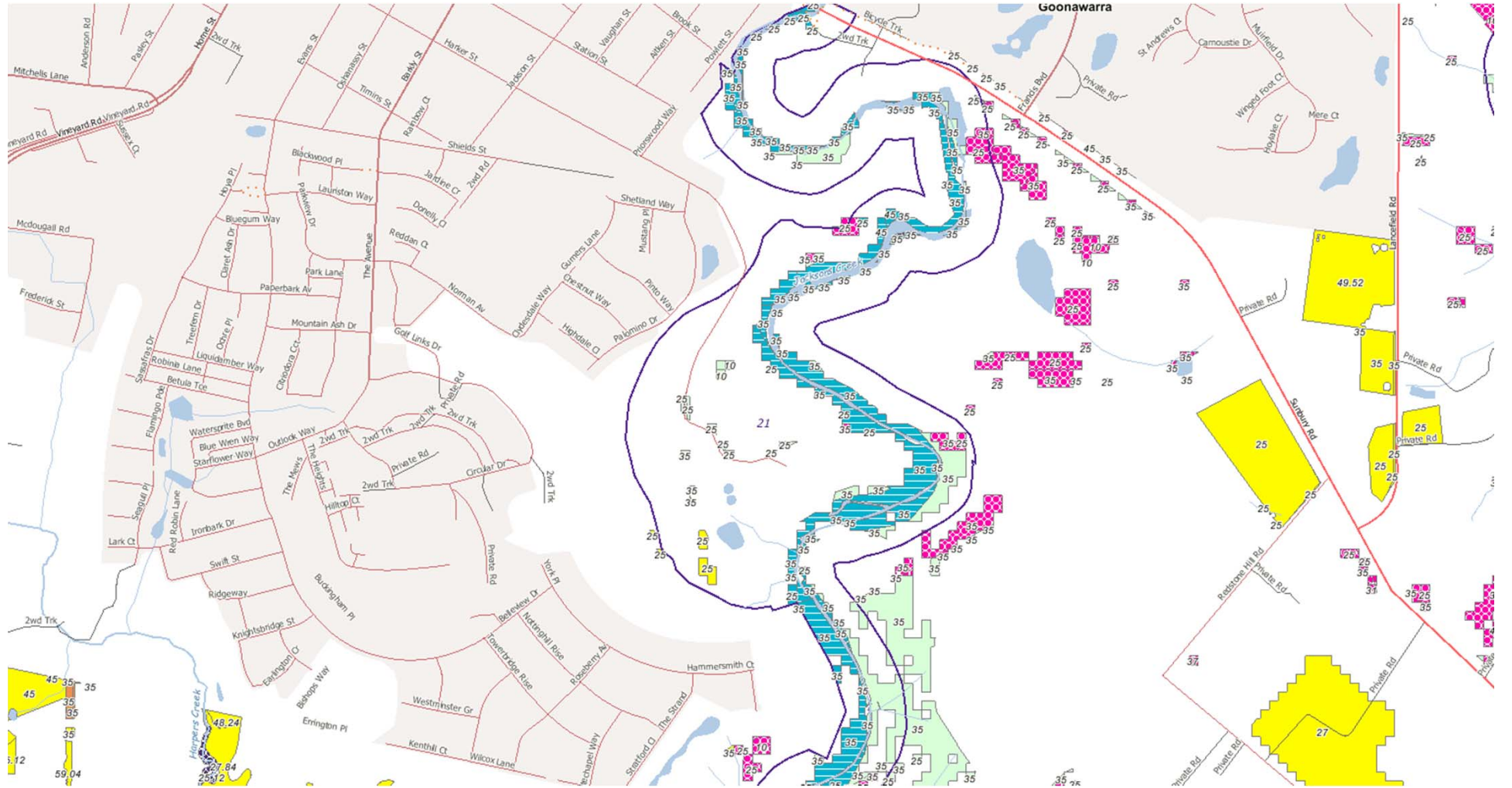


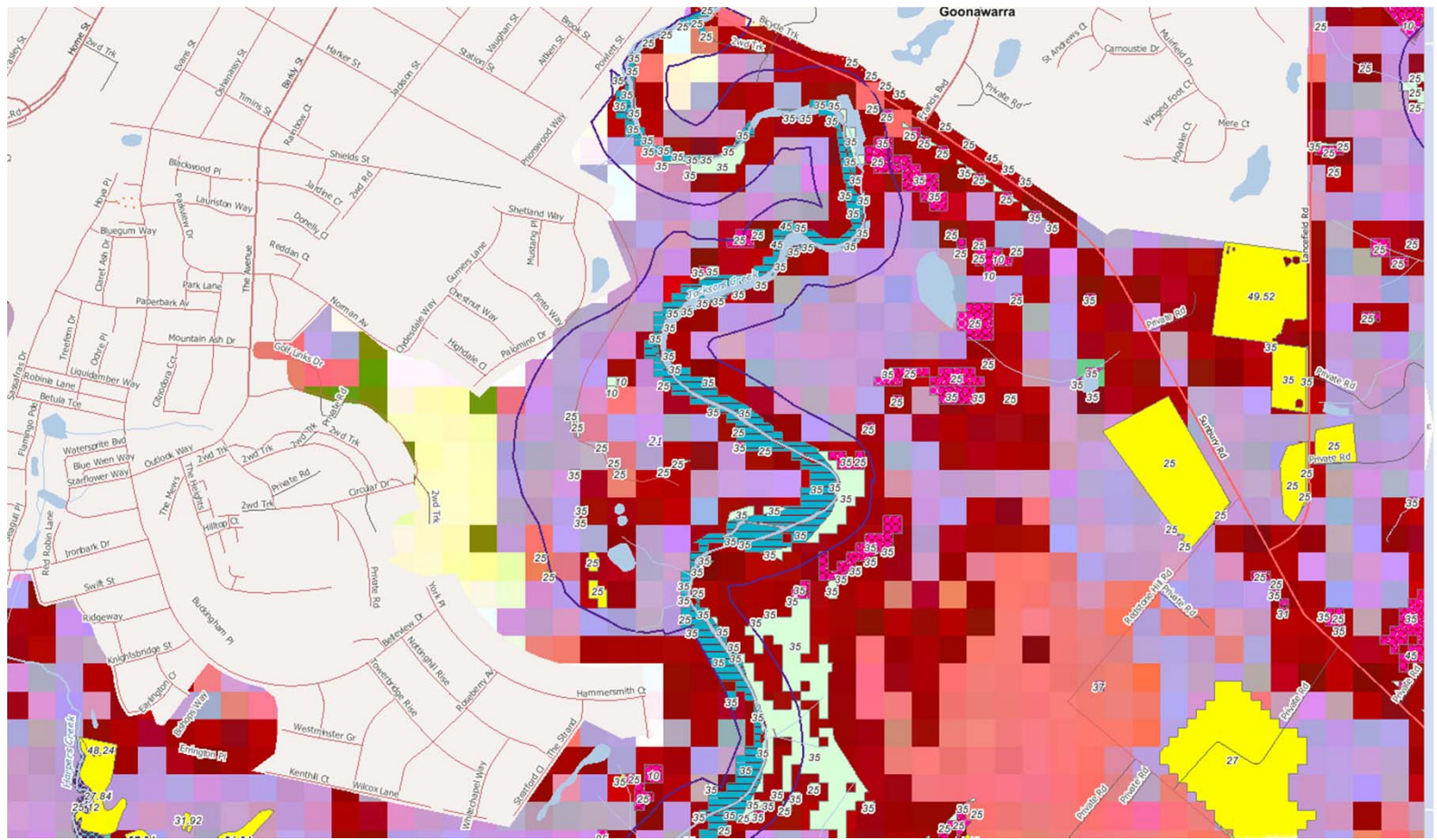
Biodiversity Mapping and related issues

Mark Bartley

15 July 2015







- Freeway
 - Highway
 - Main Road
 - Secondary Road
 - Local Road
 - 2WD (Unsealed)
 - 4WD Only
 - Walking or Cycle Track
 - WATERCOURSES
 - UNNAMED DRAINAGE LINES
 - Conservation Areas
 - Timestamped Native Vegetation - Growth Areas
-
- 104 Lignum Swamp
 - 124 Grey Clay Drainage-line Aggregate
 - 125 Plains Grassy Wetland
 - 132 Plains Grassland
 - 136 Sedge Wetland
 - 175 Grassy Woodland
 - 191 Riparian Scrub
 - 203 Stony Rises Woodland
 - 22 Grassy Dry Forest
 - 3 Damp Sands Herb-rich Woodland
 - 47 Valley Grassy Forest
 - 48 Heathy Woodland
 - 53 Swamp Scrub
 - 55 Plains Grassy Woodland
 - 56 Floodplain Riparian Woodland
 - 61 Box Ironbark Forest
 - 641 Riparian Woodland
 - 647 Plains Sedge Wetland
 - 649 Stony Knoll Shrubland
 - 64 Rocky Chenopod Woodland
 - 651 Plains Swampy Woodland
 - 653 Aquatic Hermland
 - 654 Creekline Tussock Grassland
 - 656 Brackish Wetland
 - 68 Creekline Grassy Woodland
 - 72 Granitic Hills Woodland
 - 793 Damp Heathy Woodland
 - 803 Plains Woodland
 - 821 Tall Marsh
 - 83 Swampy Riparian Woodland
 - 851 Stream Bank Shrubland
 - 895 Escarpment Shrubland
 - 937 Swampy Woodland
-
- WATERBODIES
 - Watercourse Area
 - Permanent Waterbody
 - Wetland Area
 - Inundation Area



Credit: Bill Boyle

Report

Welcome Guest | Home | Help | Logout

Select Area

Type: User Polygon

Click then Draw

Latitude	Longitude	Datum
-38.1138	145.3855	GDA94
-38.1138	145.3990	GDA94
-38.1232	145.3992	GDA94
-38.1232	145.3857	GDA94

Scale = 1 : 10K

145.40955701, -38.12340403

Viomap API © 2015 State Government of Victoria | Copyright and Disclaimer

MyMap

- Sensitive Sites
- Sites
- Grid Summary
- 1M Grid

Normal Satellite Hybrid

Common Filter

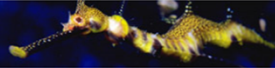
Advanced Filter

Search

Summary Alphabetical Systematic Rec Sheet

Search Reset

Species



Credit: Bill Boyle

Report ▾

Welcome Guest | Home | Help | Logout

Select Area

Type: User Polygon

Click then Draw

Latitude	Longitude	Datum
-38.1138	145.3855	GDA94
-38.1138	145.3990	GDA94
-38.1232	145.3992	GDA94
-38.1232	145.3857	GDA94

Common Filter

Scientific Name :

VBA Taxon ID :

Taxon Level : Species

Other Agency Codes : --- Select ---

Date Since : (dd/mm/yyyy)

Common Name : growling grass frog

Conservation Status : --- Select ---

Taxon Type : --- Select ---

Discipline : --- Select ---

Date To : (dd/mm/yyyy)

Advanced Filter

Search

Summary
 Alphabetical
 Systematic
 Rec Sheet

Search Reset

Species

Taxon ID	Scientific Name	Common Name	Victorian Advisory List	Discipline	Taxon Origin	Short Name	Count of Sightings
No records found. Please refine your search criteria.							

0 record(s) found.

Biodiversity Interactive Map - 3.2
powered by [MapShare](#)

File Layers Legend Find Query Select Filter Themes Help Login

Map Layers [Feedback](#)

- Vegetation
 - Native Vegetation Regulations 2013
 - Modelled Native Vegetation
 - Rainforest
 - Ecological Vegetation Classes
 - Modelled FFG Communities
 - Tree Cover
- Planning
 - Melbourne Strategic Assessment
 - Conservation Areas
 - Habitat Compensation obligation
 - Time stamped Native Vegetation
 - Planning Permits
- Biodiversity
 - Monitoring Sites
 - Habitat Models Grid Display
 - Habitat Fauna models Grid display
 - Habitat Flora models Grid display
 - NaturePrint v2.0 Strategic Natural Values
 - Threatened Flora Lifeforms
 - Threatened Fauna Classes
 - Amphibians
 - Grid Display
 - Points (lt 1000m accuracy)
 - Points (gt 1000m accuracy)
 - Birds
 - Mussels and Decopod Crustacea
 - Fish
 - Invertebrates
 - Mammals
 - Reptiles
 - Grid Display
 - Points (lt 1000m accuracy)
 - Points (gt 1000m accuracy)
- Wetlands
 - Ramsar Sites
 - Important Wetlands
 - Pre European Wetlands
 - 1994 Wetland Categories
 - Current Wetlands
- Marine and Coastal
- Disturbance
- Catchments
- Land Administration and Classification
- Map Base

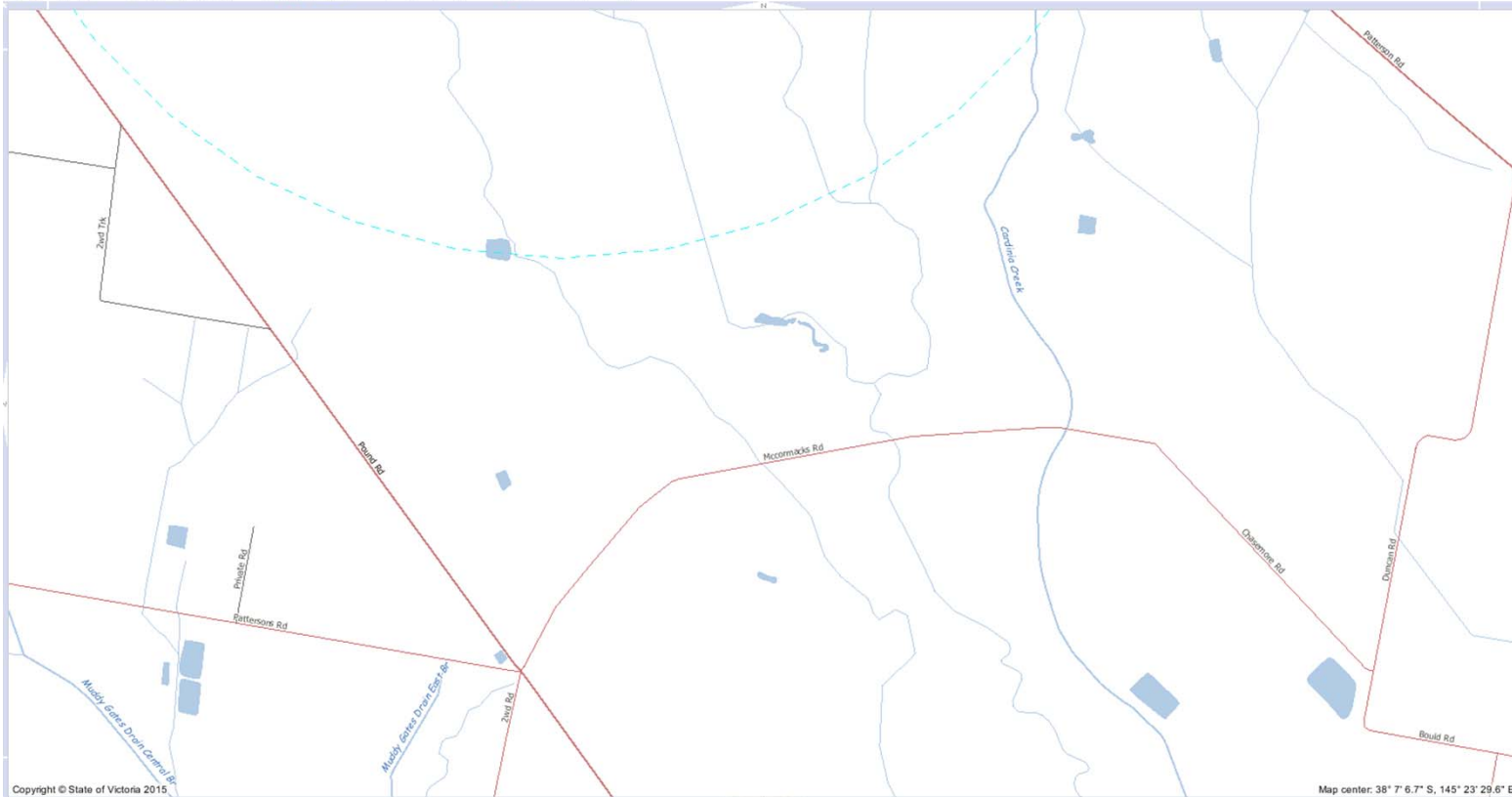
Refresh Map

Scale: 1:8,209 Go Quick View: Map Tool:

[Copyright](#) | [Privacy](#) | [Disclaimer](#) | [Contact Us](#)

Department of Environment, Land, Water & Planning

Identified area does not overlap subject land

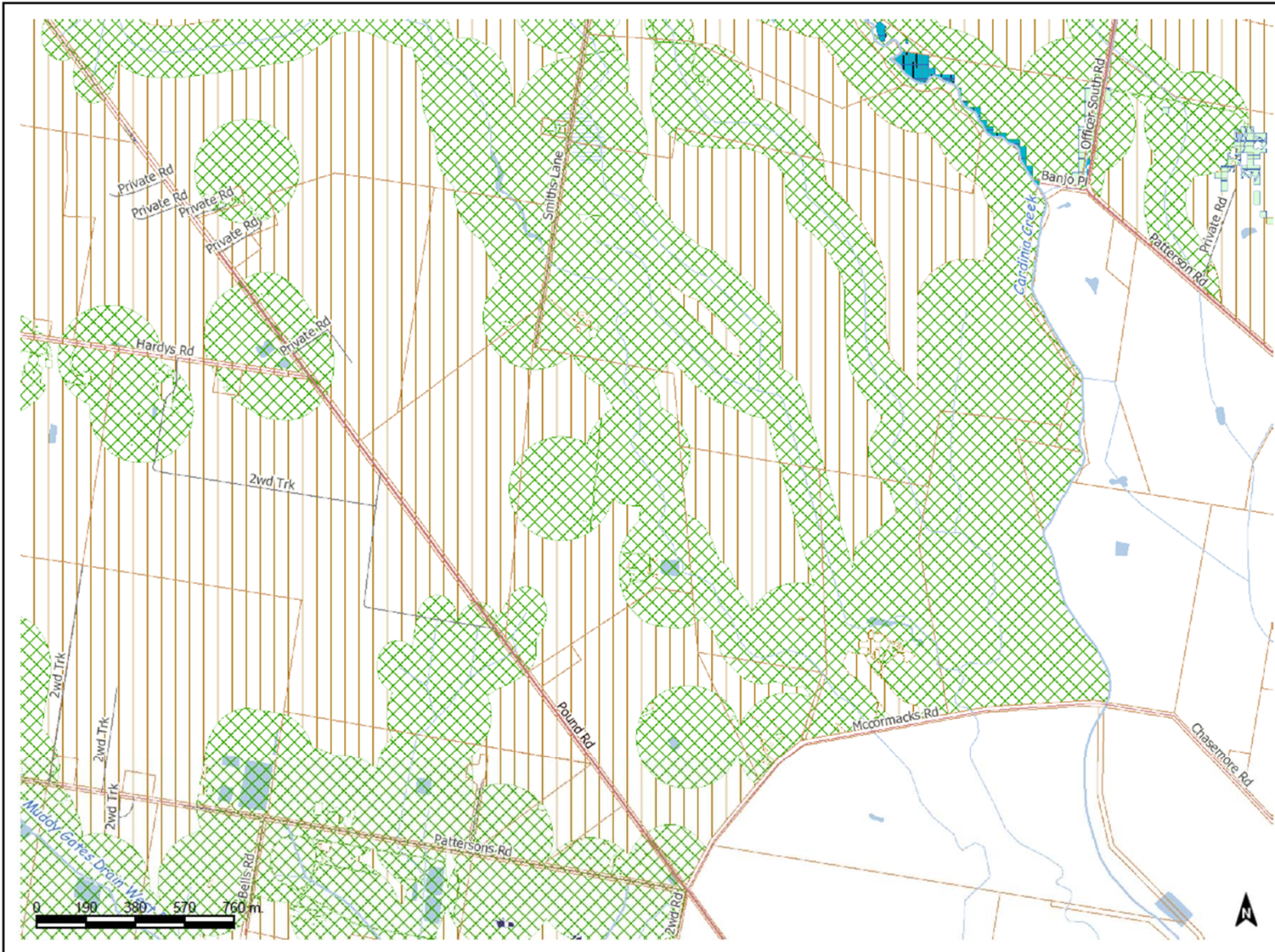


Taxon ID:	10498
Common Name:	Chestnut-rumped Heathwren
Taxon Type:	Passerine birds
RECORD_SRC:	Habitat Distribution Model (within Native Veg)
Taxon ID:	11008
Common Name:	Spot-tailed Quoll
Taxon Type:	Mammals
RECORD_SRC:	Habitat Distribution Model (within Native Veg)
Taxon ID:	10504
Common Name:	Speckled Warbler
Taxon Type:	Passerine birds
RECORD_SRC:	Habitat Distribution Model (within Native Veg)
Taxon ID:	10598
Common Name:	Painted Honeyeater
Taxon Type:	Passerine birds
RECORD_SRC:	Habitat Distribution Model (within Native Veg)
Taxon ID:	13207
Common Name:	Growling Grass Frog
Taxon Type:	Amphibians
RECORD_SRC:	Habitat Distribution Model (within Native Veg)
Taxon ID:	10216
Common Name:	Blue-billed Duck
Taxon Type:	Other Non-passerine birds
RECORD_SRC:	Habitat Distribution Model (within Native Veg)
Taxon ID:	10185
Common Name:	Little Egret
Taxon Type:	Other Non-passerine birds
RECORD_SRC:	Habitat Distribution Model (within Native Veg)
Taxon ID:	10253
Common Name:	Sooty Owl
Taxon Type:	Other Non-passerine birds
RECORD_SRC:	Habitat Distribution Model (within Native Veg)
Taxon ID:	11061
Common Name:	Common Dunnart
Taxon Type:	Mammals
RECORD_SRC:	Habitat Distribution Model (within Native Veg)
Habitat Flora models Grid display	
Taxon ID:	500835
Scientific Name:	Corybas aconitiflorus
Growth Form:	Forb
RECORD_SRC:	Habitat Distribution Model (within Native Veg)

Growling grass frog is located in identified area but not on subject land

Obligations can be mapped....

Map created Tue Jul 14 12:41:27 EST 2015



Department of
Environment, Land,
Water & Planning
State Government
Victoria



* Refer to page 2 for legend details

Disclaimer: This map is a snapshot generated from Victorian Government data. This material may be of assistance to you but the State of Victoria does not guarantee that the publication is without flaw of any kind or is wholly appropriate for your particular purposes and therefore disclaims all liability for error, loss or damage which may arise from reliance upon it. All persons accessing this information should make appropriate enquiries to assess the currency of the data.

Habitat Compensation Obligation and Time Stamped Native Vegetation switched on

Biodiversity Interactive Map - 3.2
powered by MapShare

File Layers Legend Find Query Select Filter Themes Help Login

Map Layers [Feedback](#)

- Vegetation
 - Native Vegetation Regulations 2013
 - Modelled Native Vegetation
 - Rainforest
 - Ecological Vegetation Classes
 - Modelled FFG Communities
 - Tree Cover
- Planning
 - Melbourne Strategic Assessment
 - Conservation Areas
 - Habitat Compensation obligation
 - Time stamped Native Vegetation
 - Planning Permits
- Biodiversity
 - Monitoring Sites
 - Habitat Models Grid Display
 - NaturePrint v2.0 Strategic Natural Values
- Threatened Flora Lifeforms
- Threatened Fauna Classes
- Wetlands
- Marine and Coastal
- Disturbance
- Catchments
- Land Administration and Classification
- Map Base

Refresh Map

Automatically Refresh Map

Notes:
Please refer to the following for descriptions of the functions of the controls in the layer list above.

- Click folder to show or hide contents.
- Click to turn on all layers in the associated folder.
- Click to turn off all layers in the associated folder.
- Click the check box to turn layer on and off.
- This is the active identify layer.
- Click to make the layer be the active identify layer.

Scale: 1:4,821 Quick View: Map Tool:

[Copyright](#) | [Privacy](#) | [Disclaimer](#) | [Contact Us](#)

But - tabulated obligations report request results in error message

The screenshot shows a web browser window with the URL <http://nvim.depi.vic.gov.au/BCS/Obligations/#/>. The page displays a map interface with a search result for "95 MCCORMACKS RD, CLYDE NORTH VIC 3978". The map shows several parcels outlined in red, with a blue outline indicating a Biodiversity Conservation Strategy (BCS) area. A location pin is placed on the map, and a tooltip message reads: "Outside of BCS area. The location on the map is outside of the Biodiversity Conservation Strategy area. Options: Use the search box or map to navigate to the Biodiversity Conservation Strategy area. If you wish to determine offset obligations at this location, please contact DEPI".

Search result:
95 MCCORMACKS RD, CLYDE NORTH VIC 3978

Select parcels

Select parcels on the map to view obligations.
More than one parcel can be selected.
There may be more than one parcel associated with an address.

Outside of BCS area

The location on the map is outside of the Biodiversity Conservation Strategy area.

Options:

- Use the search box or map to navigate to the Biodiversity Conservation Strategy area
- If you wish to determine offset obligations at this location, please contact DEPI

Native vegetation permitted clearing regulations

ETANZ Victoria
Melbourne Strategic Assessment seminar reminder
View this email in your browser
<<http://us9.campaign-archive2.com/?u=c4a91372e9a612>>

1:19 PM
14/07/2015

