

**RESPECTING RIVER RED GUMS:
USING TREES IN PLACE
CREATION ON THE URBAN EDGE**



**River Red Gums
are the signature
tree and key
defining feature
of the City of
Whittlesea**

CITY OF WHITTLESEA

Located 20 km north of Melbourne's CBD

Area: 490 square kilometres

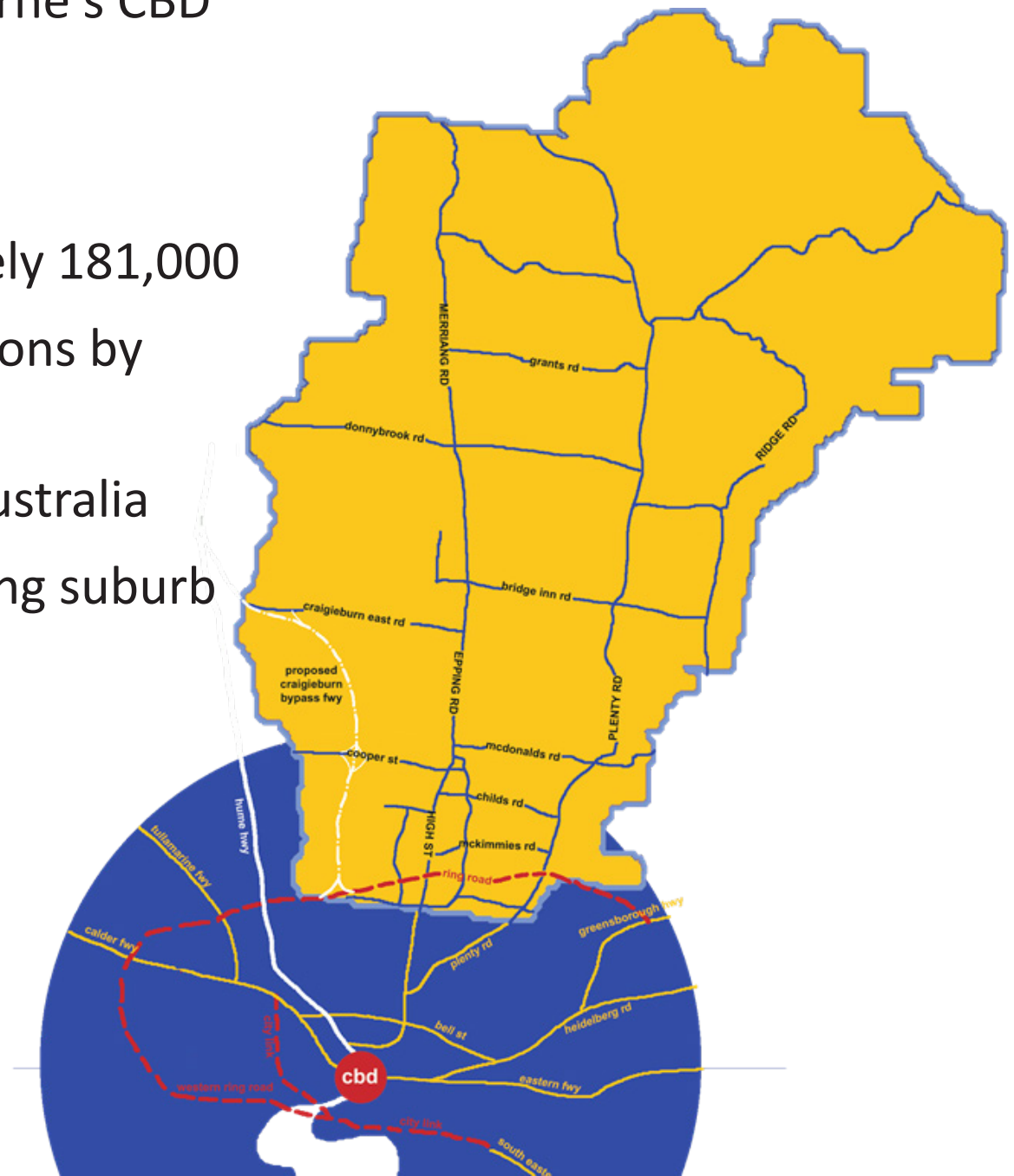
70% rural, 30% urban

Current Population approximately 181,000

Expected growth - 300,000 persons by 2030

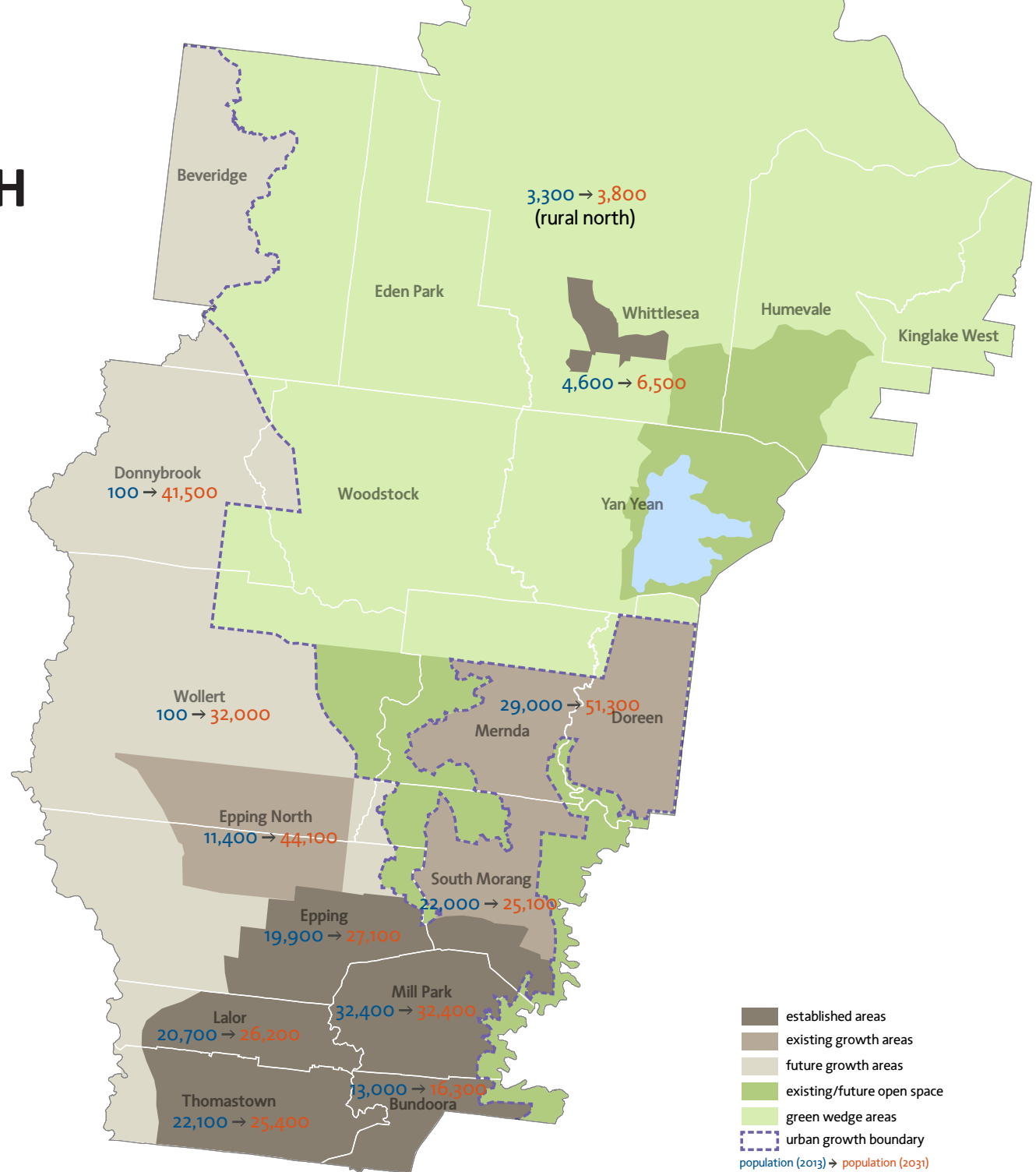
Second largest growth LGA in Australia

South Morang the fastest growing suburb in the nation

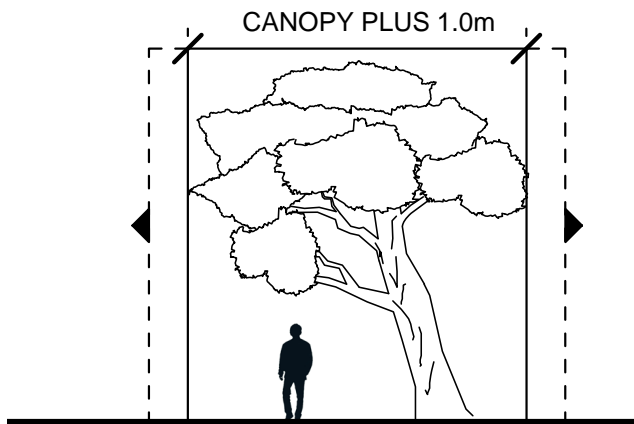
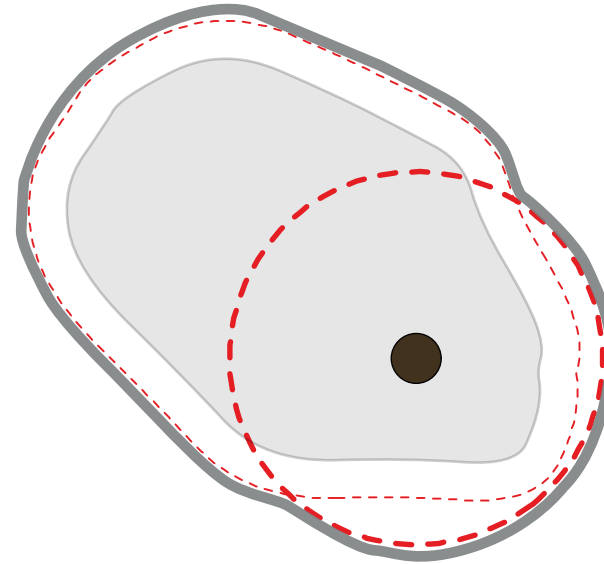


KEY CHALLENGE

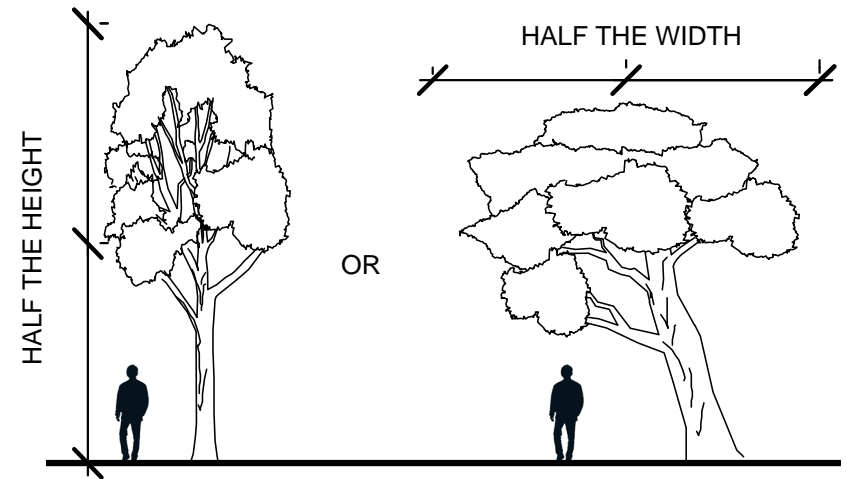
POPULATION GROWTH



CITY OF WHITTLESEA RIVER RED GUM POLICY TREE PROTECTION ZONE



CANOPY CALCULATION =
VERTICAL OUTLINE OF CROWN PLUS 1.0 METRE

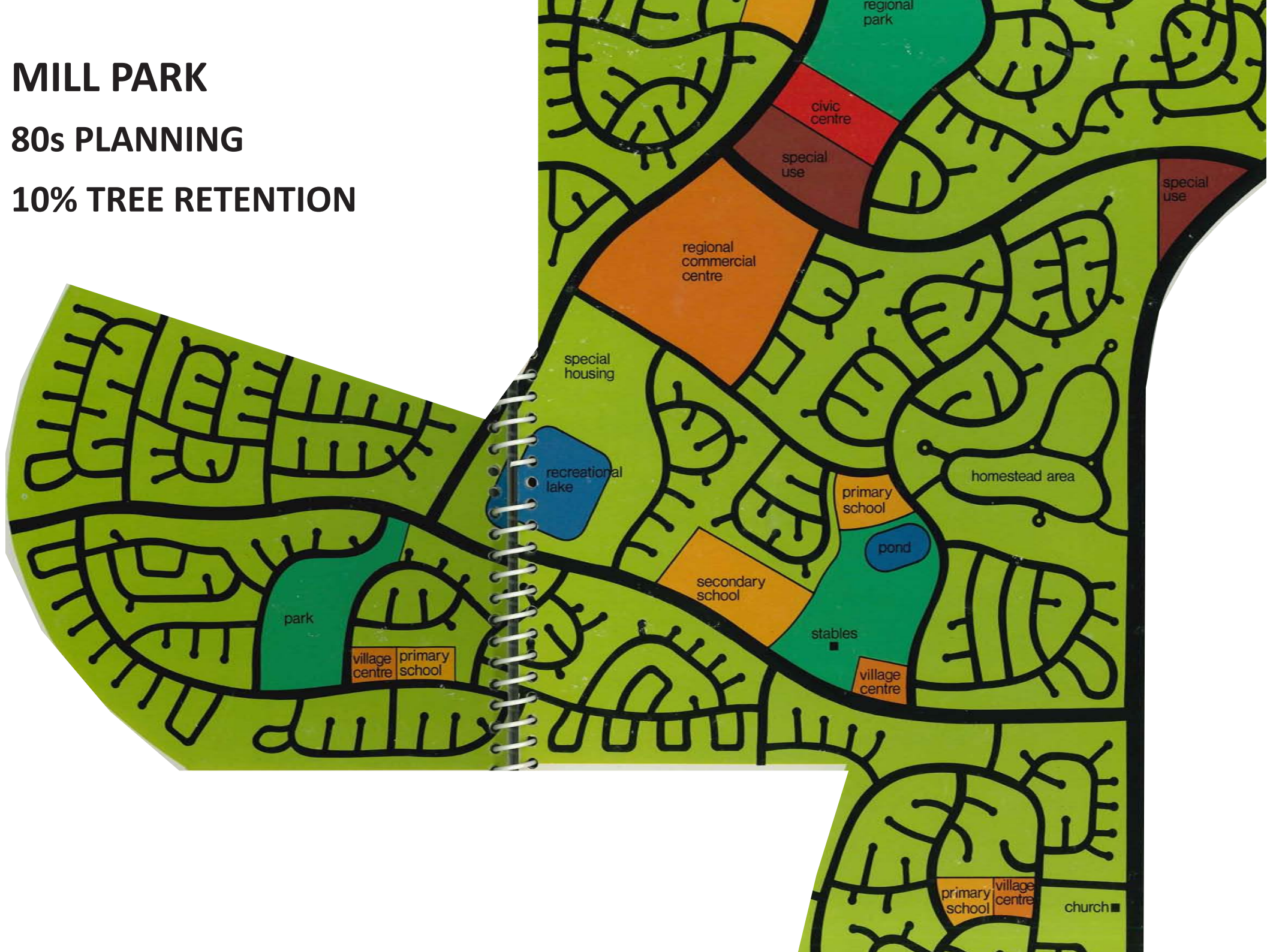


RADIUS CALCULATION =
HALF THE HEIGHT OR HALF THE WIDTH
(WHICH EVER IS GREATER).

MILL PARK

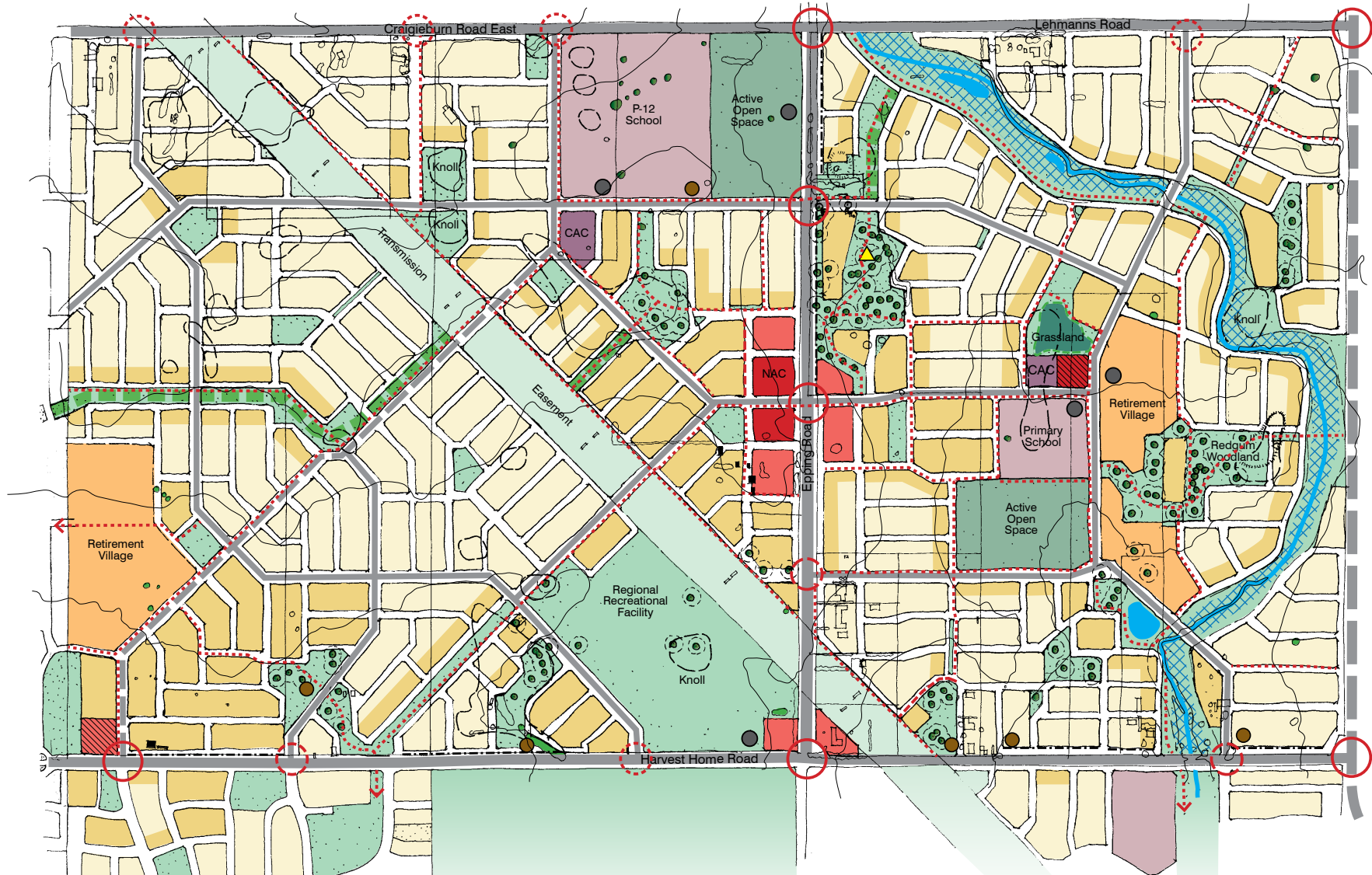
80s PLANNING

10% TREE RETENTION



EPPING NORTH EAST DEVELOPMENT PLAN

2000s PLANNING 80% TREE RETENTION



**ARBORICULTURAL
VALUE**



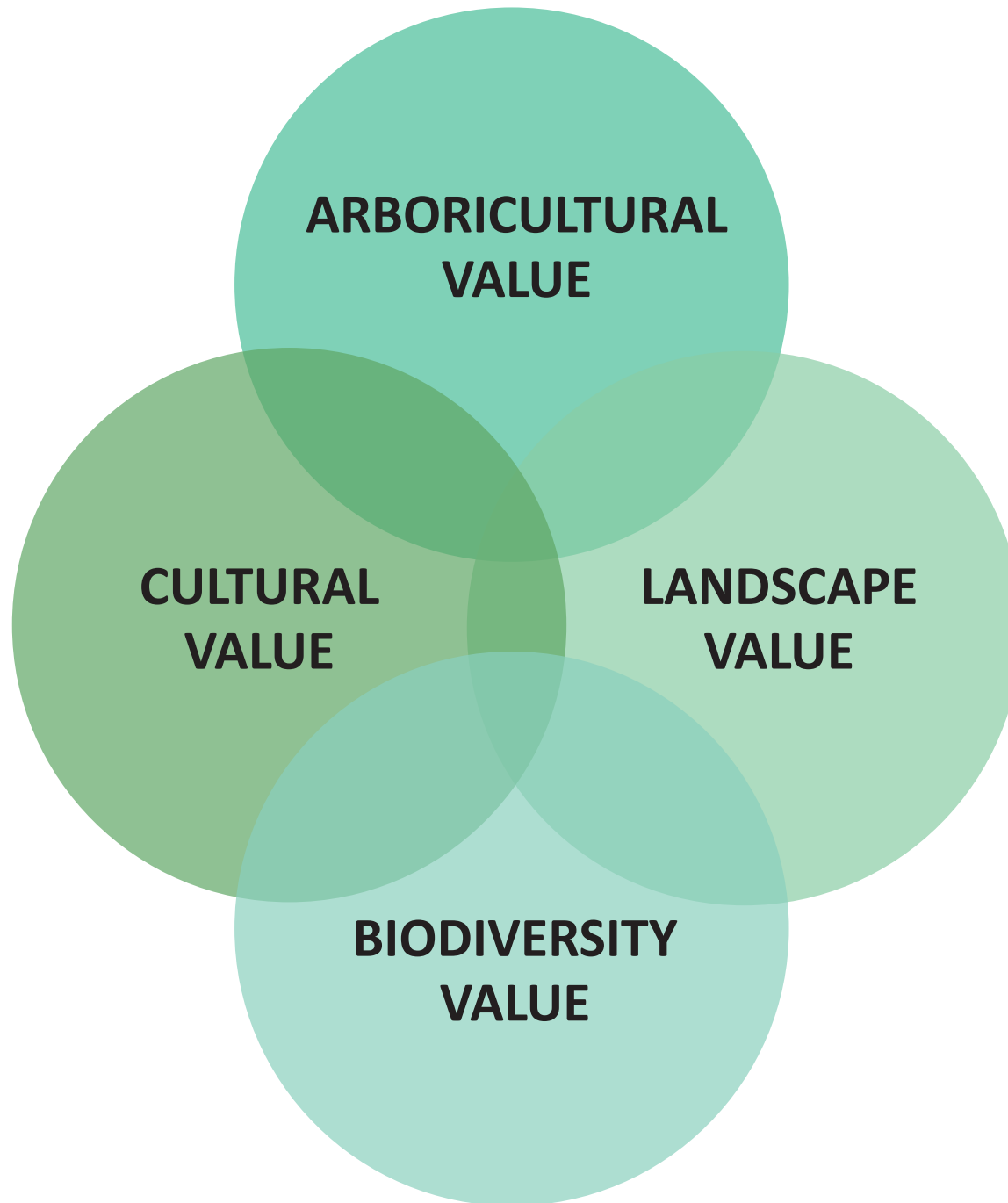
**LANDSCAPE
VALUE**



**BIODIVERSITY
VALUE**



**CULTURAL
VALUE**



CITY OF WHITTLESEA | CURRENT APPROACH



Maximise retention of vegetation



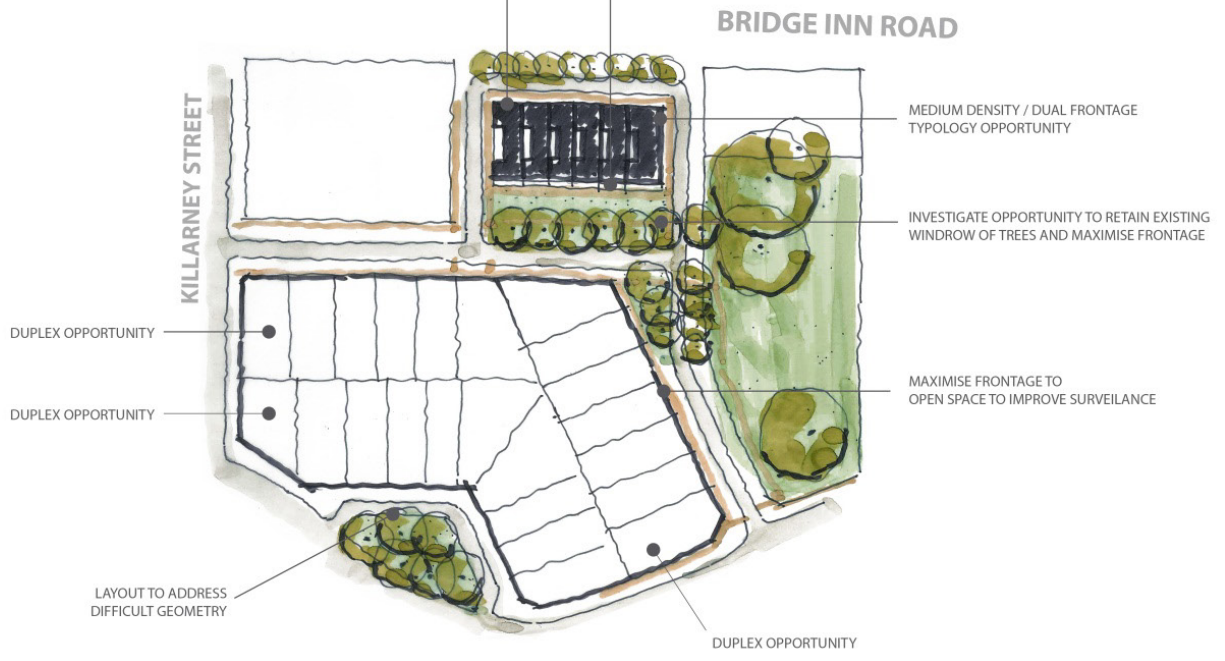
Conservation reserves as part of an integrated open space network



Encourage community connection to biodiversity



Use existing vegetation as a place making tool



850-860 BRIDGE INN ROAD
INDICATIVE CONCEPT

EPPING NORTH CONSERVATION RESERVE

Size: 14 ha

Key features:

- large stand of River Red Gums
- several stony rises
- dry stone walls
- townhouses fronting reserve
- path network through reserve





FORTRESS PARK, DOREEN

Size: Park - 3.7 ha

Key features:

- scattered River Red Gums
- playgrounds
- houses fronting park
- River Red Gums as landmark features in passive open space



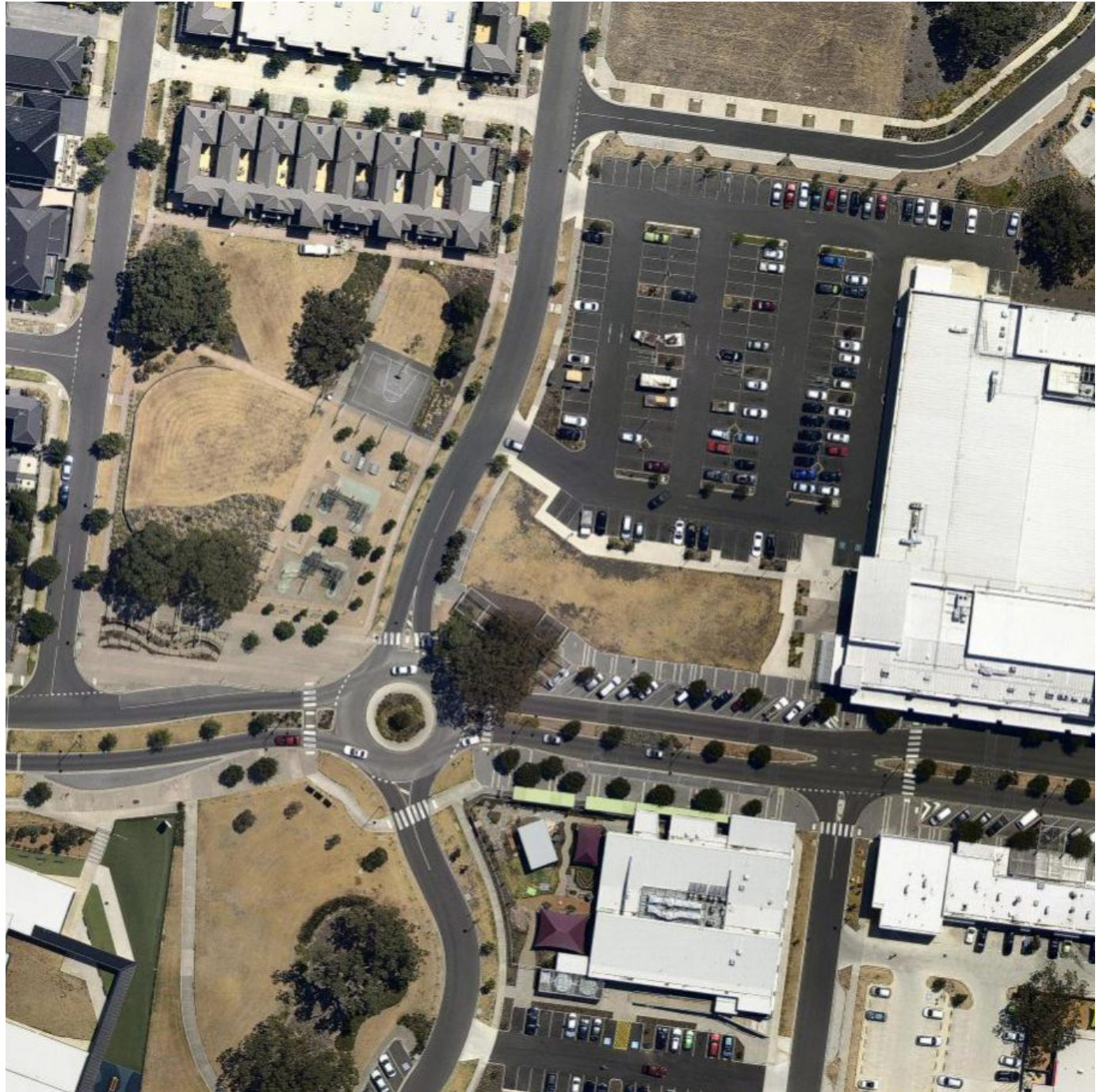


LYNDARUM TOWN CENTRE, EPPING

Size: Park - 6,000 m²

Key features:

- scattered River Red Gums
- playground
- town centre context
- townhouses fronting reserve





WOLLERT PRECINCT STRUCTURE PLAN

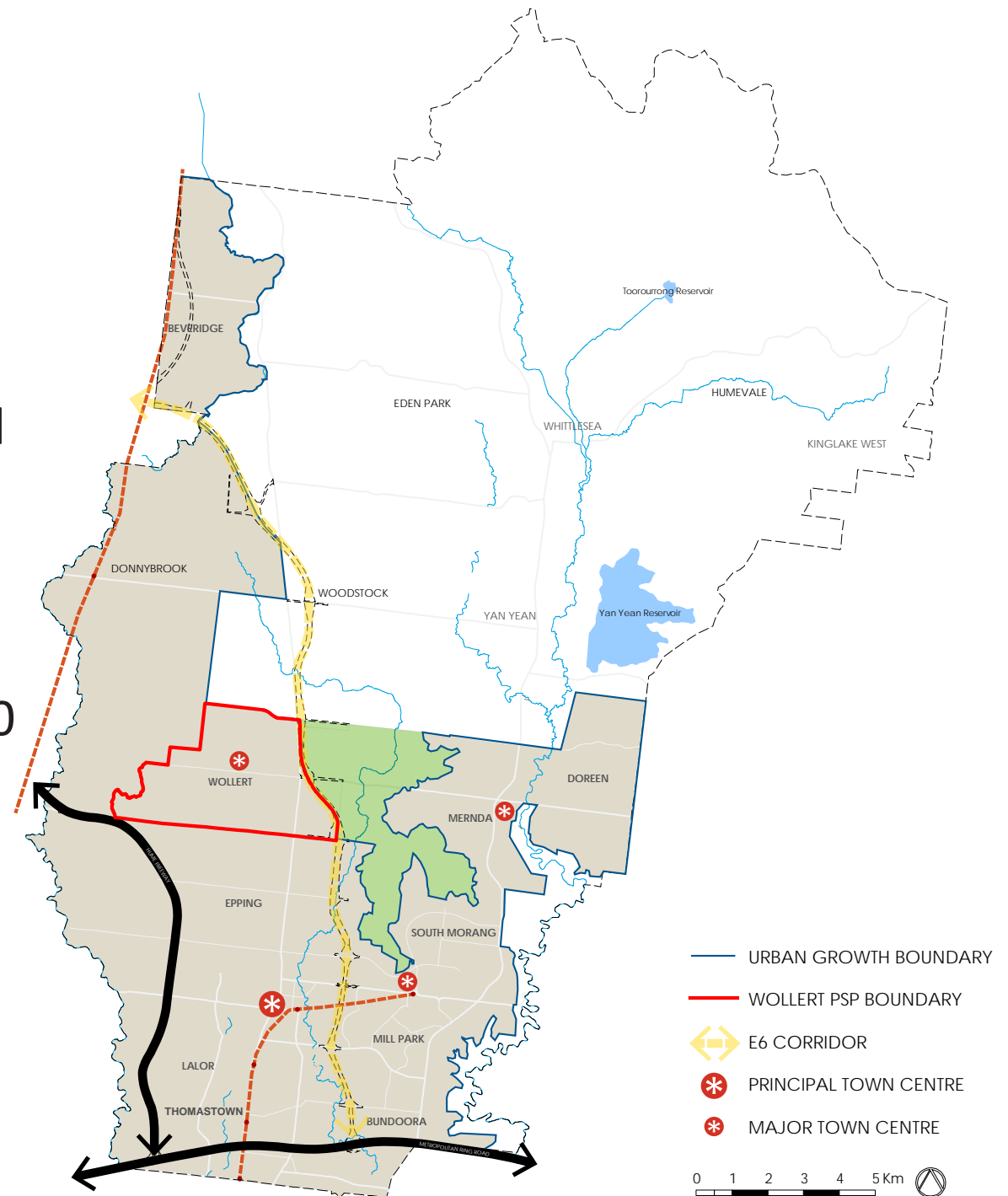
- 1400 hectares

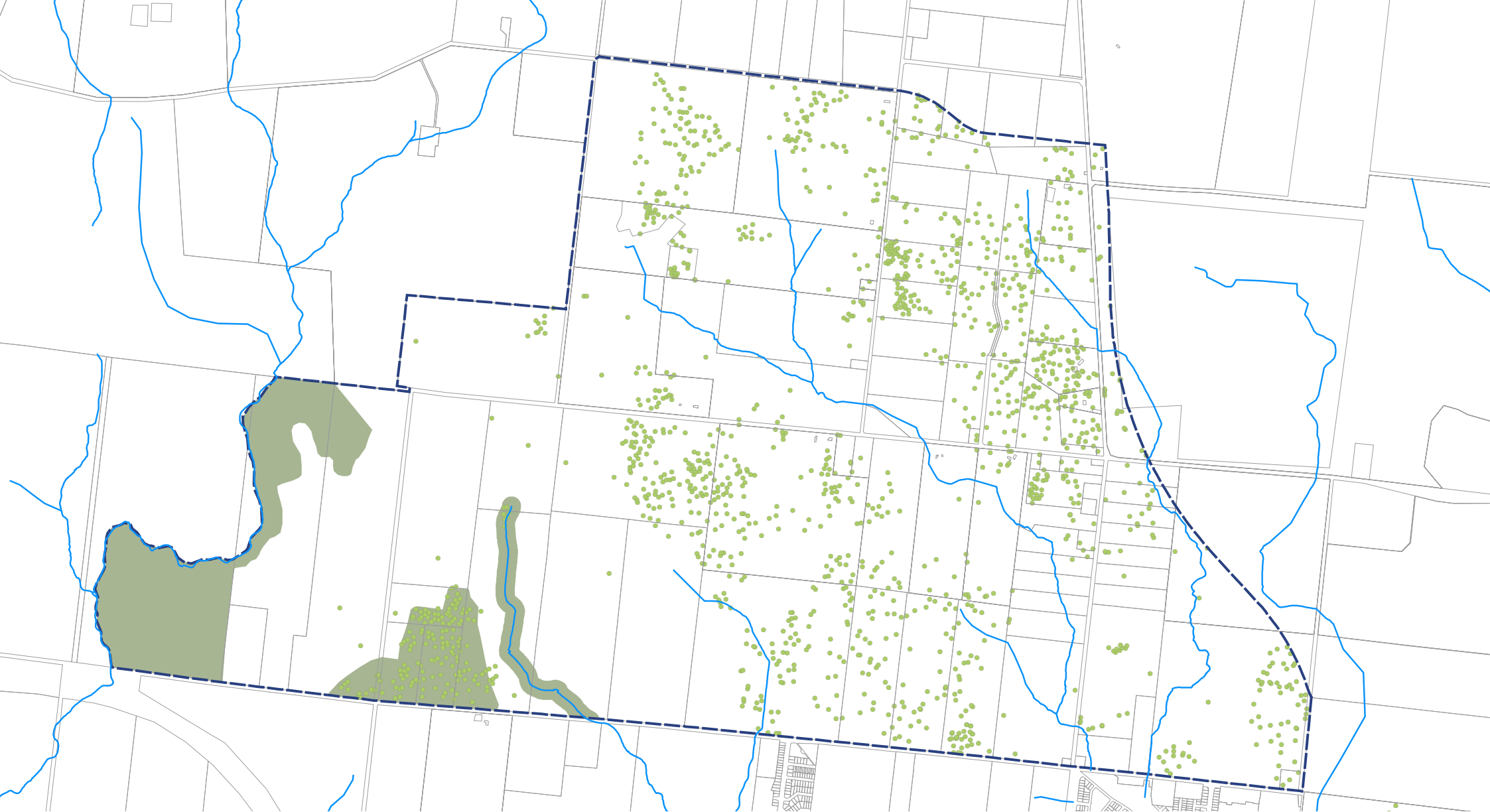
Currently

- Agricultural and rural-residential
- Population 100 residents

Precinct Structure Plan

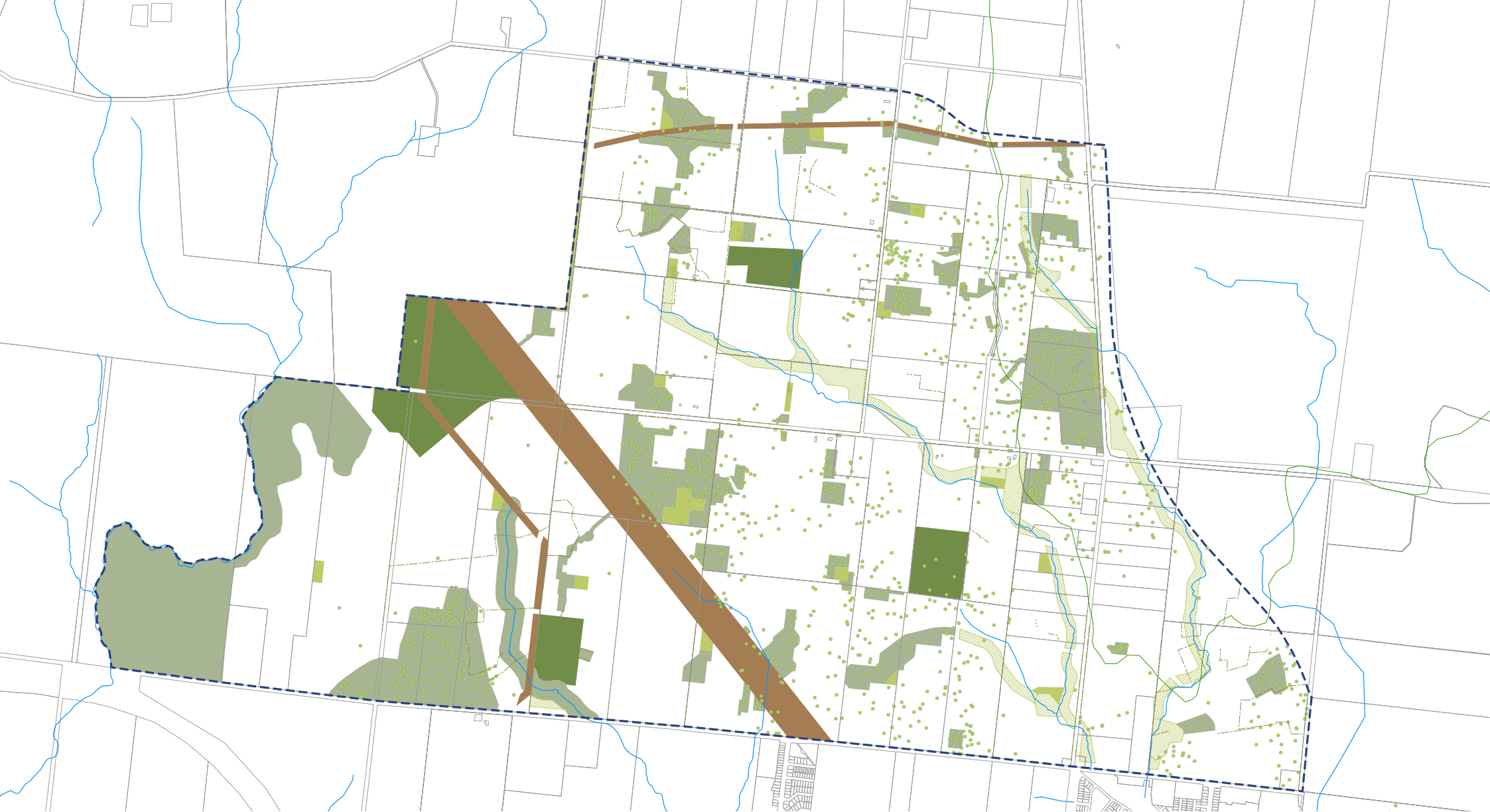
- Residential community of 25,000 - 40,000 people
- A major town centre, two smaller neighbourhood centres, an employment precinct, schools, community centres and passive and active open space





BCS PLAN

**Protects 155 trees of the 3000 River Red Gums
in conservation reserves**



CITY OF WHITTLESEA PLAN

**River Red Gums protected in conservation reserves,
other open space and as scattered trees**