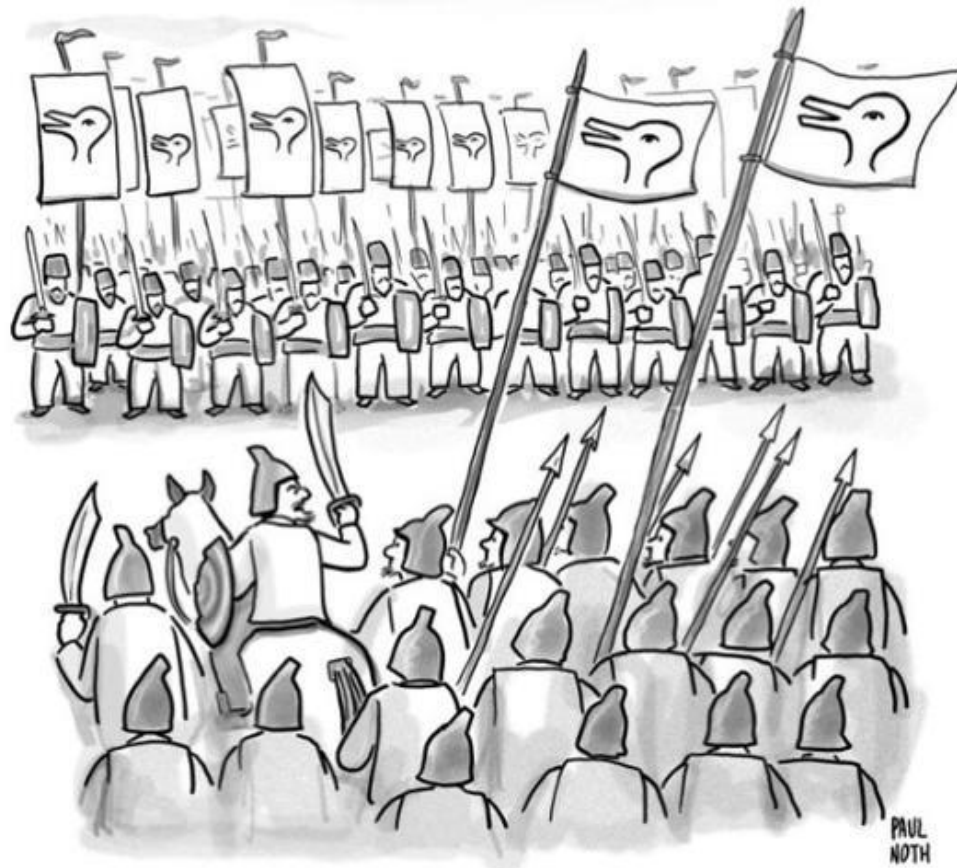


Schmidt's utopia – can environmental history help us find it?





“There can be no peace until they renounce their Rabbit God and accept our Duck God.”



Ashhurst wetland – a wetland with an interesting backstory

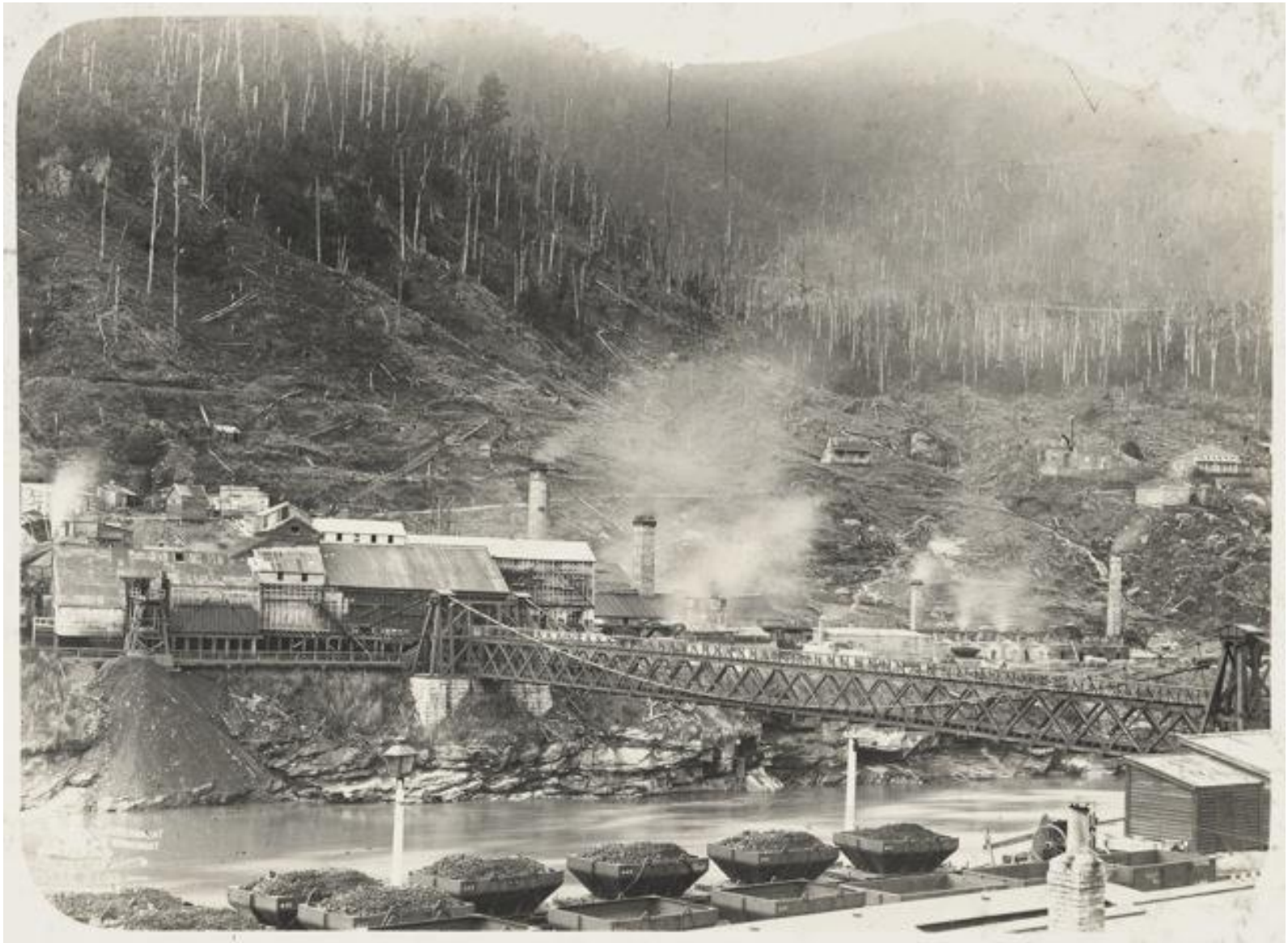


Farmhouse on land cleared by fire, circa 1905.



Carving depicting a weka.

Photo: Raewyn Peart



The coal-mining town of Brunner, on the banks of the Grey River. Photo by the Tourist Department. Date unknown.



The PGG building after the February 2011 earthquake. The Avon River is in the background.



Edward Jollie's 1850 plan of central Christchurch.



One of the pump stations on the Avon River. Note earthquake damage.



Cathedral of the Blessed Sacrament

Photo: catspyjamasnz



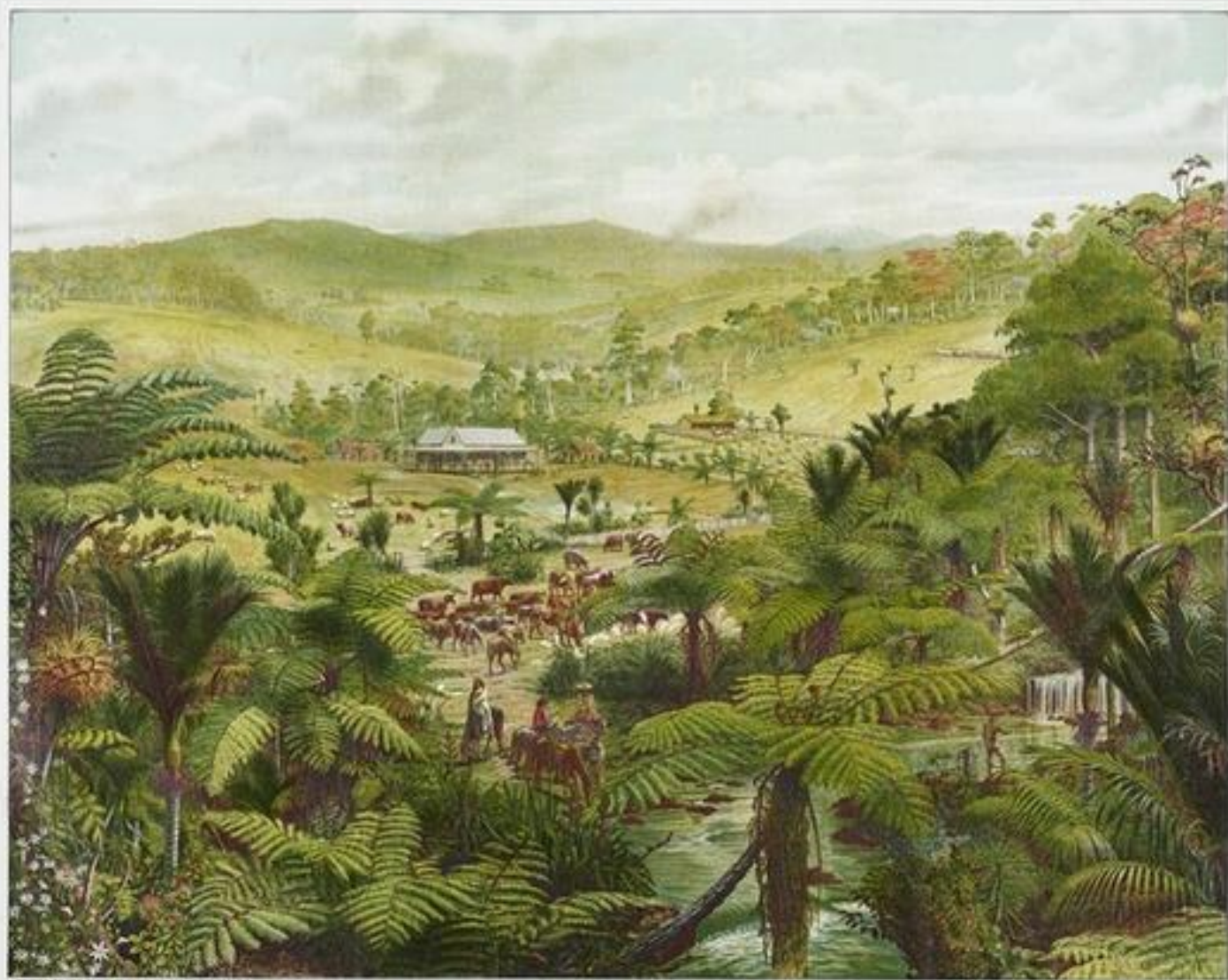
A farmhouse on the Manawatu River floodplain, after a flood in 1953.



Awapuni Lagoon 1881. European settlers paddle in a Maori canoe (waka). The old wharepuni (principal house of a village) is a vestige of the Awapuni village.



Awapuni 'lagoon' today



◉ A SETTLER'S HOME ◉
North Island, New Zealand.

www.envirohistorynz.com

