



Climate Change Forum

May 2017

Fin Robertson / Kate Rowan

Level Crossing Removal Authority



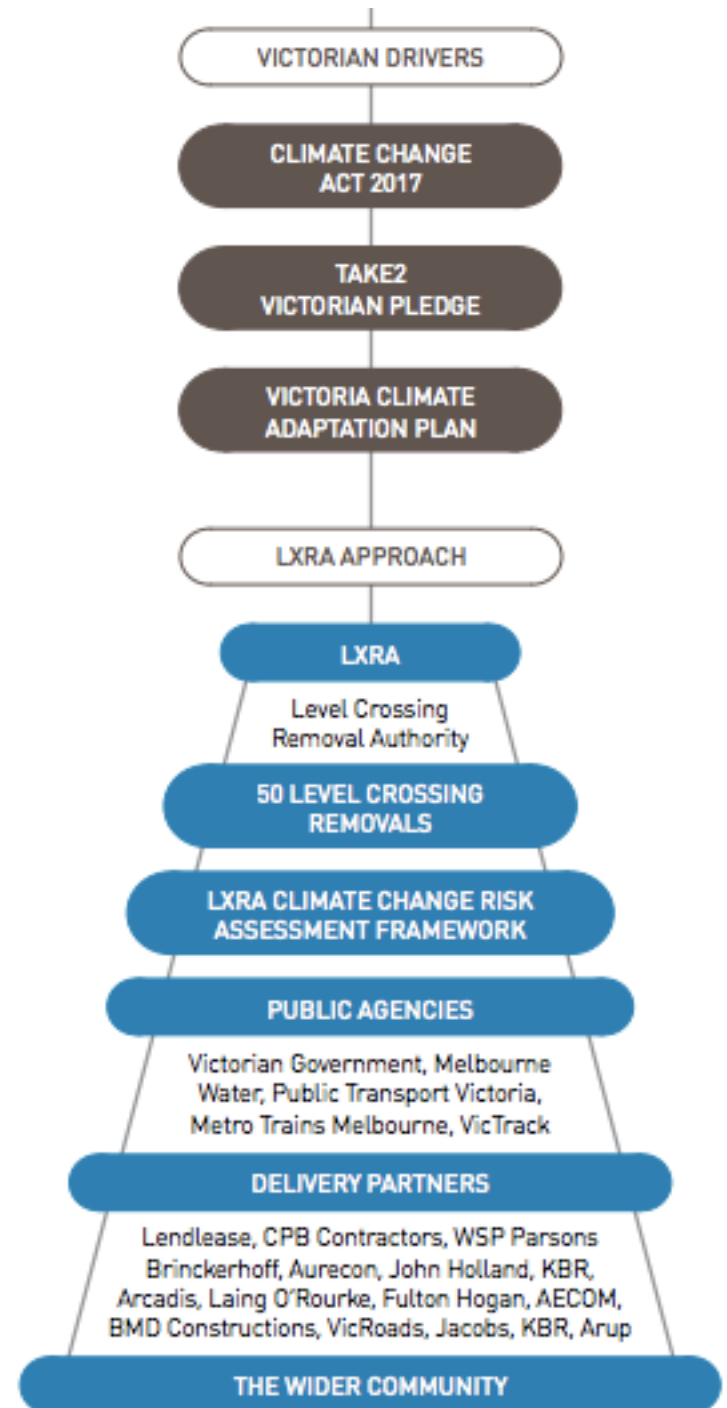


Level Crossing Removal Program

- 50+ Level Crossings
- Mernda Rail Extension
- Hurstbridge Rail Duplication
- Urban Renewal

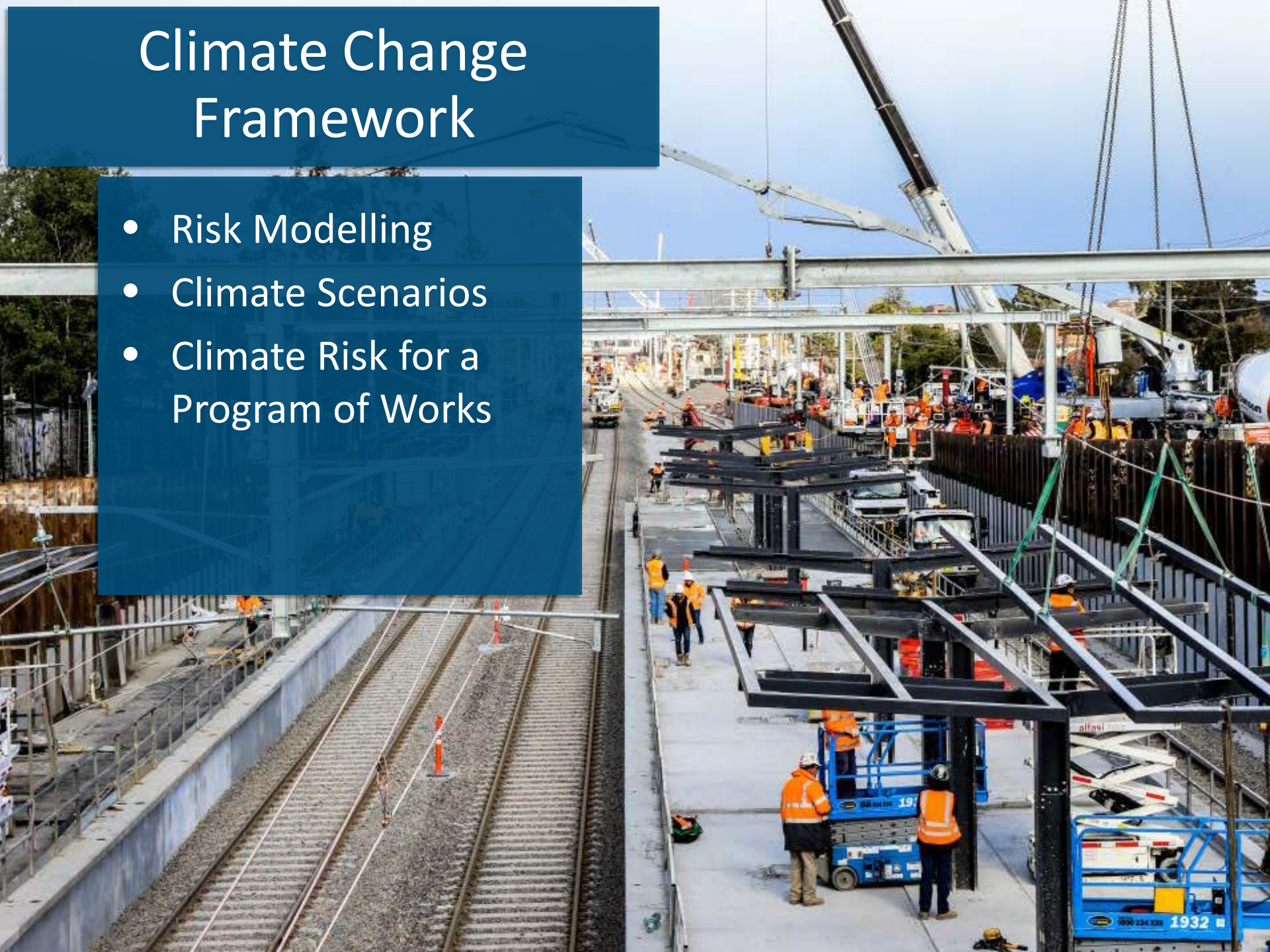
Climate Policy Context

Our Sustainability Vision is to achieve excellent environmental, social and economic outcomes across all phases of the Level Crossing Removal Project (Project) in order to deliver an integrated Project that connects the community in an environmentally sustainable manner.



Climate Change Framework

- Risk Modelling
- Climate Scenarios
- Climate Risk for a Program of Works



Project Delivery

- Procurement
- Delivery
- Knowledge Sharing
...Practical Outputs



Lessons Learned

- Approach: Project Level Risk Assessment and Delivery
- Design Conflicts
- Understanding Risk
- BUT..... 8 year program of works, which means learning and applying as we go for continual improvement



Climate Change Adaptation into Practice

- Rail Design –
Bayswater LXR

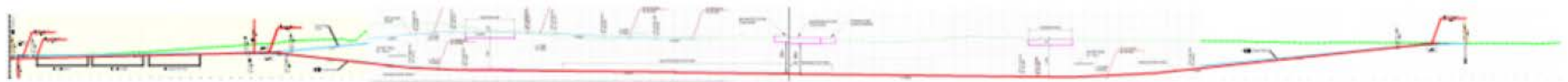


Figure 2: Reference track alignment cross-section

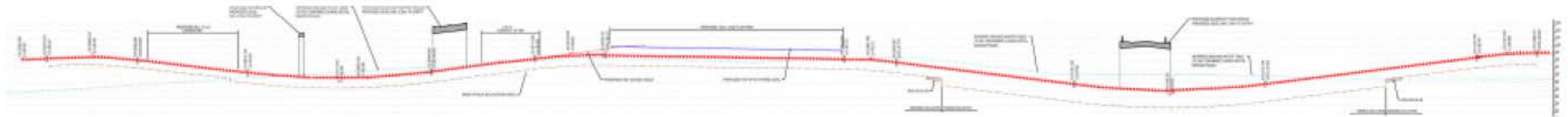


Figure 3: Proposed track alignment cross-section

Climate Change Adaptation into Practice

- Station Design –
Solar Panels at
Heatherdale Station





Fin Robertson / Kate Rowan

Level Crossing Removal Authority

