



# ENVIRONMENTAL PLANNING TOOL

An easy to use platform for accessing, creating and sharing mapping data to inform land use planning and natural area management

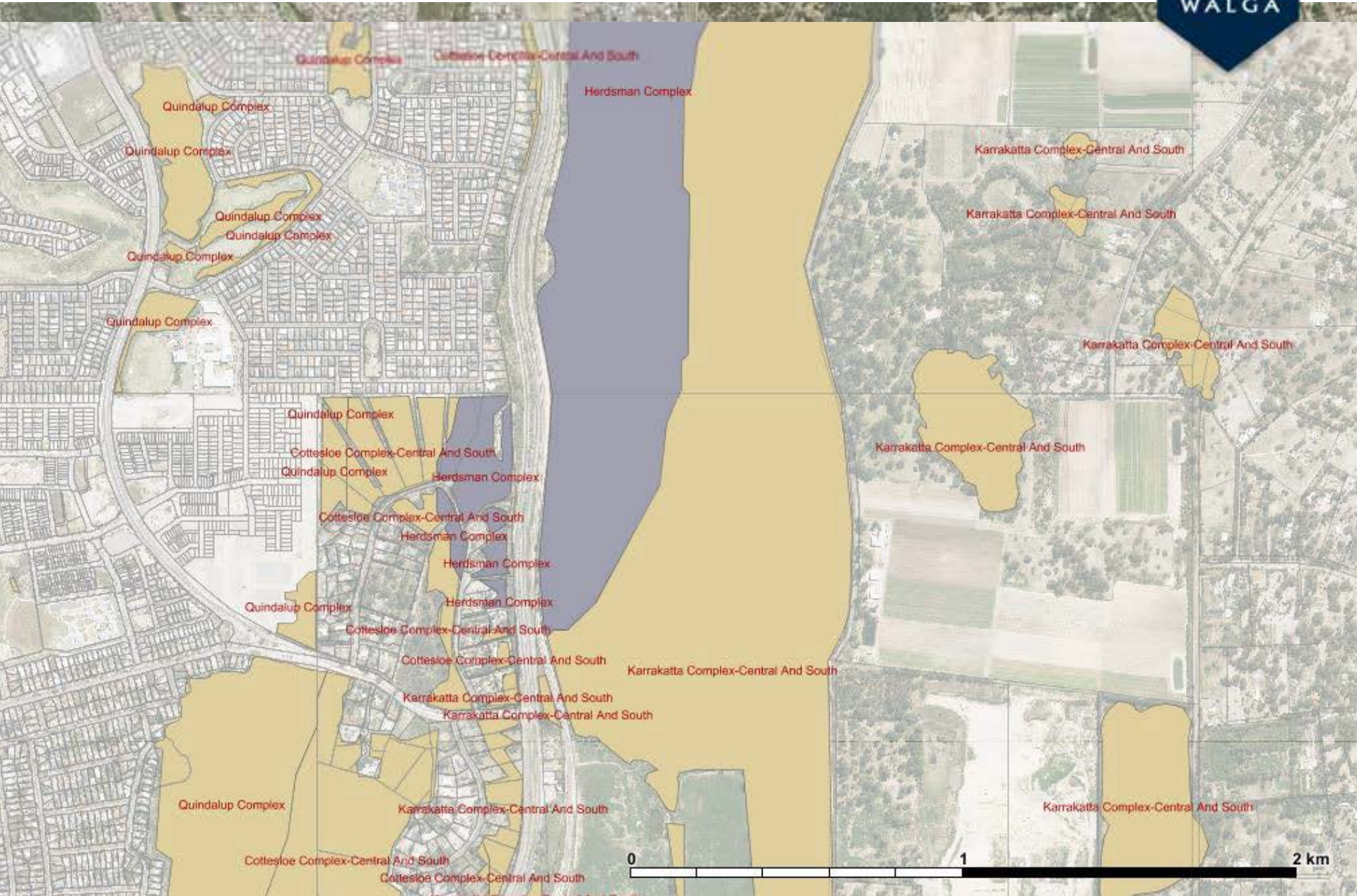
---

Renata Zelinova  
Business Development Officer  
(Environmental Planning Tool)

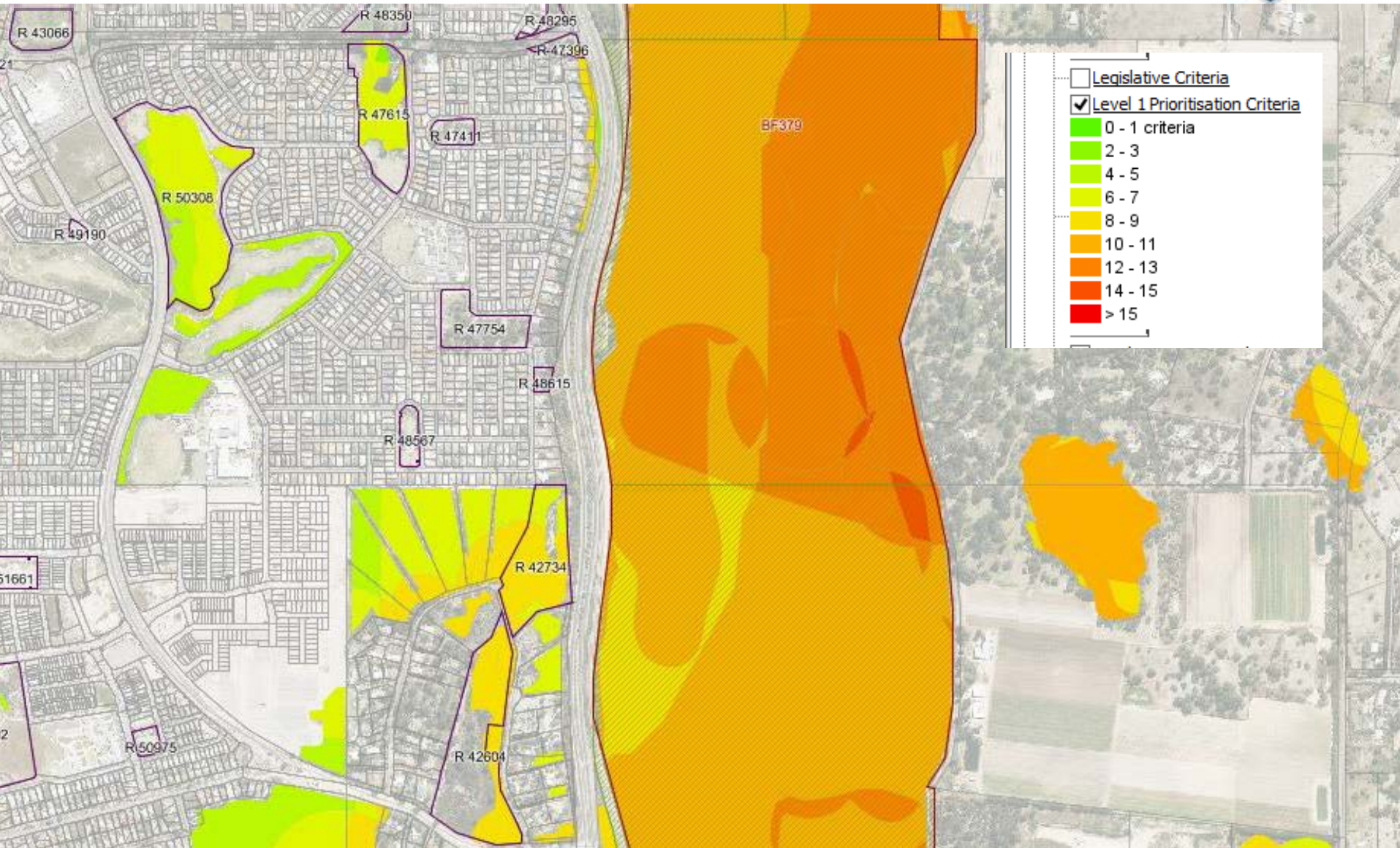
26 May 2017













# Overview

---

- Introducing the Environmental Planning Tool
- What information is available?
- What can it be used for?
- How its use improves environmental practice in Local Government?

# Key features

- Over 300 data layers with an interpretation guide
- Unique reporting functions
- No specialist software required
- Functions to allow simple calculations, measuring, mapping and communication with stakeholders





# Available data

- Location/Topographical features
- Environmental Considerations
- Natural Areas with Some Levels of Protection
- Priorities for Further Investigations
- Additional Considerations
- Land Use
- Local Government Specific Information
- Administrative boundaries
- Climate
- Census 2011



# Interpreted data



Environment Planning | Selected Features | Copy to Clipboard

Explanatory Notes | lbp.asn.au/en.htm#b6a1a3

the relative connectivity/quality of remnant vegetation (level 1 prioritisation criteria).

When using this layer, please remember that the criteria used in the Regional Framework is limited to biodiversity characteristics supported by spatial datasets covering the entire study area. Some datasets used in the Regional Framework act as surrogates for natural area characteristics and do not necessarily represent an exact location of that particular feature. The questions should be compared to control the results of this desktop study.

The spatial model for level 1 prioritisation was built using original datasets and specifically created datasets. Take a look the datasets used to build the model (including brief descriptions, data availability and currency).

Note 4: List of datasets used in level 1 prioritisation

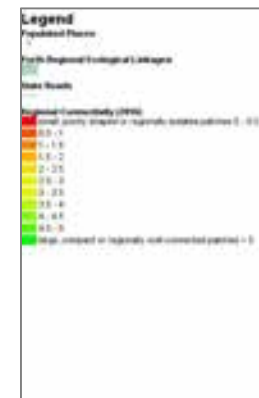
Key to Criteria	Dataset	Description	Data Custodian	Currency	Link to Metadata
P1_1	DPHW Managed Lands and Values	Used to identify national parks, nature reserves, conservation parks, Section 9 (1) (g) reserves.	Department of Parks and Wildlife	2011	<a href="#">See Metadata of Dataset 1</a>
	Regional Parks	Includes all Regional Parks	Department of Parks and Wildlife	2010	<a href="#">See Metadata of Dataset 1</a>
	State Forests	Includes all State Forests sites in the Perth Intercoastal Region	Department of Planning	2011	<a href="#">See Metadata of Dataset 1</a>
	Crown reserves	Crown reserves listed for conservation	Landgate		
	Great Barrier Reef State Regionally Significant Natural Areas	Free Regionally Significant Natural Areas	Office of Environmental Protection Authority	2010	<a href="#">See Metadata of Dataset 1</a>
	Forest Management Plan 2014-2021	Used to identify areas defined as Forest Mosaic Zones and Internal Reserves	Department of Parks and Wildlife	2013	<a href="#">See Metadata of Dataset 1</a>
	Marine outcrops	Identified outcrops recognised under the international agreement	Department of Parks and Wildlife	2005	<a href="#">See Metadata of Dataset 1</a>
	DPHW conservation covenants	Identified properties with conservation covenants of the	Department of Parks and Wildlife	2011	<a href="#">See Metadata of Dataset 1</a>
	Directory of Important Wetlands	Wetland wetlands listed in a Directory of Important Wetlands in Australia (Aug 2011)	Kailij	2002	
P1_2 to P1_5, P1_6, P1_7, P1_8, P1_9	2011 remnant vegetation extent by vegetation communities	Multi up-to-date remnant vegetation extent by vegetation communities, including plantations	Local Biodiversity Program	2011	
P1_10	RAPEC 1 Sub-regions	Interim Regional Ecosystem Regeneration for Australia (IRERA) v1.1 regions represents a landscape level approach to classifying the land surface	Department of Sustainability, Environment, Water, Population and Communities	2011	<a href="#">See Metadata of Dataset 1</a>
	RAPEC 1.0.4a	Local Government boundaries within the RAPEC study area boundary, used to calculate the local level of remnant vegetation retention	Landgate	2011	
P1_3 and P1_4	Threatened and Priority Flora	Contains records of threatened and priority flora sub-set	Department of Parks and Wildlife	2014	<a href="#">See Metadata of Dataset 1</a>
P1_7 and P1_8	Threatened and Priority Fauna	Contains records of threatened and priority fauna sub-set	Department of Parks and Wildlife	2014	<a href="#">See Metadata of Dataset 1</a>
P1_2 & P1_4	Threatened and Priority Communities	Contains records of threatened and priority ecological communities sub-set	Department of Parks and Wildlife	2014	<a href="#">See Metadata of Dataset 1</a>
P1_9	Carriago's State Coonard Habitat	Includes four state areas, including areas requiring investigation as Carriago's Habitat on the Swan Coastal Plain and in the Jarrah Forest, known nesting sites and known breeding sites.	Department of Parks and Wildlife	2011	<a href="#">See Metadata of Dataset 1</a>
	Western Swallow Yarnheer Critical Habitat Policy Area	Western Swallow Yarnheer Critical Habitat Policy Area as described in Schedule 2 of the Environmental Protection (Design Swallow Yarnheer Critical Habitat Policy) Approval Order 2011	Office of Environmental Protection Authority	2011	<a href="#">Data</a>
P1_10	Significant Flora	Contains records of flora considered significant for the Perth and Peel. The dataset was compiled by the Technical Working Group.	Local Biodiversity Program	2011	Report of LBP WAGB
	Flora Occurrence	Identifies distribution of flora (vascular plants, gymnosperms)	Department of Parks and Wildlife	2001	<a href="#">See Metadata of Dataset 1</a>
P1_11	Decline in Species	Contains records of flora species declining in the Perth and Peel. The dataset was compiled by the Technical Working Group.	Local Biodiversity Program	2011	
P1_1	Connectivity	A dataset contains remnant vegetation extent polygons that make up Regional ecological linkage in the Perth and Peel regions, based on the Perth Regional ecological linkage and the South West Regional Ecological Linkage	Local Biodiversity Program	2011	
P1_1	Geomorphic Wetlands Swan Coastal Plain	Includes distribution of Conservation Category and Resource Enhancement wetlands.	Department of Parks and Wildlife	2011	<a href="#">See Metadata of Dataset 1</a>

Forest Management



# What can the EPT be used for?

- Running site/area specific reports
- Assessing potential impacts of prescribed premises on 'Specific Ecosystems'
- Accessing information on vegetation retention/protection status
- Informing land use planning at all levels
- Informing local natural area prioritisation/conservation planning



## ...and there is more

- Planning and monitoring natural area management
- Designing and planning for restoration of ecological linkages
- Preparing grant applications/tender specifications
- Creating maps for reports including local planning strategies, environmental strategies, greening plans or management plans
- Enabling clear communication between stakeholders



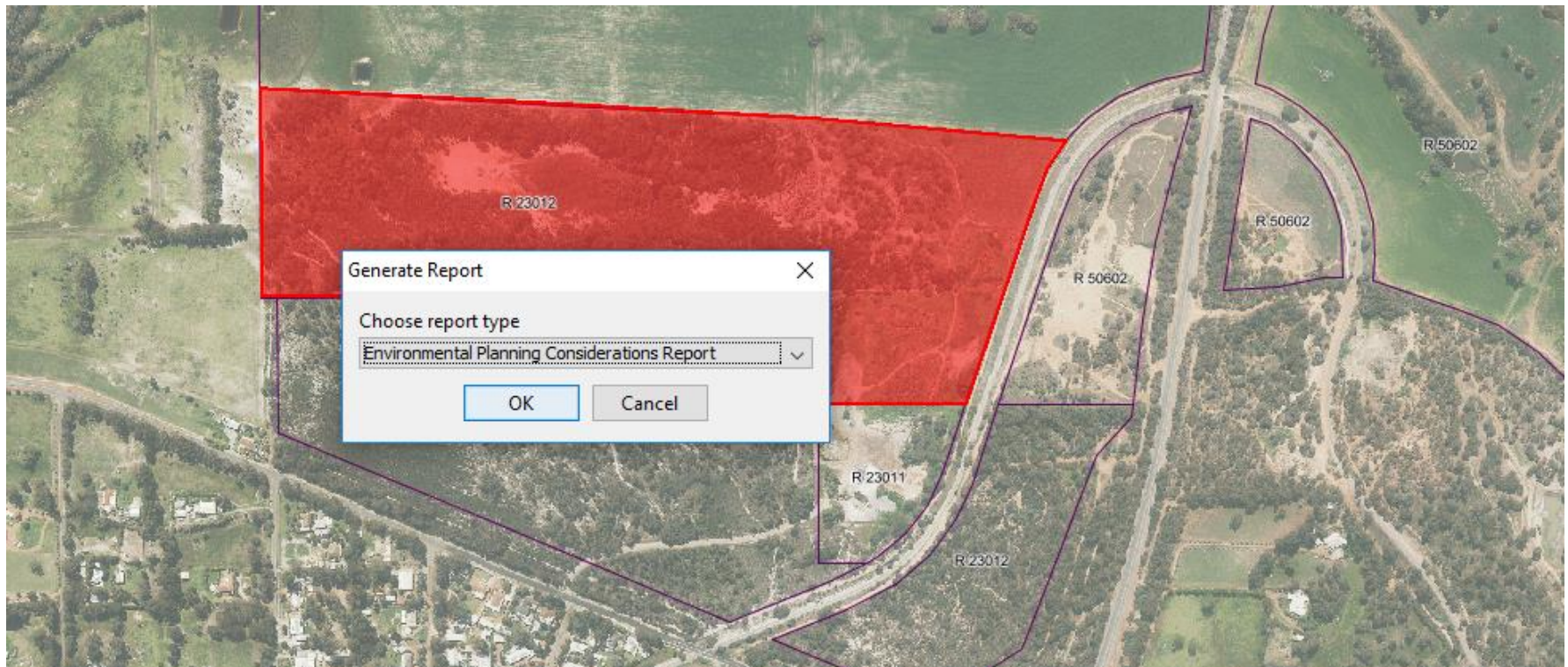


# Desktop Assessment



The screenshot displays the 'Environment Planning Tool' software interface. The main window shows an aerial map with several land parcels outlined in purple. One parcel, labeled 'R 23012', is highlighted in a semi-transparent red. Other parcels are labeled with their respective codes: 'R 7125', 'R 23012', 'R 23011', 'R 23012', 'R 506', and 'R 9788'. The interface includes a menu bar at the top with 'File', 'Edit', 'Themes', 'Locations', 'Selections', and 'Help'. Below the menu is a toolbar with various icons, including a hand, zoom in/out, pan, and a red circle highlighting a specific tool icon. On the left side, there is a 'Layers' panel with a 'Project' tab. The 'Environmental Planning Tool' section is expanded, showing a 'Select:' dropdown menu set to 'Crown Reserves'. Below this, a list of layers is displayed with checkboxes: 'Location/Topographical Features' (checked), 'Populated Places', 'Place Names', 'Homesteads', 'Local Government Authority' (checked), 'Suburbs and Localities', 'Property Boundaries', 'State Roads' (checked), 'Other Roads', 'DPaW Trails', 'Contours', 'Coast and Sea', 'Aerial photography (SLIP)' (checked), 'Aerial photography (Google)', 'Environmental Considerations', 'Natural Areas with Some Level of Protection', 'Priorities for Further Investigation', 'Additional Considerations', 'Land Use' (checked), 'Regional Schemes', 'Local Planning Schemes', 'Crown Reserves' (checked), 'FPC Plantations', and 'Forest Management Plan 2014 Proposed Land Cat'.





[Environmental Planning Consideration Report](#)



# Use the EPT to inform the implementation of Strategic Purpose Permits for native vegetation clearing?



Assess whether the proposed clearing can be implemented under the SPP provisions

Generate a desktop assessment report to inform the DER required 'Native Vegetation Clearing Report'

Create clearing footprint shape files for DER reporting



[Desktop Assessment Report for Native Vegetation Clearing Application](#)



# Mapping management issues



# Preparing grant applications



The screenshot displays the 'Environment Planning Tool' interface. The main window shows a map with various colored overlays representing different land management zones. A dialog box titled 'Annotation Summary' is open, providing details for a selected annotation set. The dialog box contains the following information:

- Annotation Set: Weed control
- Annotation Type: Weed Control
- Measurement Projection: WA\_Albiers
- Type: Grasses
- 1 polygons total area = 2.313 ha

The value '2.313 ha' is circled in red. The dialog box also includes buttons for 'Copy to clipboard', 'Recalculate', and 'Close'. On the left side of the software interface, there is a 'Layers' panel with a tree view showing the project structure, including 'Project 1', '2016-2018', 'Plant 2017', 'Weed control (Weed Control)', and 'Grasses'. The 'Grasses' layer is currently selected.



# Communicating with others

- Exchanging project files
- Generating shape files compatible with common GIS applications
- Importing shape files from stakeholders
- Generating lists of properties for targeted communication



Pin	LOT_Num	Add/Type	number	Letter	Road/Name	Locality	Postcode
1	1000127	890	W	2	GUARDIAN LOOP	CURRAMBINE	6028
2	1000907	443	W	44	GUARDIAN LOOP	CURRAMBINE	6028
3	1000908	446	W	46	GUARDIAN LOOP	CURRAMBINE	6028
4	1000918	401	W	31	DELANERE AV	CURRAMBINE	6028
7	1000925	402	W	29	DELANERE AV	CURRAMBINE	6028
8	1000920	403	W	27	DELANERE AV	CURRAMBINE	6028
9	1000921	404	W	25	DELANERE AV	CURRAMBINE	6028
10	1000922	405	W	23	DELANERE AV	CURRAMBINE	6028
11	1000923	406	W	21	DELANERE AV	CURRAMBINE	6028
12	1000972	447	W	48	GUARDIAN LOOP	CURRAMBINE	6028
13	1000973	448	W	30	GUARDIAN LOOP	CURRAMBINE	6028
14	1000974	449	W	32	GUARDIAN LOOP	CURRAMBINE	6028
15	1000975	450	W	14	GUARDIAN LOOP	CURRAMBINE	6028



# How the EPT improves environmental practice in Local Government?

---

- Raises awareness of environmental data
- Facilitates consistency in meeting regulatory requirements and increases workflow efficiencies
- Allows consideration of local values in the regional context
- Increases Local Government capacity to undertake strategic planning or reserve management and consider environmental issues in decision making
- Facilitates cross boundary cooperation and stakeholder communication





## More information

---

**WALGA's website:**

<http://lbp.walga.asn.au/Tools/EnvironmentalPlanningTool.aspx>

Contact:

Renata Zelinova on 9213 2521 or (Tuesdays-Thursdays) Email: [rzelinova@walga.asn.au](mailto:rzelinova@walga.asn.au)

Acknowledgment: The EPT is supported by Geolce platform,  
developed and provided by **Fluffy Software**

