



Implementing recovery actions for EPBC species



Communities protecting EPBC species

Why do it?

Who's involved?

How's it done?

What are the results?

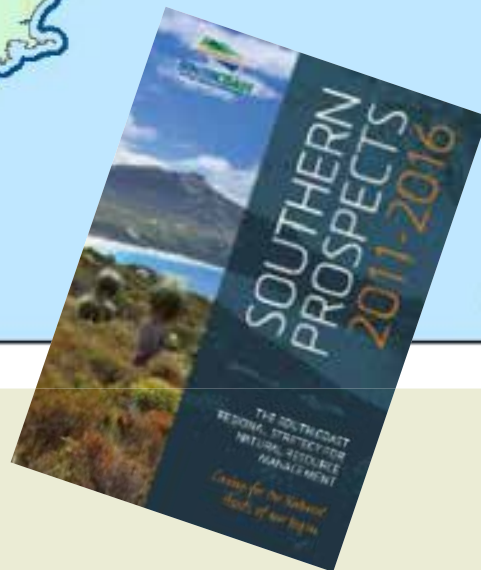
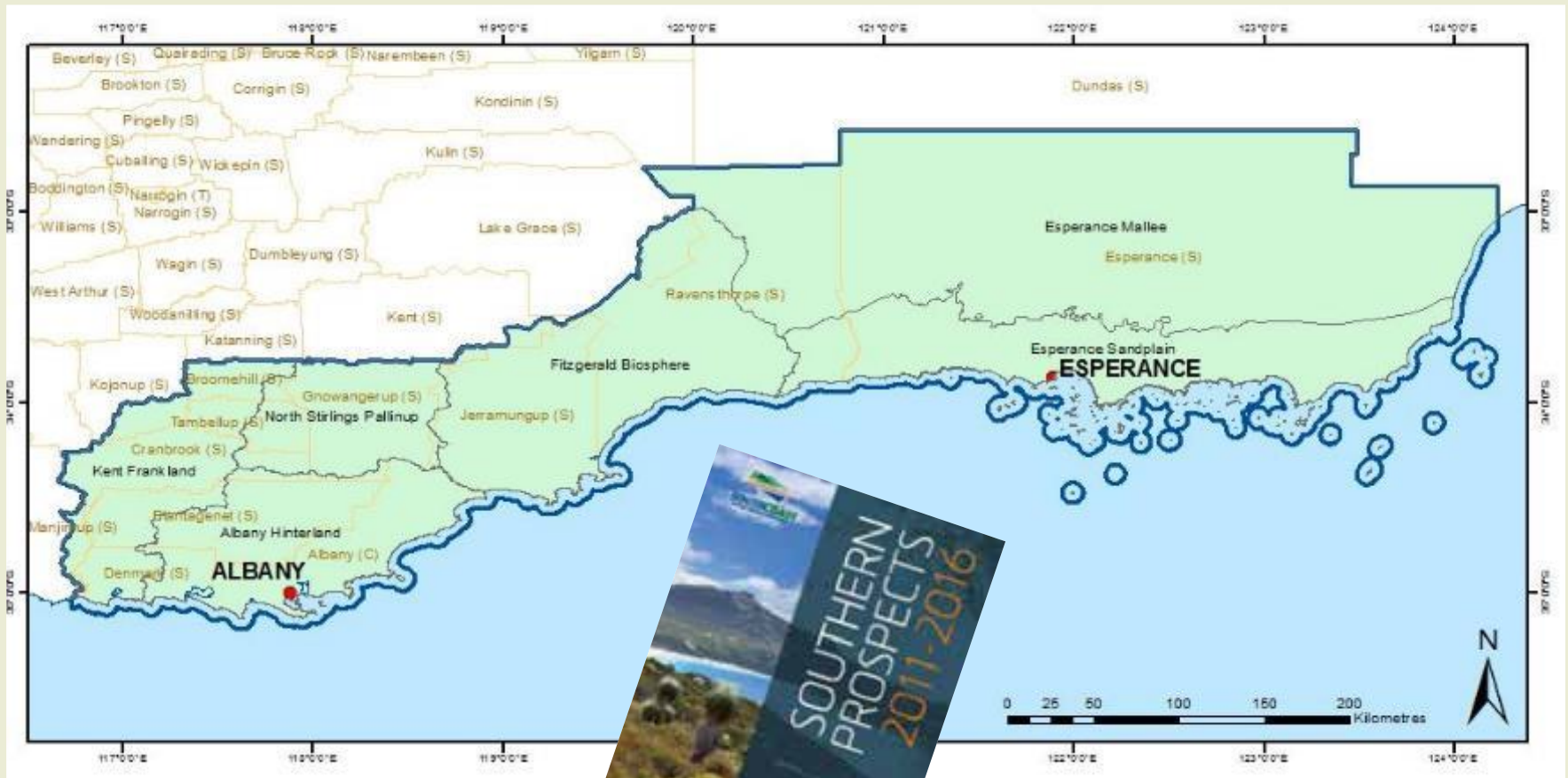


Project vision

Its about the landscape!
maintain resilience
link, protect, manage!



The South Coast



Assets

- SW WA biodiversity 'Hotspot'
- high endemism
- habitat types
- species found nowhere else



Key projects

- Landscape restoration (revegetation, fencing, weed control, pest management)
- Coastal Corridors
- Indigenous site restoration & learning
- Invasive species inc. *Phytophthora* dieback
- Support & capacity for NGO partners



Project partners

- Sub-regional Landcare/production groups
- NGOs
- Local Government
- State Government Agencies

- **NLP program 12 external partners**
– **landscape scale**

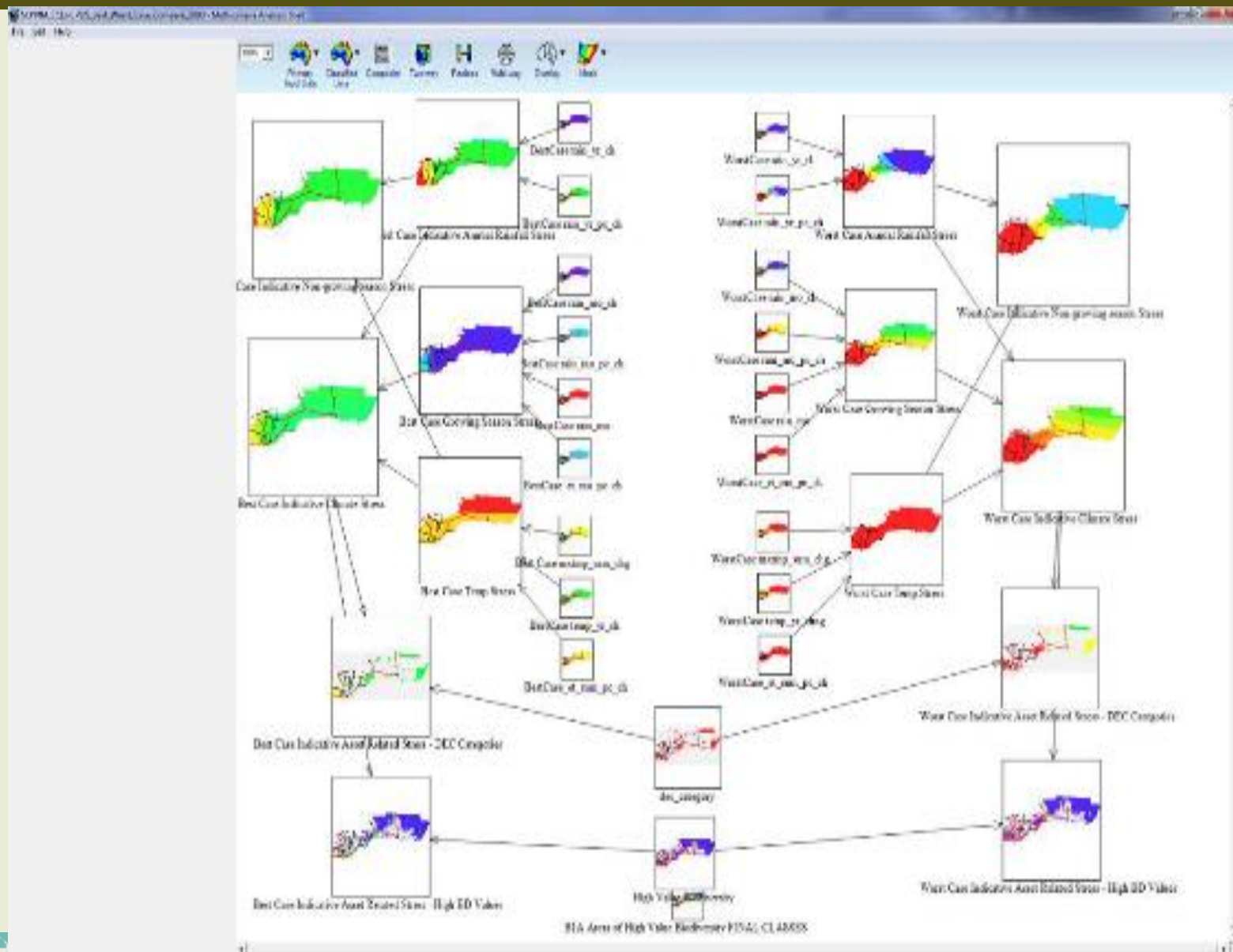


Planning tools

- Regional Threatened species & communities Mgt Plan
- Invasive species Framework 2014
- Dieback Investment Framework 2014
- Biodiversity Prioritisation Framework 2015
- Conservation Action Plans (Gondwana Link)



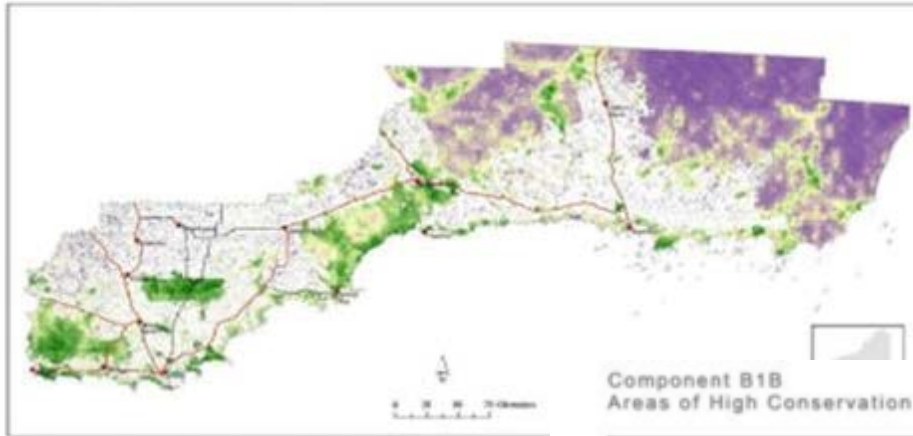
Prioritisation tools – MCAS



Prioritisation – MCAS

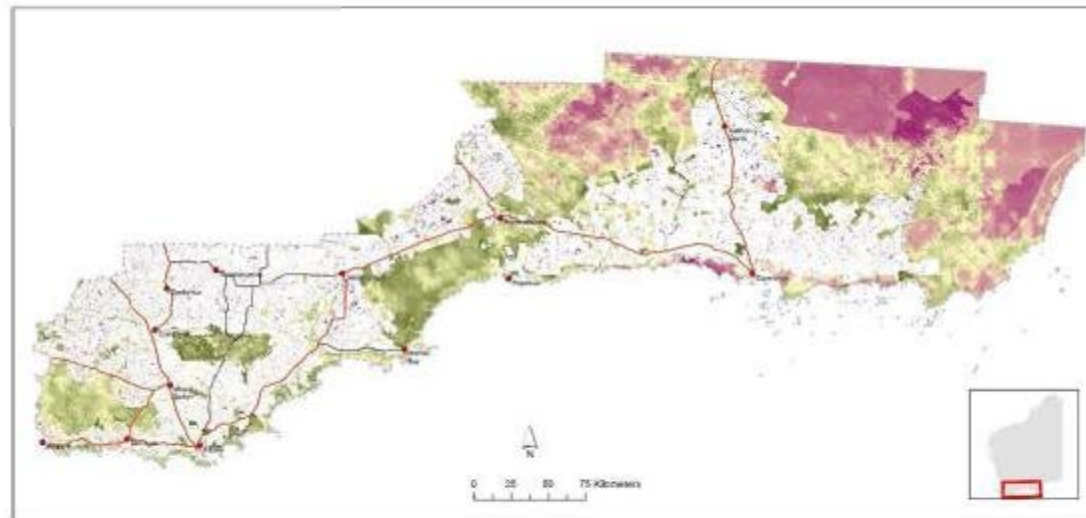
Component B1A
Areas of High Value Biodiversity

South Coast NRM
Planning for Climate Change



Component B1B
Areas of High Conservation Value/ Potential

South Coast NRM
Planning for Climate Change



Prepared by:
The South Coast NRM Planning for Climate Change
Project. The map shows the results of the assessment
conducted by the South Coast NRM Planning for
Climate Change Project. The map is for information
only and does not constitute a guarantee, warranty,
or representation of any kind.

**Economics
& Associates**




Planning tools – DIDMS (Dieback)

Home | MAPPING | Dieback Public Map

Dieback Public Map

Dieback Public Map is a basic viewing platform of generic plant disease information for users with basic information needs. The data presented is linked directly to publically available data via DIDMS. For more detailed plant disease mapping information, please register for a free DIDMS user account at the bottom of this page or if you have existing DIDMS please click on the following link > [DIDMS login](#).

This map shows locations of plant disease information (Phytophthora species).

To turn layers on and off, click the layers button to the top right of the map. 

Dieback Public Map



DIDMS; Register a User Account

Users are required to register with the DIDMS Administrator in order for an User account to be set up. Once your account has been set up by the Administrator you will receive an email letter with your user name, password, user type (External or Internal) and Privacy Disclaimer. If you would like to be a part of the DIDMS Please email the administrator your:

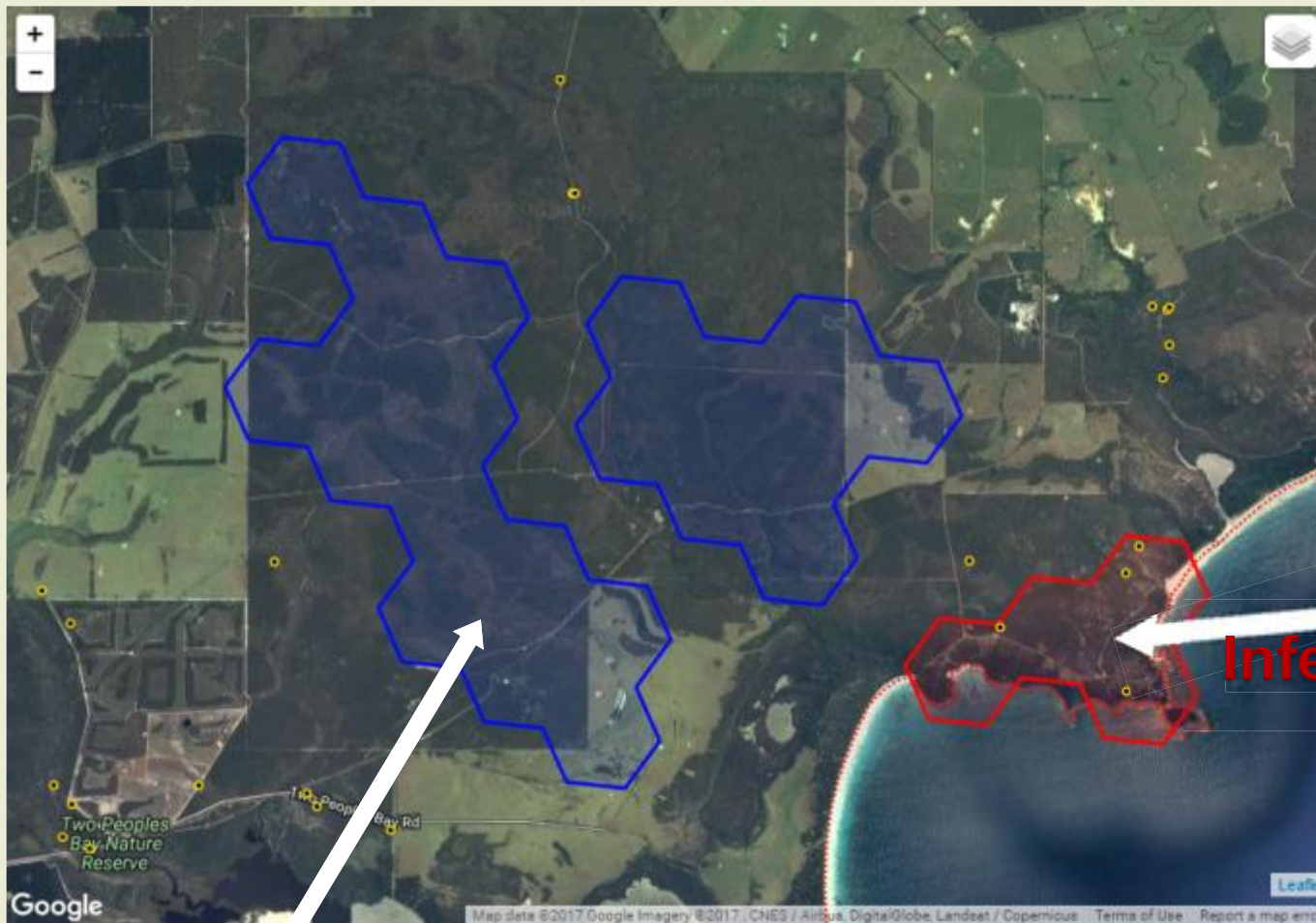
Name *	Position *
Email Address *	Phone (Optional)
Organisation *	Whether you are a DPavil registered Dieback Interpreter
<input type="button" value="Send"/>	

DIDMS

Public map

Registered user

Priority Protection Areas (PPA)



Uninfested hotspot

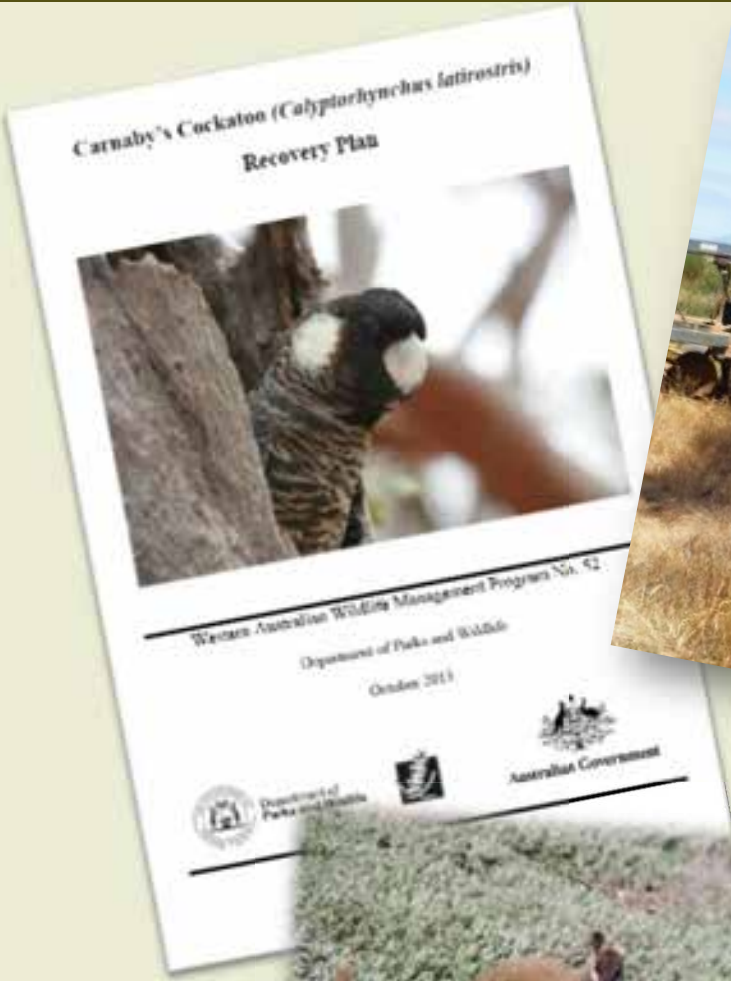
Infested hotspot

= Management implications

Partnerships



Partnerships



Noongar family field trips



Shared learning on country



Challenges / innovations

- Eradication trials & post fire
- Potoroo translocation
- “Dieback live” – T.V. and cinema



STICK TO TRACKS & TRAILS

AVOID TRAVELLING IN WET SOIL CONDITIONS

ENSURE YOUR VEHICLE, FOOTWEAR & EQUIPMENT IS SOIL-FREE BEFORE ENTERING NEW AREAS



Challenges / achievements

- Funding for Walpole Wilderness (Thr. species) 15,500ha
- Responses to fire
- Flora surveys DRF - habitat
- Western ground parrot - volunteers



Managing threats – recovery actions

- State NRM support for Dieback
- 620 species DRF
- Training & behaviour change
- Nurseries! - NIASA accreditation or..

risks spread in urban fringe...

- Gorse & boxthorn
- 75ha/year
- Outliers, & Biosphere



- Local communities & issues e.g. DWAG



Recovery actions

Ecological monitoring

- Bush Heritage Australia – first survey of Monjebup North
- 5 locations, 500 traps
- 15 x 15m permanent vegetation monitoring plots
- 3 species fish 30km inland



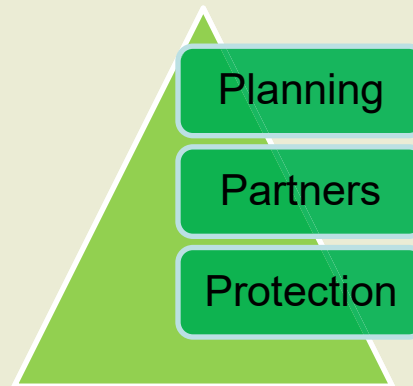
Recovery actions



DPaW with student
volunteers!



Recovery actions – key progress



Key points - Implementing recovery actions

- Planning tools
landscape approach
- Regional partners
common interest
- Unique values
plants and animals



Questions?

