

Achieving improved fauna connectivity during highway upgrade projects: Case study of the Caloundra Road to Sunshine Motorway (CR2SM)

Andrea McPherson, Matt Davis of Arup

in conjunction with



ARUP

JACOBS

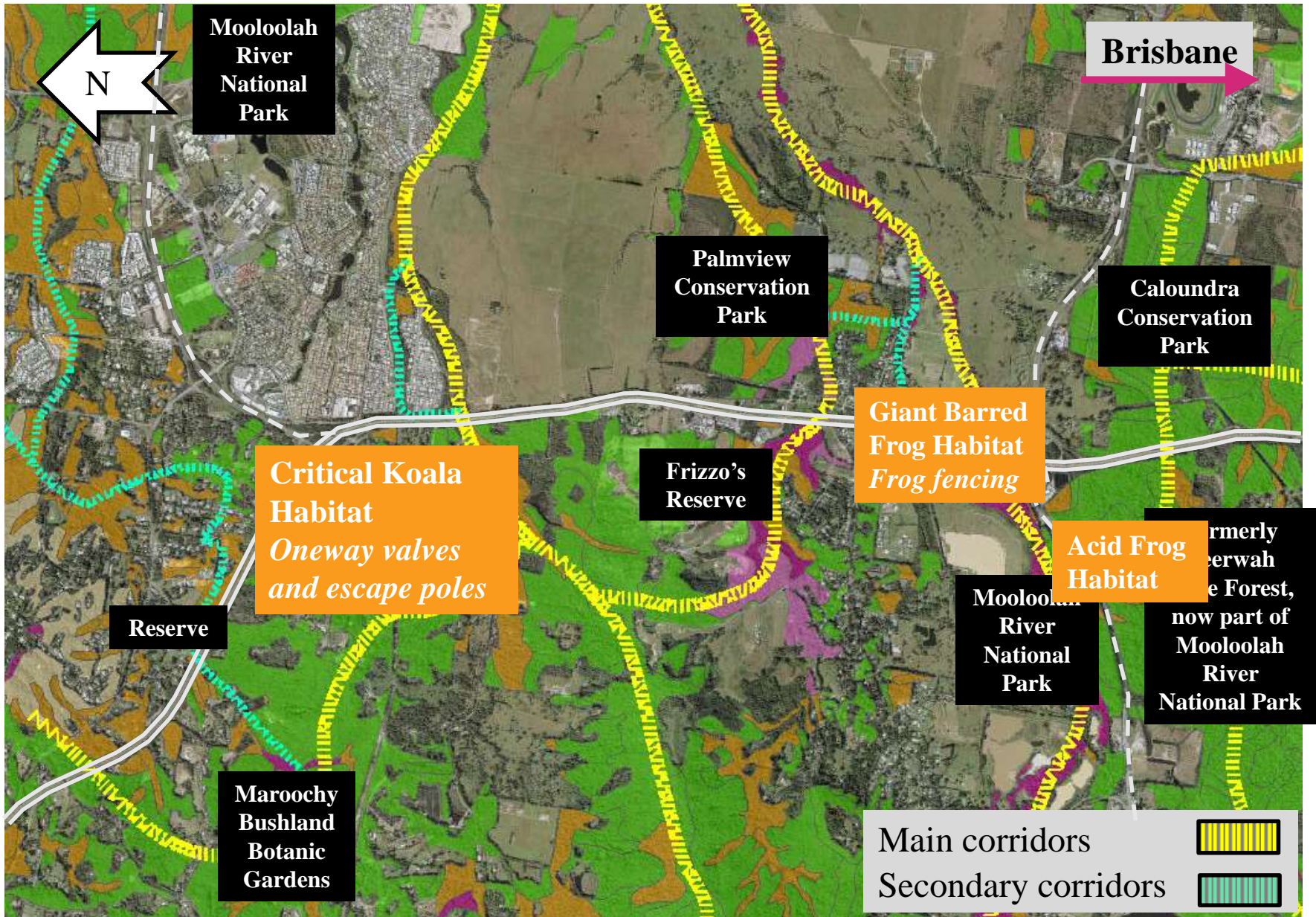


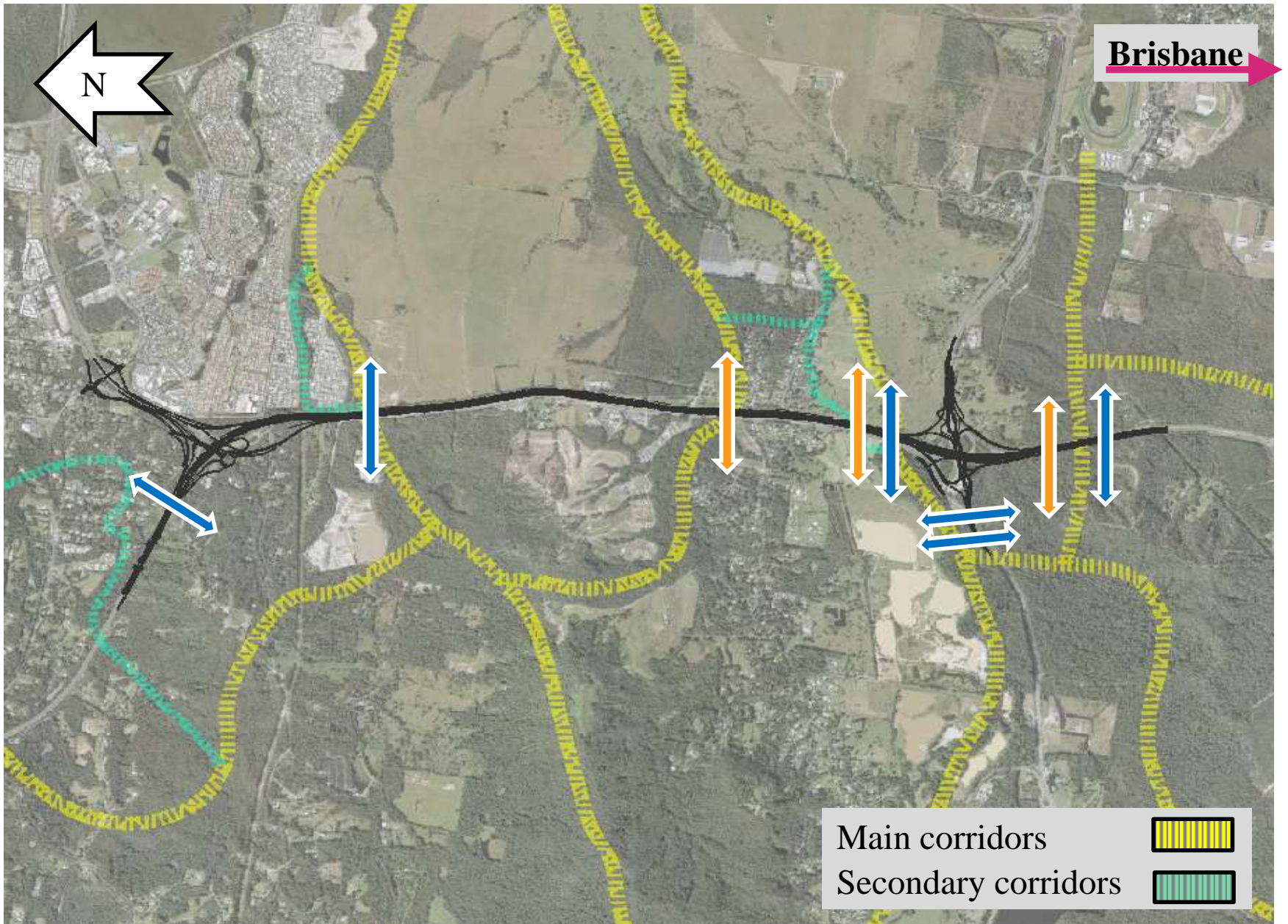
Australian Government

BUILDING OUR FUTURE



Queensland Government



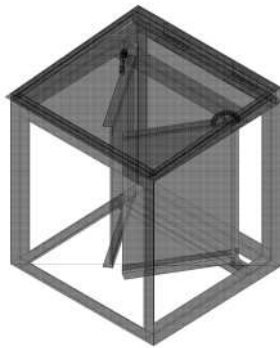
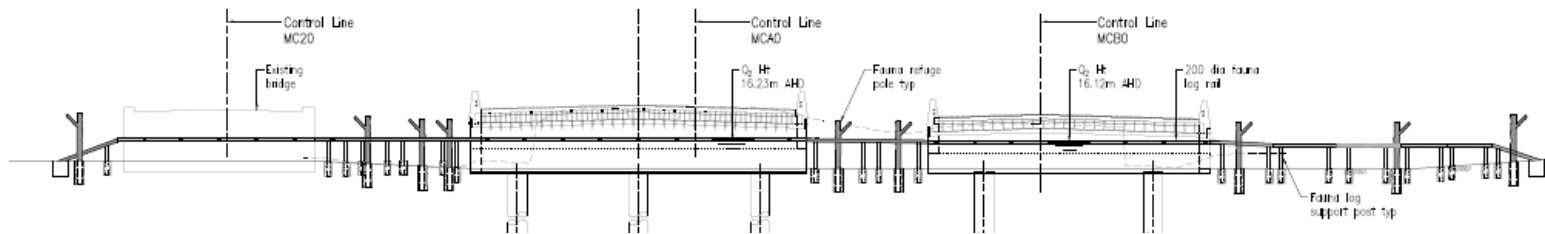


Brisbane

Main corridors
Secondary corridors

ARUP

Thank you



OVERVIEW:

- Steel frame and fixed lid with Colebrook sides and top
- 540 long x 590 wide x 800 tall (excluding lid)
- Sprayed-coated aluminium floor frames with clear aluminium
- 15mm compressed fibre cement floor panels, painted
- All steelwork hot-dipped galvanized
- Install on a level or near-to-level surface where possible

