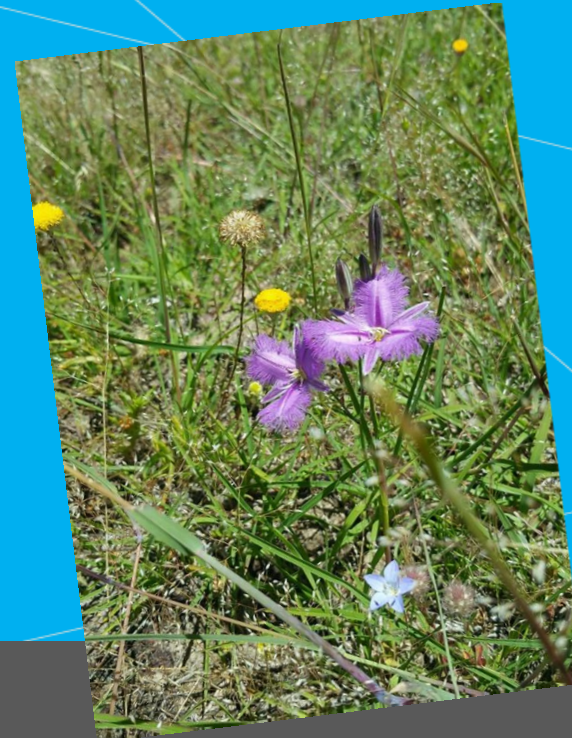


Simple Management Tools to Solve Complex Restoration Puzzles

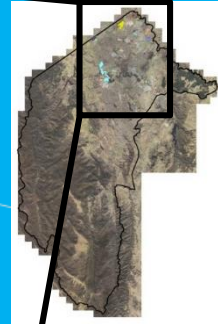
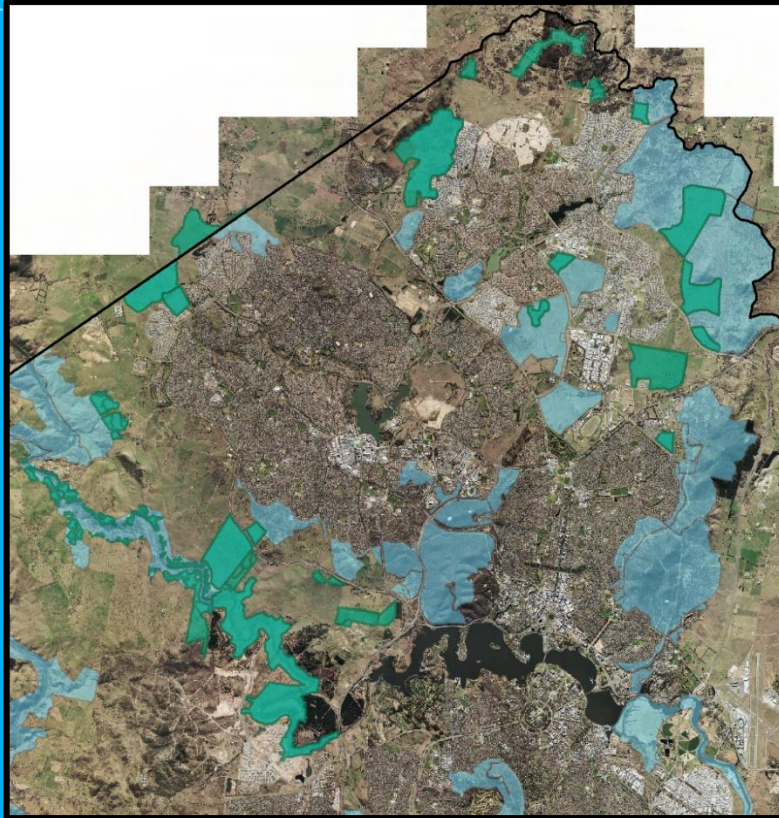
Grassland, Moths, Cows and Weeds

Alexi Williams

ACT Parks and Conservation Service
Environmental Offsets



Environmental Offsets



2,027 ha of approved offsets

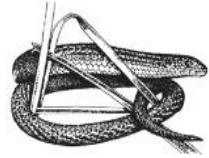
Increasing Canberra Nature Park by nearly 20%

Environmental Offsets

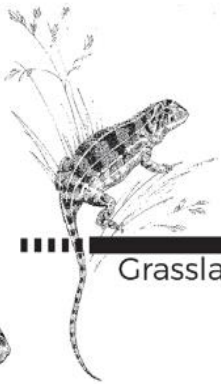
Jarramlee 112 ha

Part of the Gooromon Grasslands





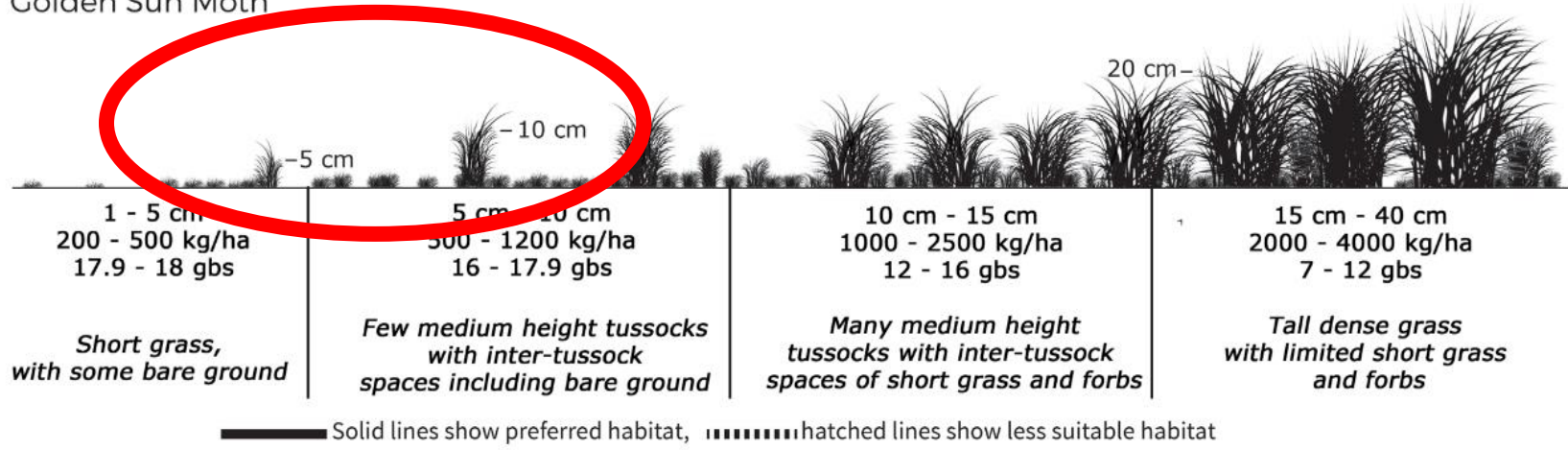
Striped Legless Lizard



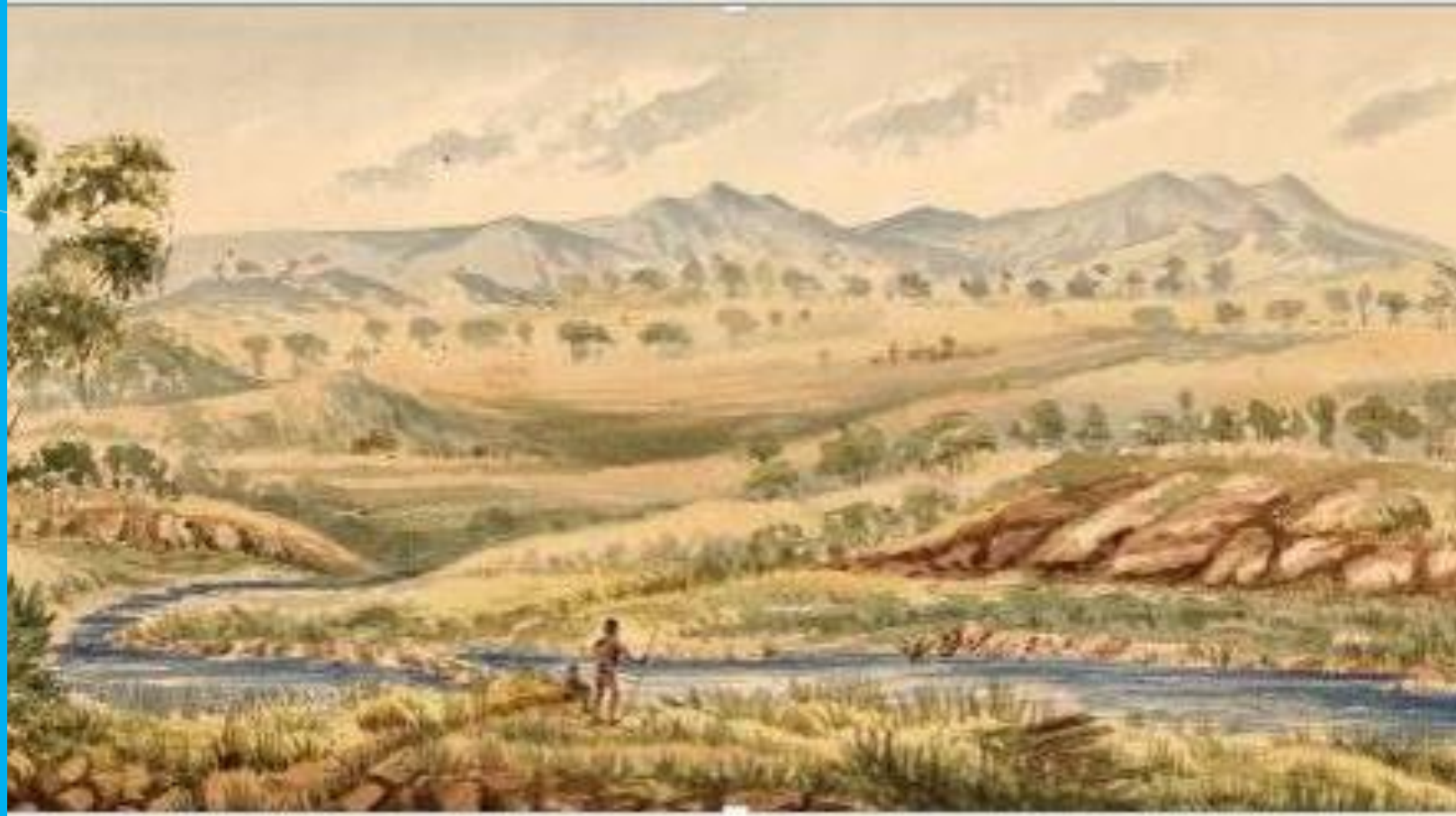
Grassland Earless Dragon



Golden Sun Moth

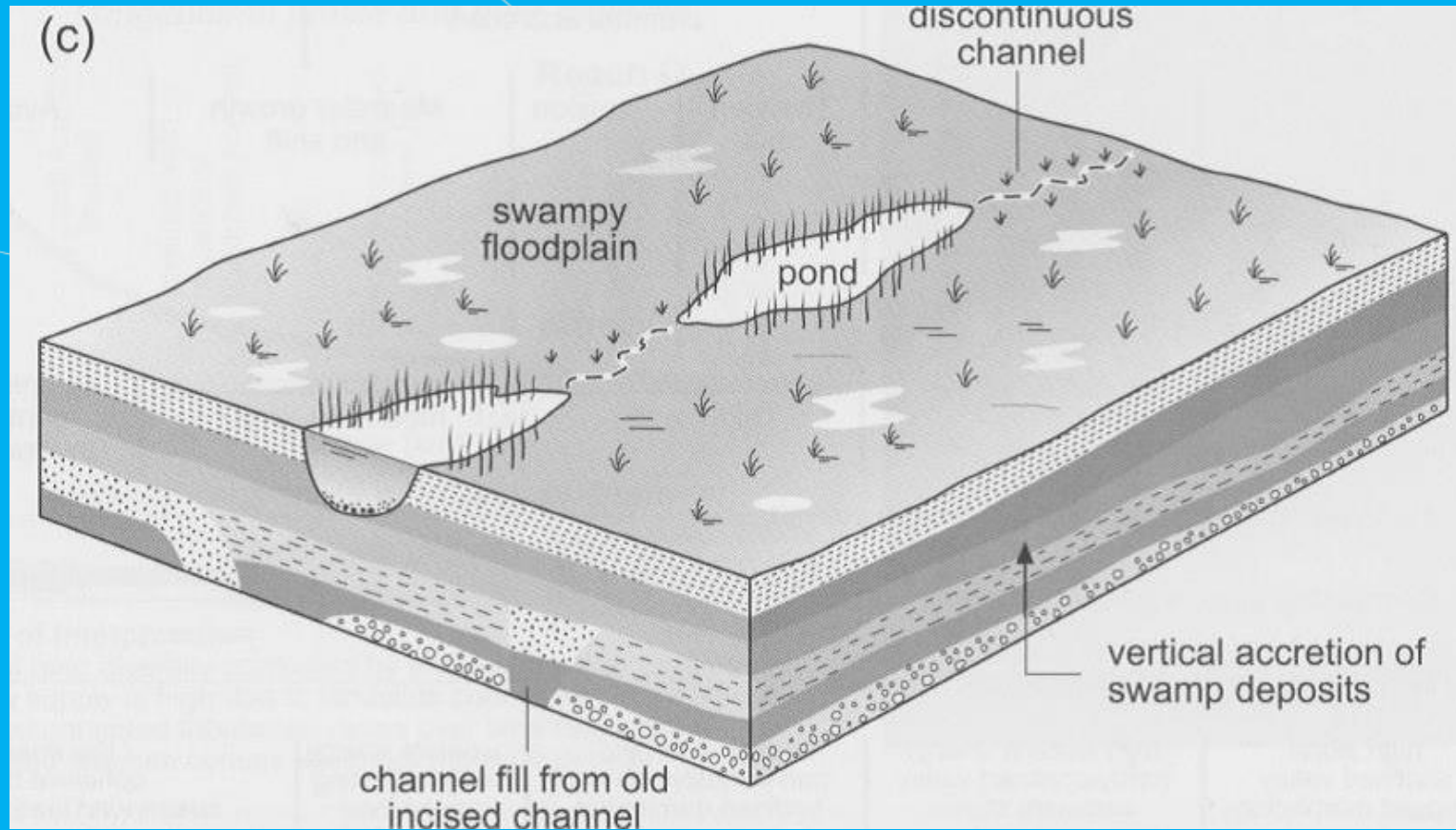


Indigenous History



Robert Hoddle paintings, Ginninderry Plains, 1832-35 (National Library of Australia)

Series of Ponds



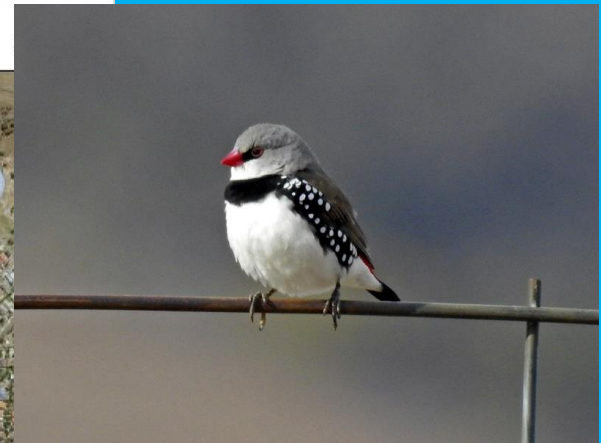
Schematic of an intact chain-of-ponds environment. These systems are a variation of a cut-and-fill landscape, typified by the vertical accretion of finegrained sediments (from Fryirs & Brierley, 2013).

Dealing with a modified landscape and conflicting values



Eucalyptus species include

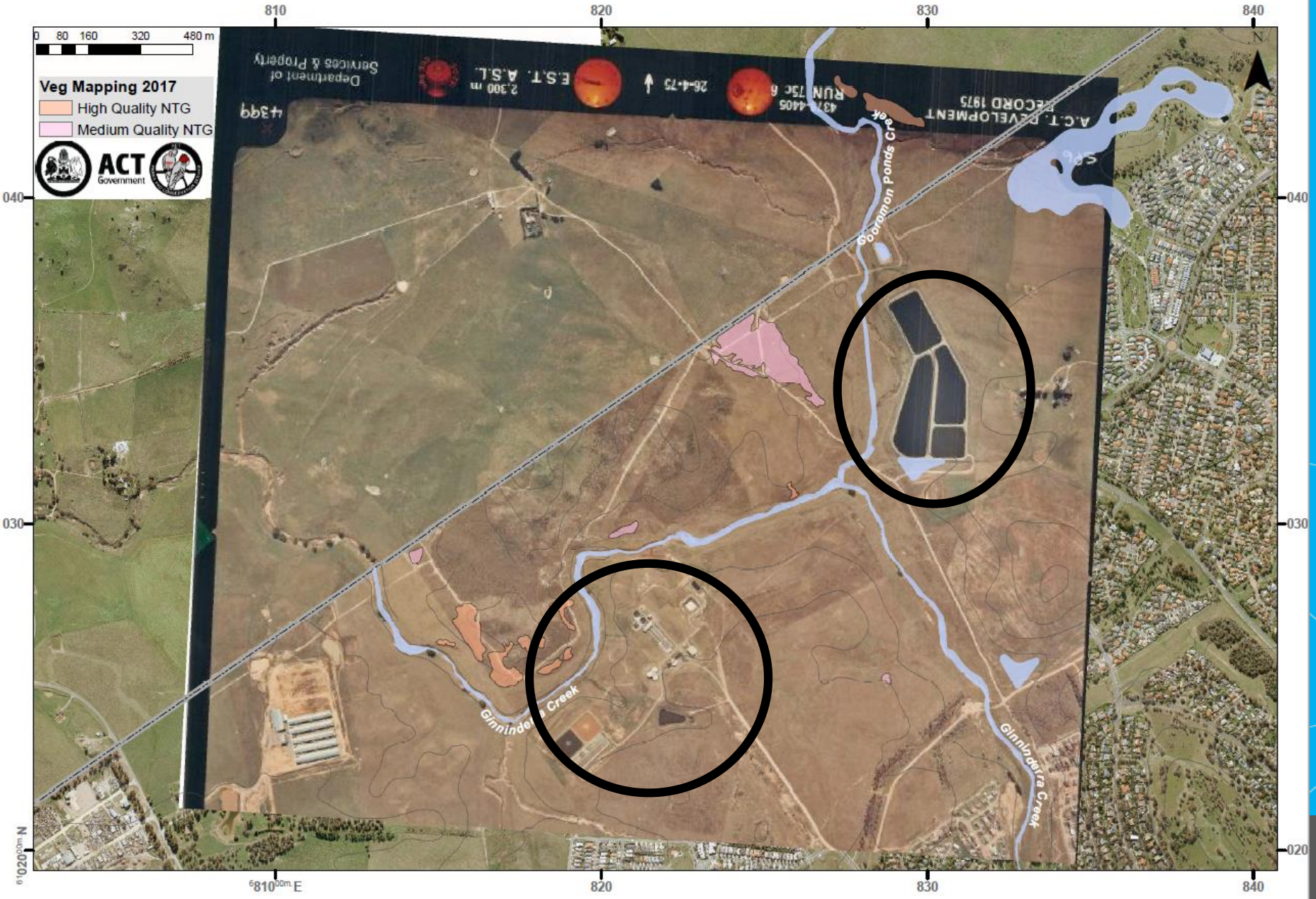
- E. mannifera
- E.globulous
- E.cinerea
- E. tricarpa



0 80 160 320 480 m

Veg Mapping 2017

- High Quality NTG
- Medium Quality NTG



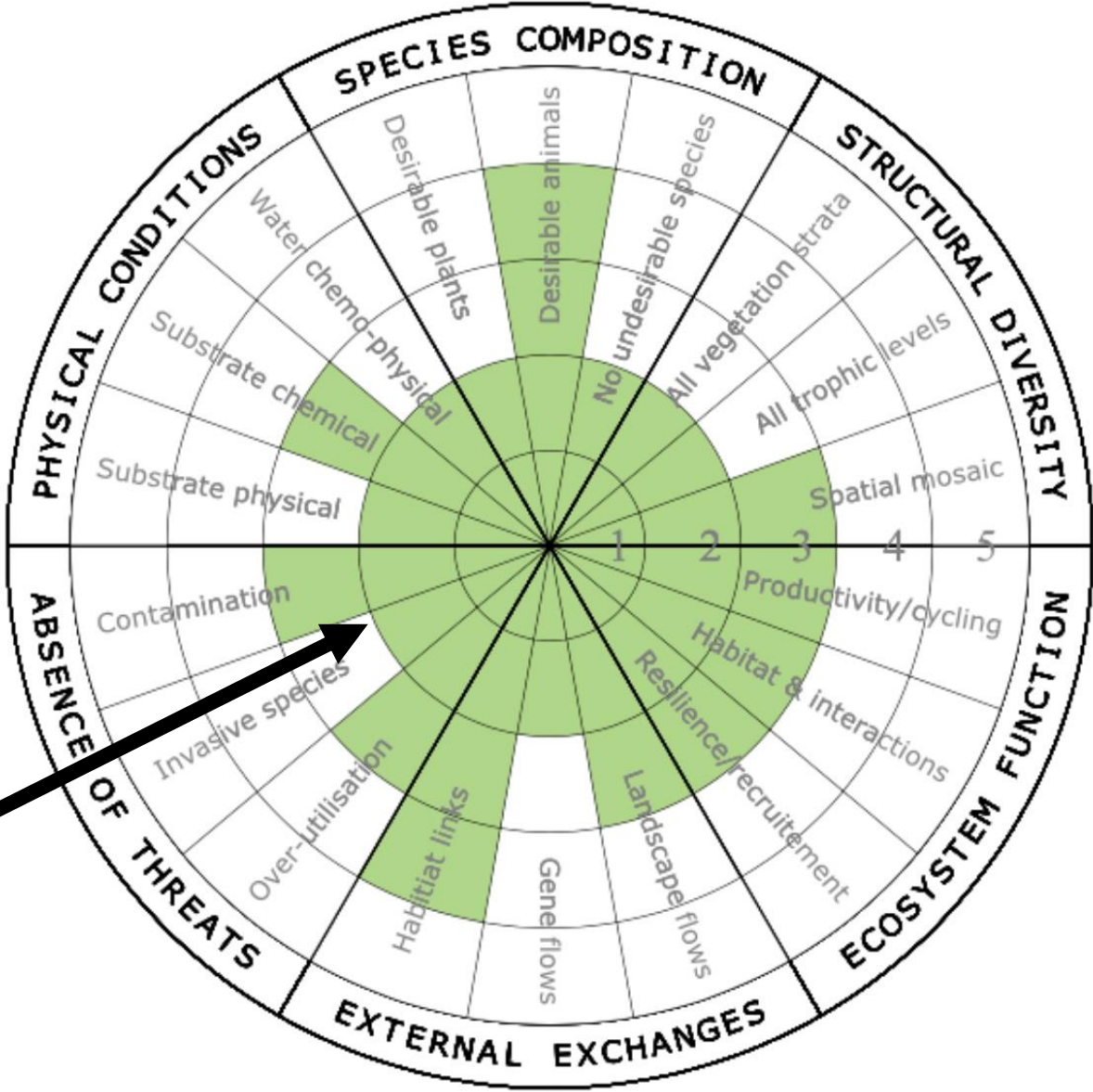


NOT Giant Sumo
Golden Sun Moth Larvae



- Increase the Natural Temperate Grassland from 6.8 ha to 7.6 ha**
- Increase the Golden Sun Moth habitat from 32 ha to 48 ha**
- Improve connectivity to link surrounding sites so as to increase the total**

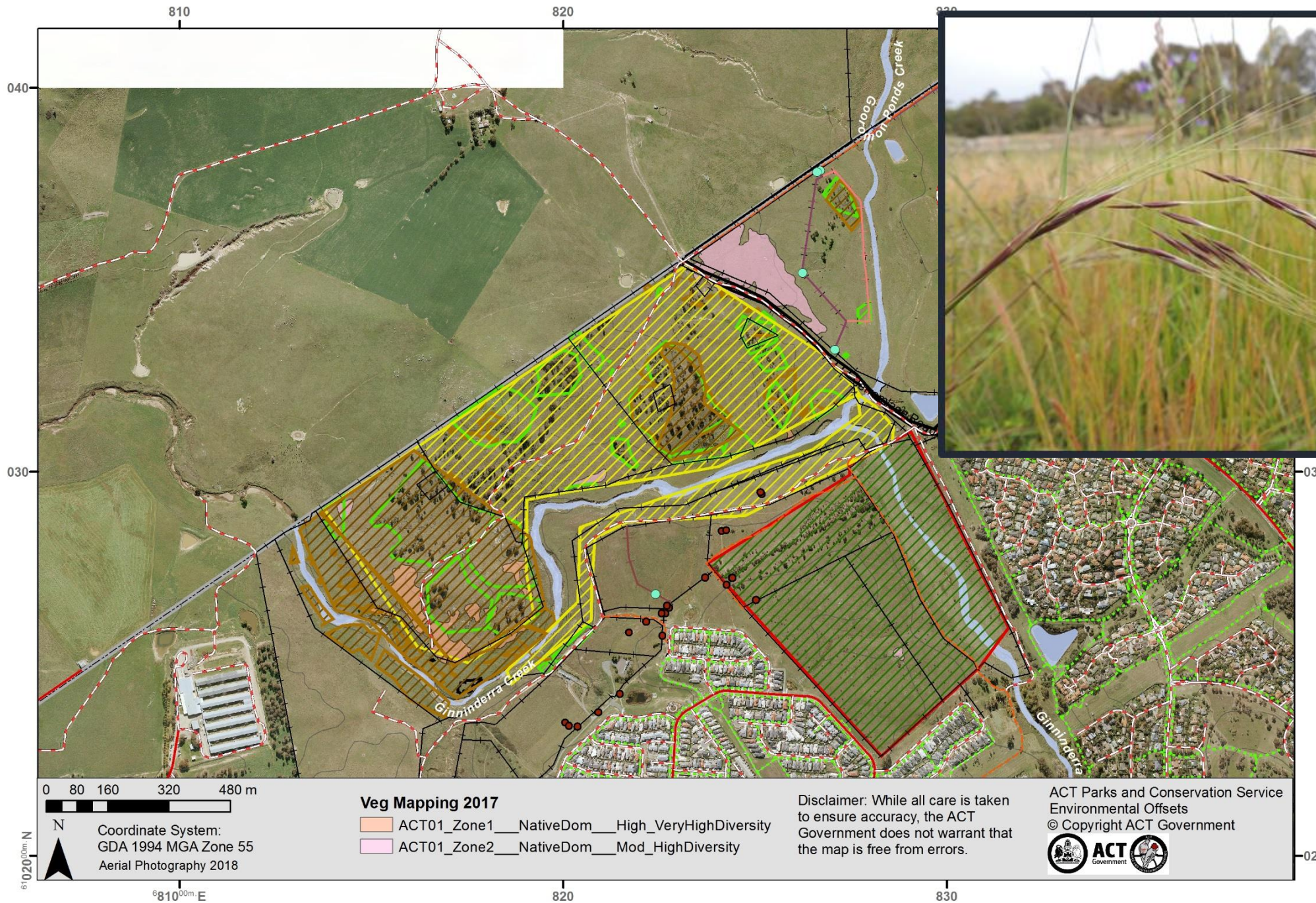
Society for Ecological Restoration Standards Recovery Wheel



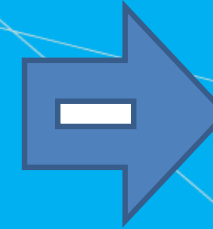
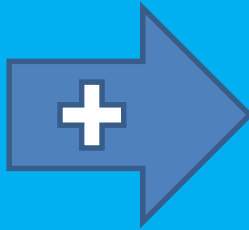
Major Threat – Invasive Species

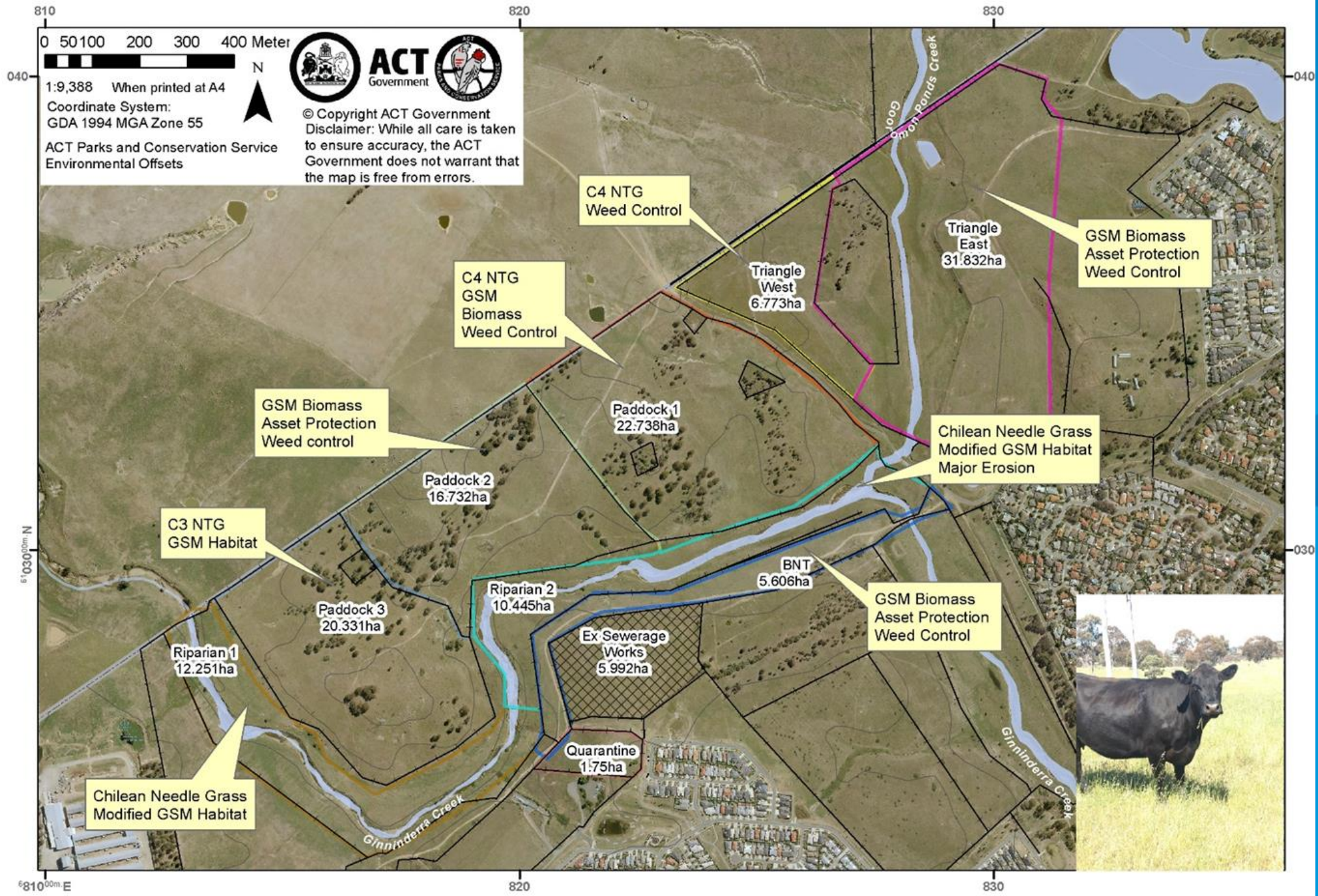
ASSESSOR: Alexi Williams
SITE: Jarramlee Offset

DATE: 2018-09-10



Grazing management (well researched, simple and cost effective)





0 50 100 200 300 400 Meter



© Copyright ACT Government
 Disclaimer: While all care is taken to ensure accuracy, the ACT Government does not warrant that the map is free from errors.

1:9,388 When printed at A4
 Coordinate System:
 GDA 1994 MGA Zone 55
 ACT Parks and Conservation Service
 Environmental Offsets

C4 NTG
Weed Control

C4 NTG
GSM
Biomass
Weed Control

GSM Biomass
Asset Protection
Weed control

C3 NTG
GSM Habitat

Paddock 2
16.732ha

Paddock 1
22.738ha

Triangle
East
31.832ha

GSM Biomass
Asset Protection
Weed Control

Chilean Needle Grass
Modified GSM Habitat
Major Erosion

Riparian 1
12.251ha

Paddock 3
20.331ha

Riparian 2
10.445ha

BNT
5.606ha

GSM Biomass
Asset Protection
Weed Control

Ex Sewerage
Works
5.992ha

Quarantine
1.75ha

Chilean Needle Grass
Modified GSM Habitat



61030^{00m} N

820

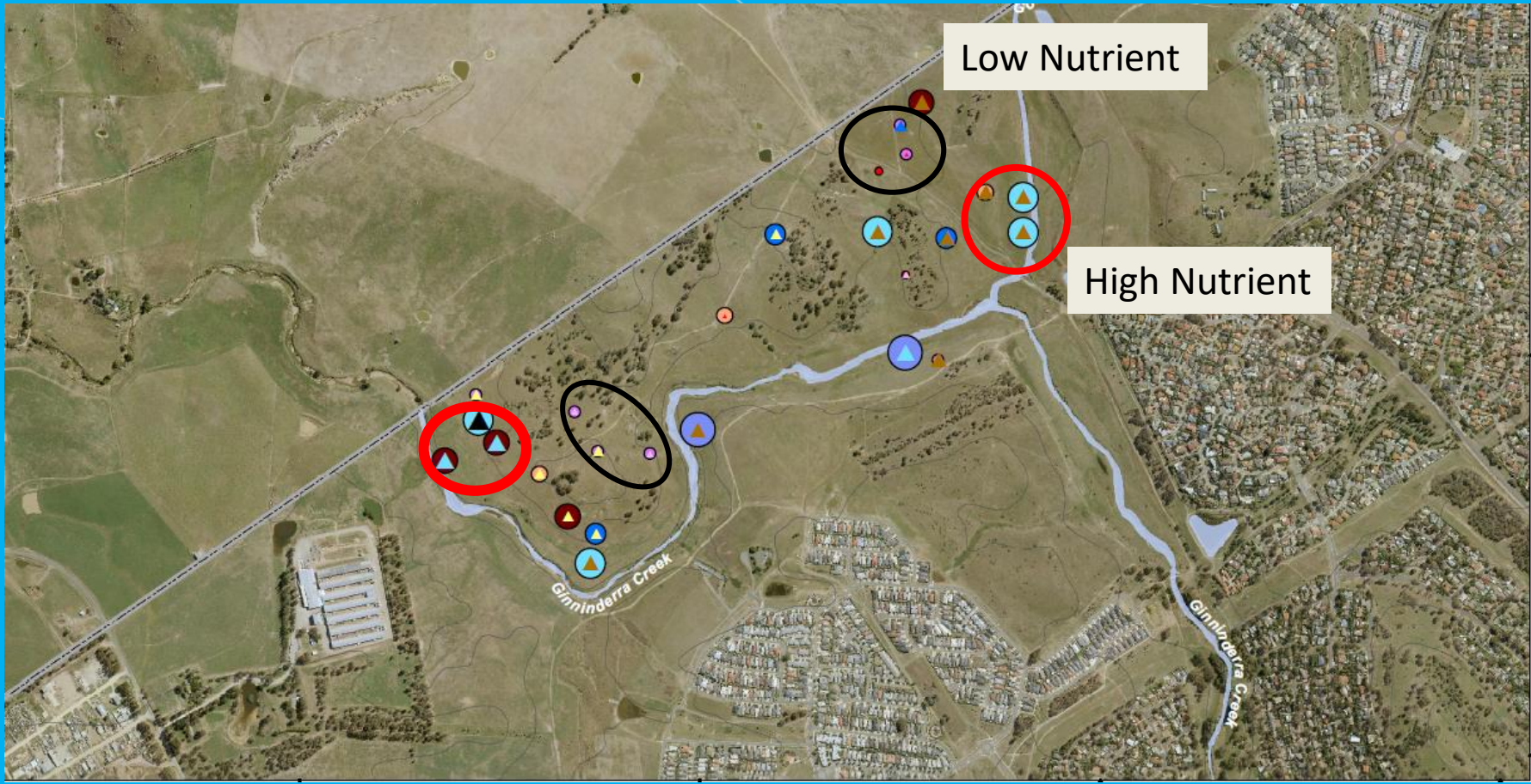
830

61040^{00m} N

6810^{00m} E

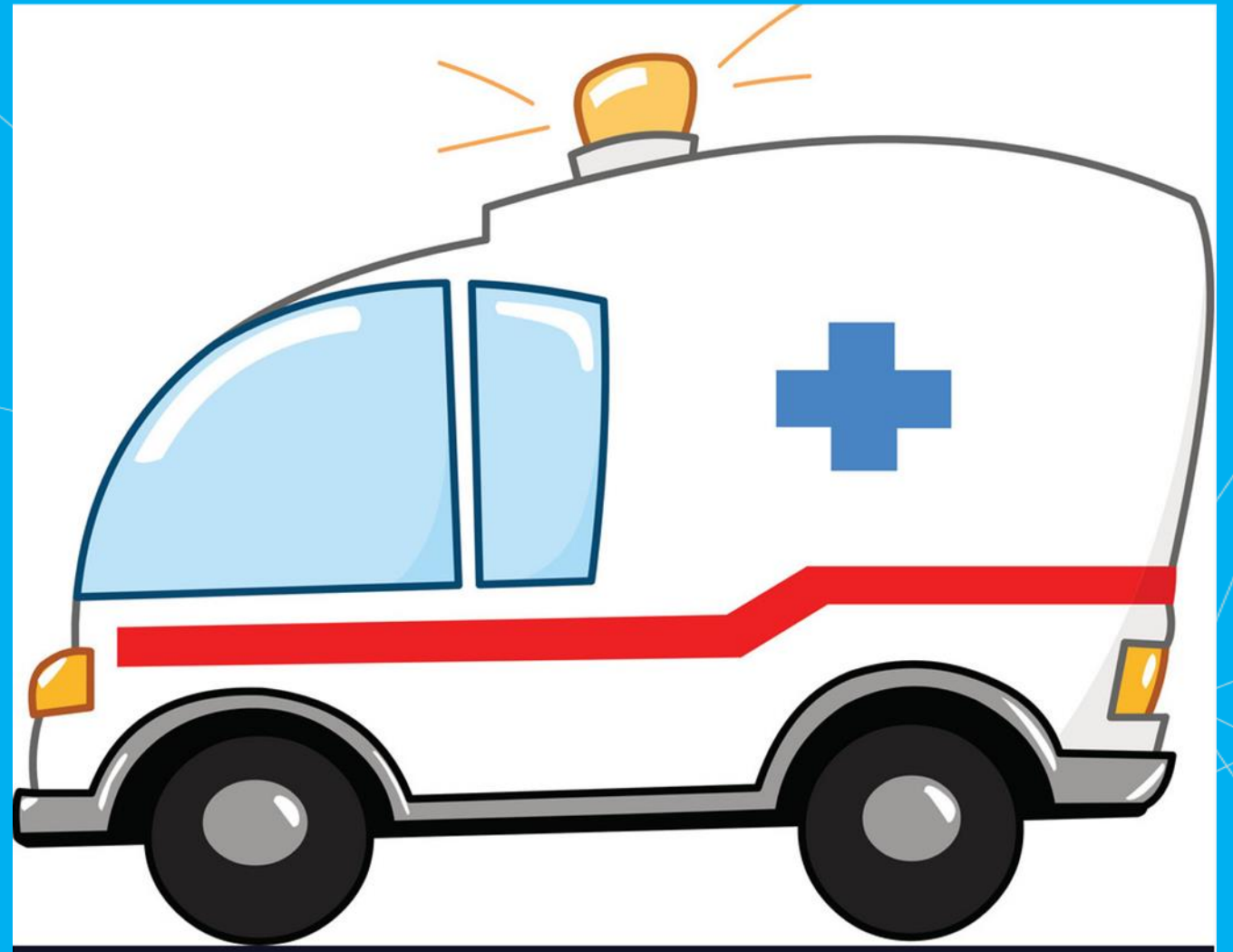
820

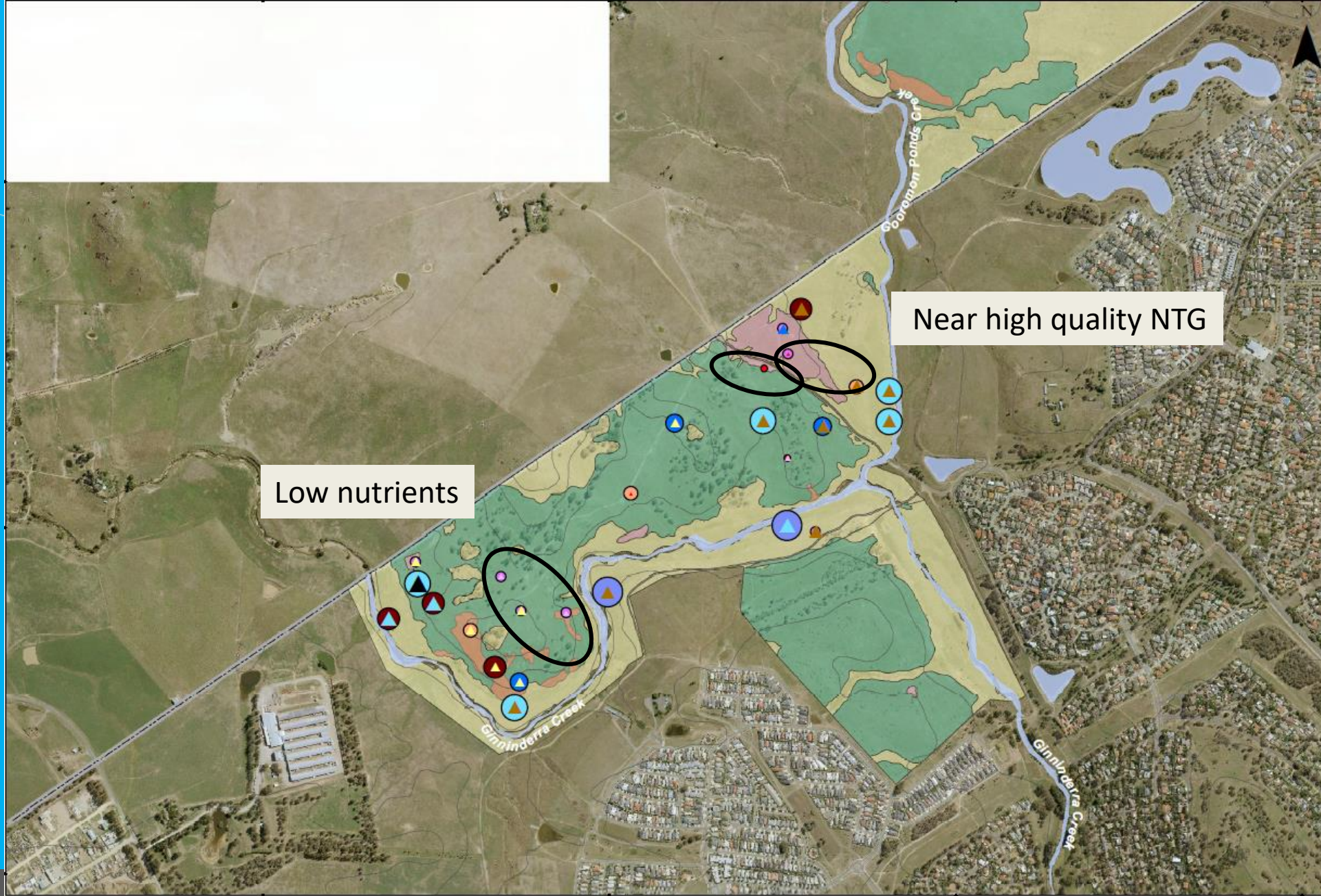
830



SITE TRIAGE

- Soil
- Vegetation Monitoring
- Disturbance History
- Weeds
- Patch Size
- Corridor Connectivity



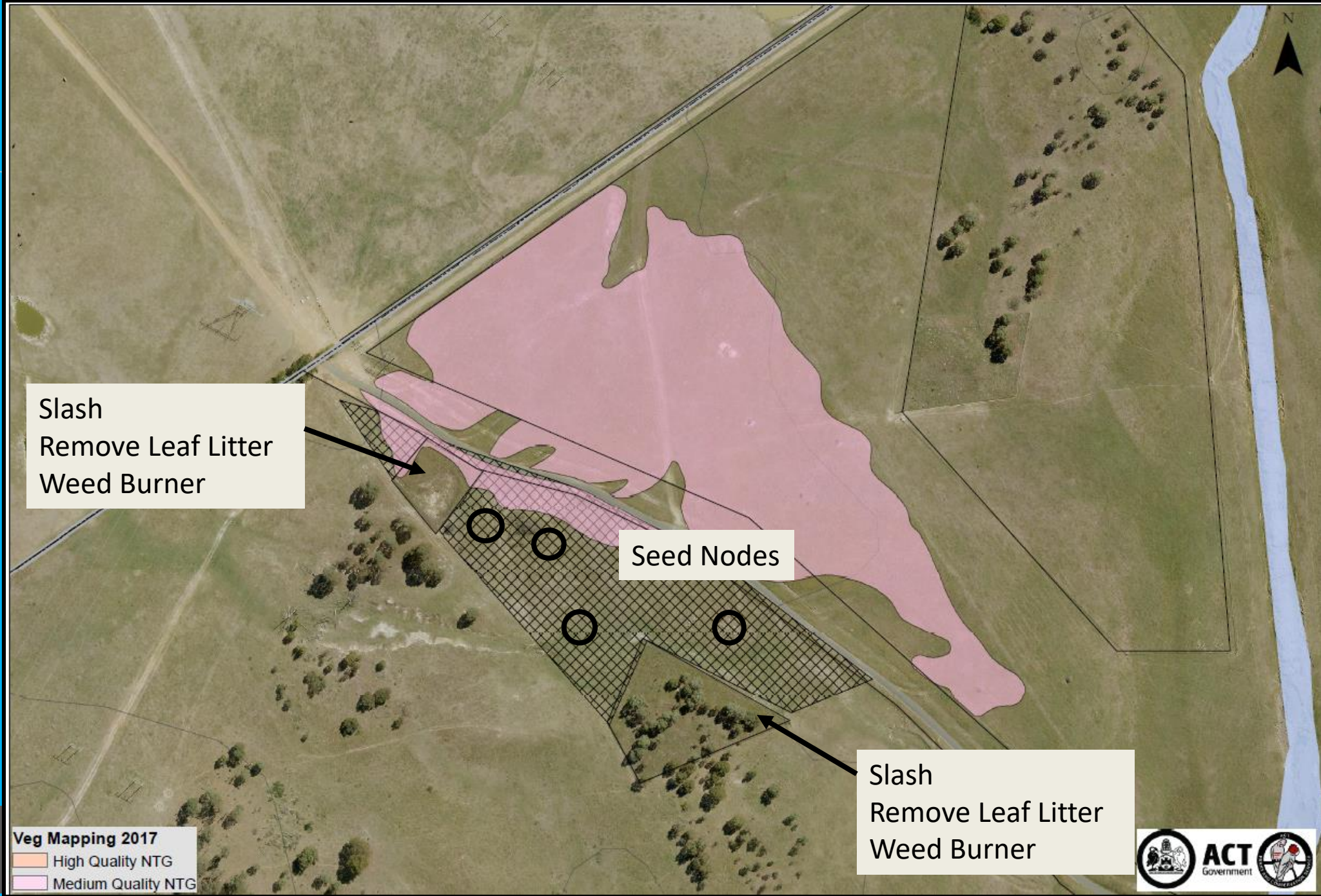


Low nutrients

Near high quality NTG

Using the Weed Burner





Slash
Remove Leaf Litter
Weed Burner

Seed Nodes

Slash
Remove Leaf Litter
Weed Burner

Veg Mapping 2017
High Quality NTG
Medium Quality NTG





What have we learnt about solving complex restoration puzzles?

