



GREEN TICKET

Environmental Education -
Managing Environmental Risk

Bill Haylock



Purpose

- What is environmental risk?
- Deciding on appropriate education/awareness program to manage risk
- Decision making tools to help define a program



What is an
environmental
aspect?





Aspect: an element of an organisation's activities, products or services that can interact with the environment (iso 14001).

Environmental aspects



Environmental aspects



- Stormwater or water runoff
- Generation and disposal of wastes (oils, fuels, sewage, chemicals, asbestos, waste water, hazardous substances), Spills
- Noise, vibration, Air emissions, dust, CO2 NOx
- Disturbance of cultural heritage (indigenous and European)
- Resource Consumption
- Erosion and sedimentation
- Flora and fauna destruction and clearing (habitat loss), Spread of weeds



What is an
environmental
hazard?





Hazard: an event or object that has the potential to impact on the environment.



What is an environmental impact?



GREEN
TICKET



Environmental impacts: any change to the environment, whether adverse or beneficial, wholly or partially resulting from the organisation's aspects

- Soil contamination
- Water pollution
- Groundwater contamination
- Air pollution
- Complaint
- Reduced resources
- Sedimentation
- Impact to flora and fauna
- Contribution to global warming (greenhouse gas)



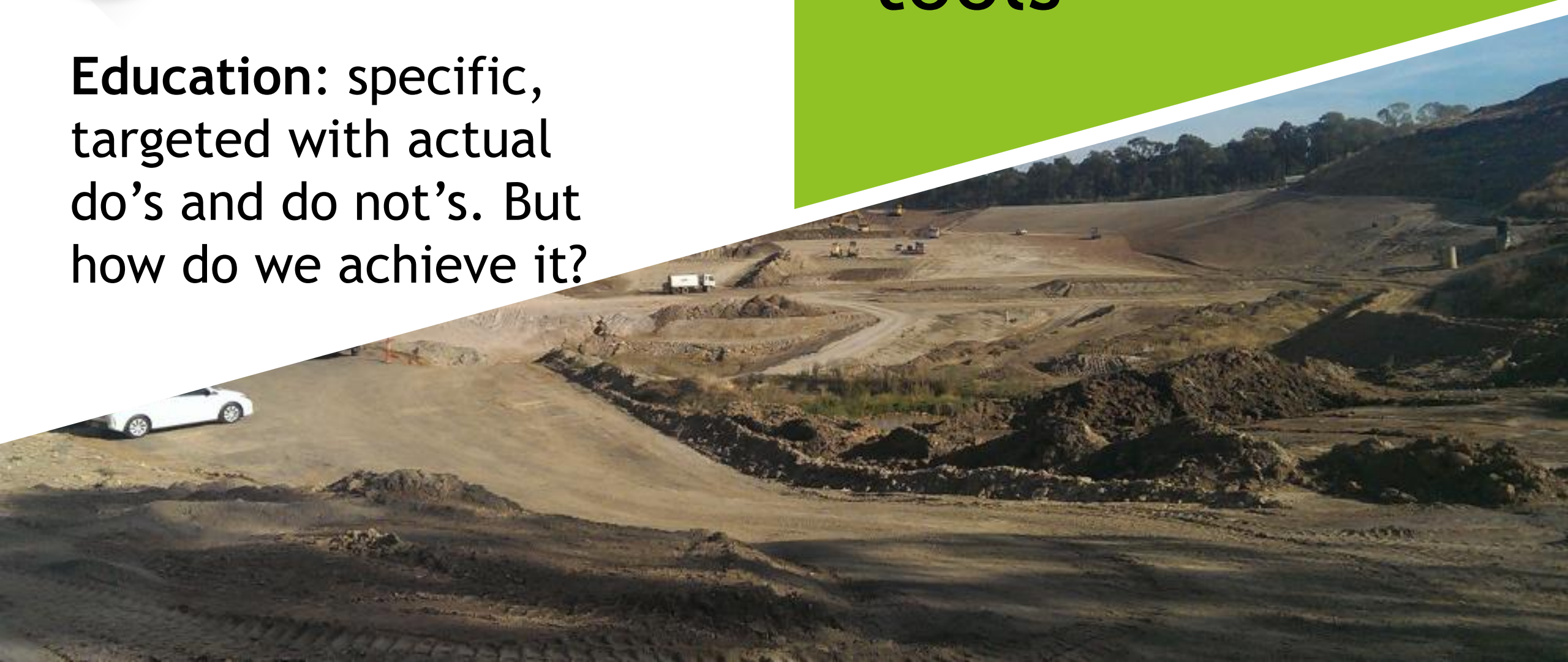
GREEN
TICKET



GREEN
TICKET

Education: specific, targeted with actual do's and do not's. But how do we achieve it?

Management tools





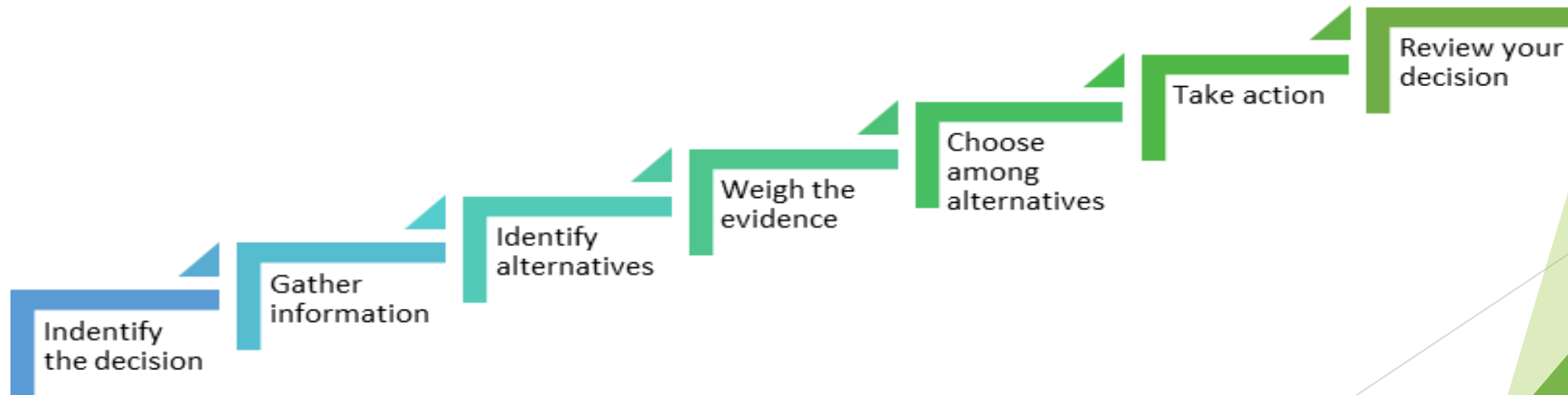
GREEN
TICKET

A step-by-step decision-making process can help lead to more deliberate, thoughtful decisions by organising relevant, leading and defining alternatives.

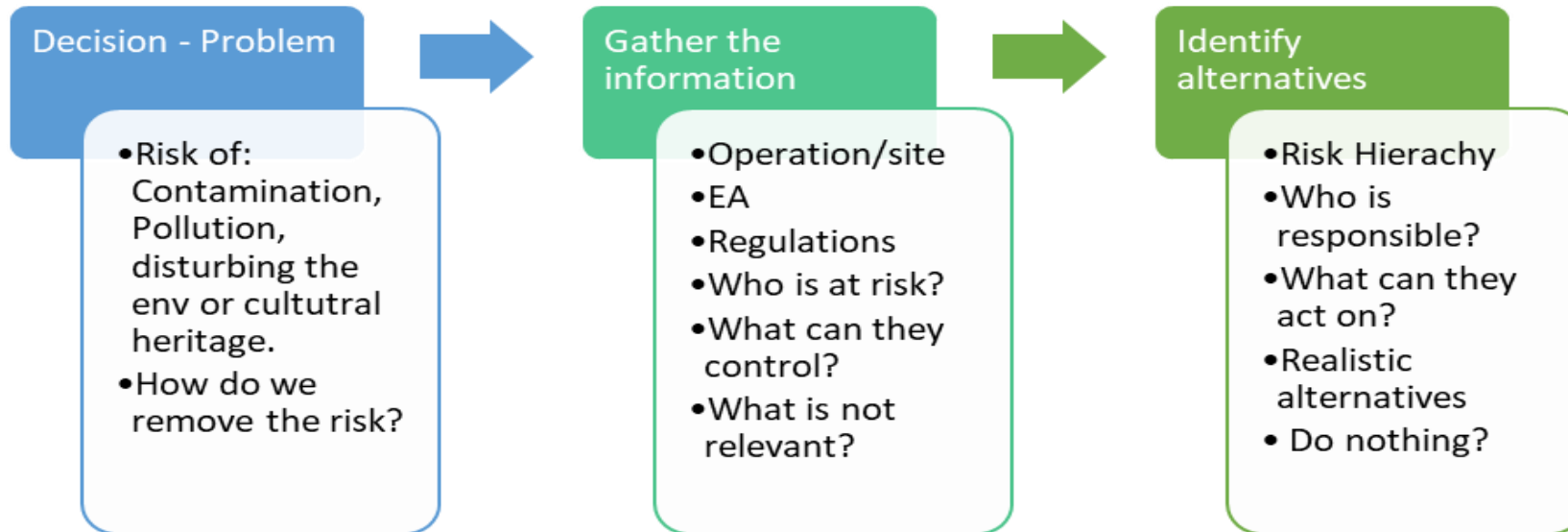
We need an effective decision-making tool.



Decision-making steps



Training requirements





GREEN TICKET

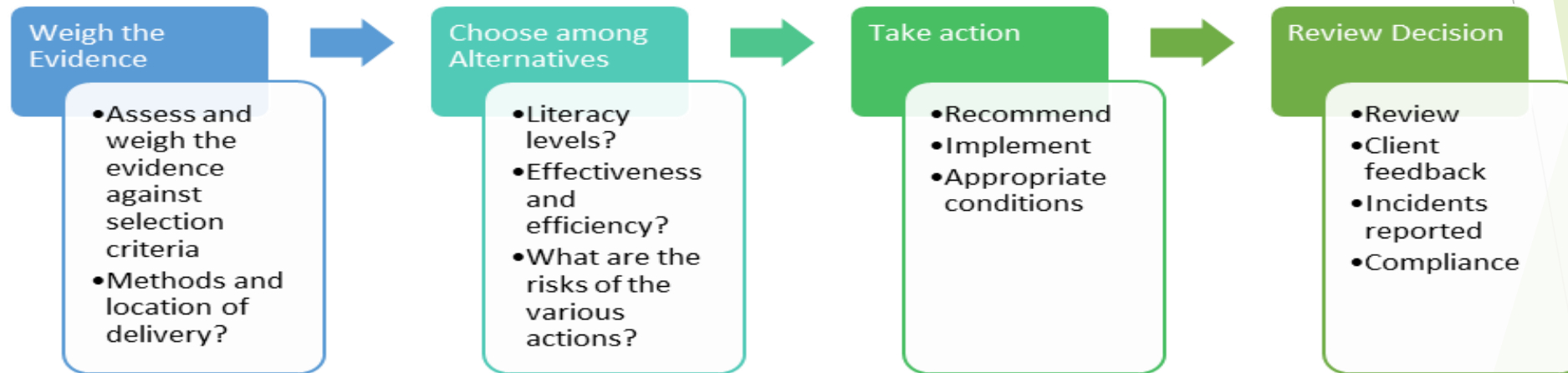
Who in the organisation is at risk?

- ❑ Board Room
- ❑ Senior Management
- ❑ Project managers
- ❑ Foremen/Supervisors
- ❑ Workforce

Who is at risk of contaminating, polluting, or disturbing the wrong environments, or cultural heritage?



Training requirements



Workforce awareness

- ▶ Why is it an issue?
- ▶ Who is at risk?
- ▶ What are the risks?
- ▶ What can they control?
- ▶ What are the do's and do not's they can implement?



GREEN
TICKET



GREEN
TICKET





GREEN
TICKET

