

*We acknowledge the Dja Dja Wurrung people who are the traditional owners of the places being discussed here, and we pay our respects to their elders, past and present.*

*We are grateful to all of those who have contributed their knowledge and enthusiasm to this project*



# Evolving Knowledge Along Bendigo Creek - A Case Study, Epsom VIC

**Kym Oataway, Leah Tepper, William Truscott (Biosis Pty Ltd)  
Racquel Kerr (DDWCAC)**

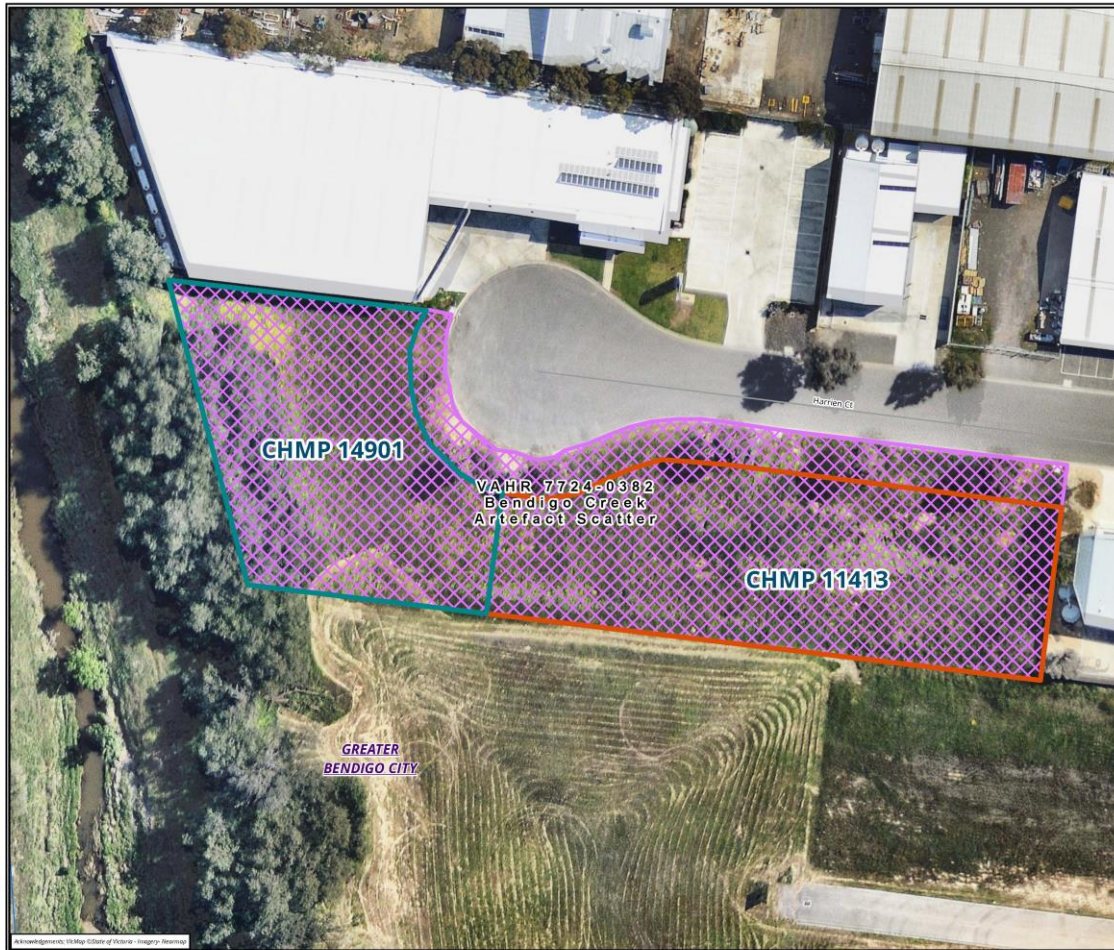


## What is Significant Ground Disturbance?

As defined in the Victorian *Aboriginal Heritage Regulations 2018*, Significant Ground Disturbance means disturbance of –

- (a) The topsoil or surface rock layer of the ground; or
- (b) a waterway –

By machinery in the course of grading, excavating, digging, dredging or deep ripping, but does not include ploughing other than deep ripping



**Map 1. CHMP 11413 and 14901, Harrien Court, Epsom**

0 5 10 15 20



Metres

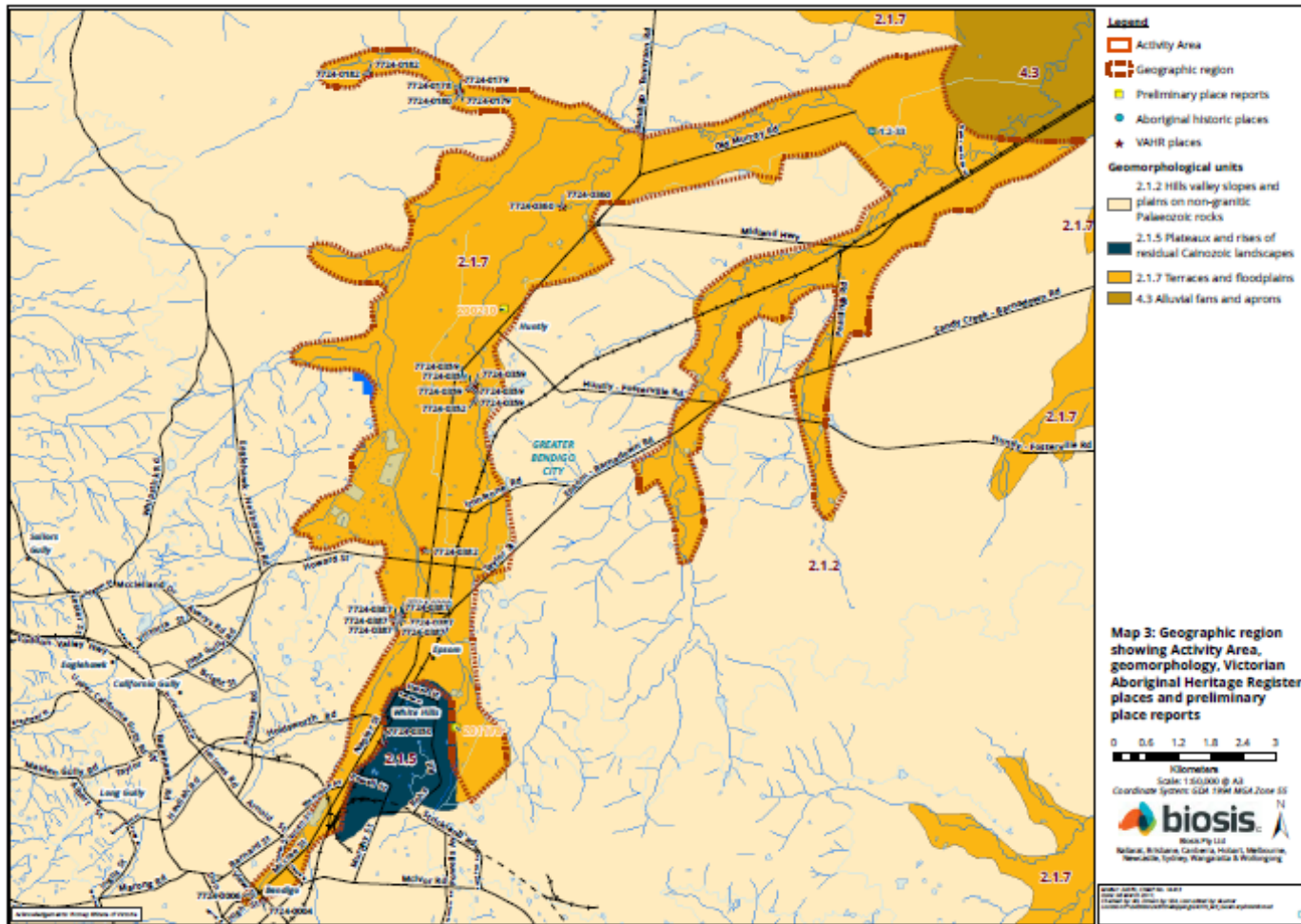
Scale: 1:500 @ A3

Coordinate System: GDA 1994 MGA Zone 55



Biosis Pty Ltd  
Albury, Ballarat, Melbourne,  
Newcastle, Sydney, Warragatta & Wollongong

Number: 24890  
Date: 11 January 2018  
Prepared and Issued: Drawn by: ARI, Last edited by: akirgine  
Location: C:\2016\020800\Maping\24890\_A1\_2018\_AK\_ave.dwg





1859.  
VICTORIA.

---

**REPORT**  
OF THE  
**ROYAL COMMISSION,**  
APPOINTED  
TO ENQUIRE INTO THE BEST METHOD  
OF  
**REMOVING THE SLUDGE**  
FROM  
**THE GOLD FIELDS;**  
TOGETHER WITH  
PROCEEDINGS OF THE COMMISSION, MINUTES OF EVIDENCE, AND  
APPENDICES.

---

PRESENTED TO BOTH HOUSES OF PARLIAMENT BY HIS EXCELLENCY'S COMMAND.

By Authority:  
JOHN FERRES, GOVERNMENT PRINTER, MELBOURNE.

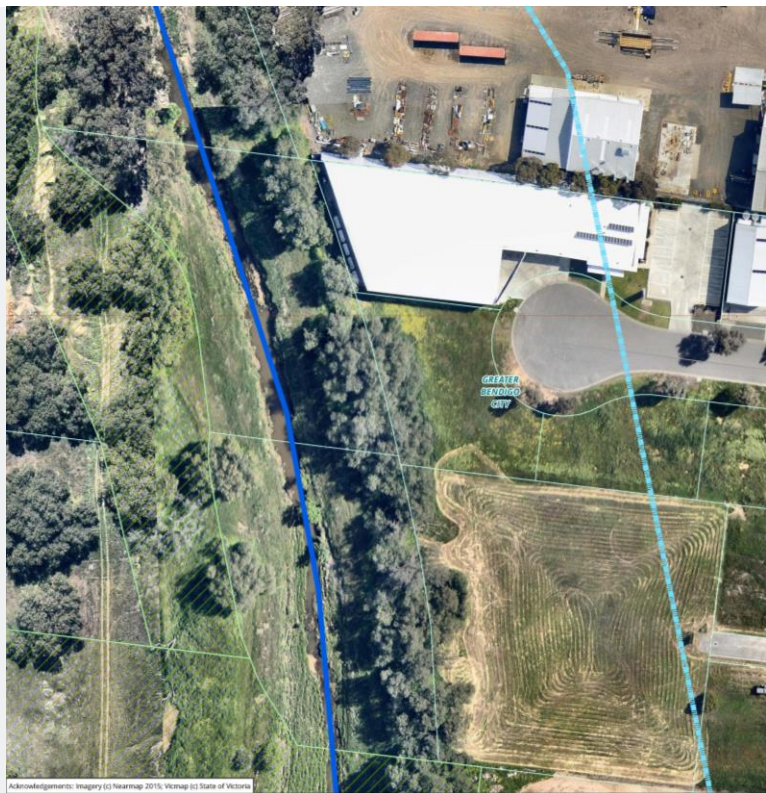
No. 7.

## Results:

So what does Faf look like?







Acknowledgements: Imagery (c) Nearmap 2015; Vicmap (c) State of Victoria



Meters

Scale: 1:750 @ A3  
 Coordinate System: GDA 1994 MGA Zone 55

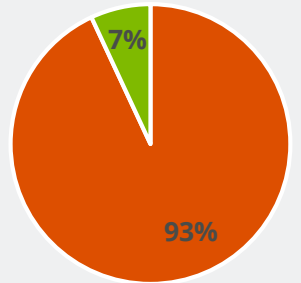


Biosis Pty Ltd  
 Subsites: Brisbane, Canberra, Melbourne, Newcastle, Sydney, Warragatta & Wollongong

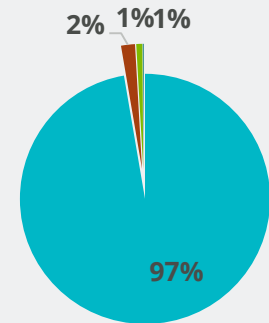
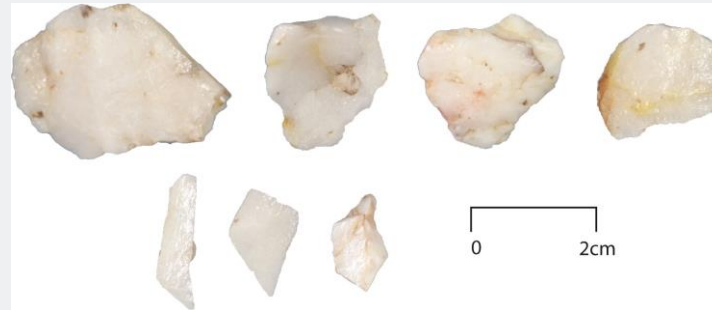
Issue: 2/4/16  
 Date: 20 January 2016  
 Created by: GDA. Drawn by: 2/4/16. Last edited by: virginie  
 Project: 15000 - Bendigo Creek Alignment  
 ©2016 All Rights Reserved

# Potential Bendigo Creek Alignment

## Bendigo Creek Artefact Scatter (VAHR 7724-0382)



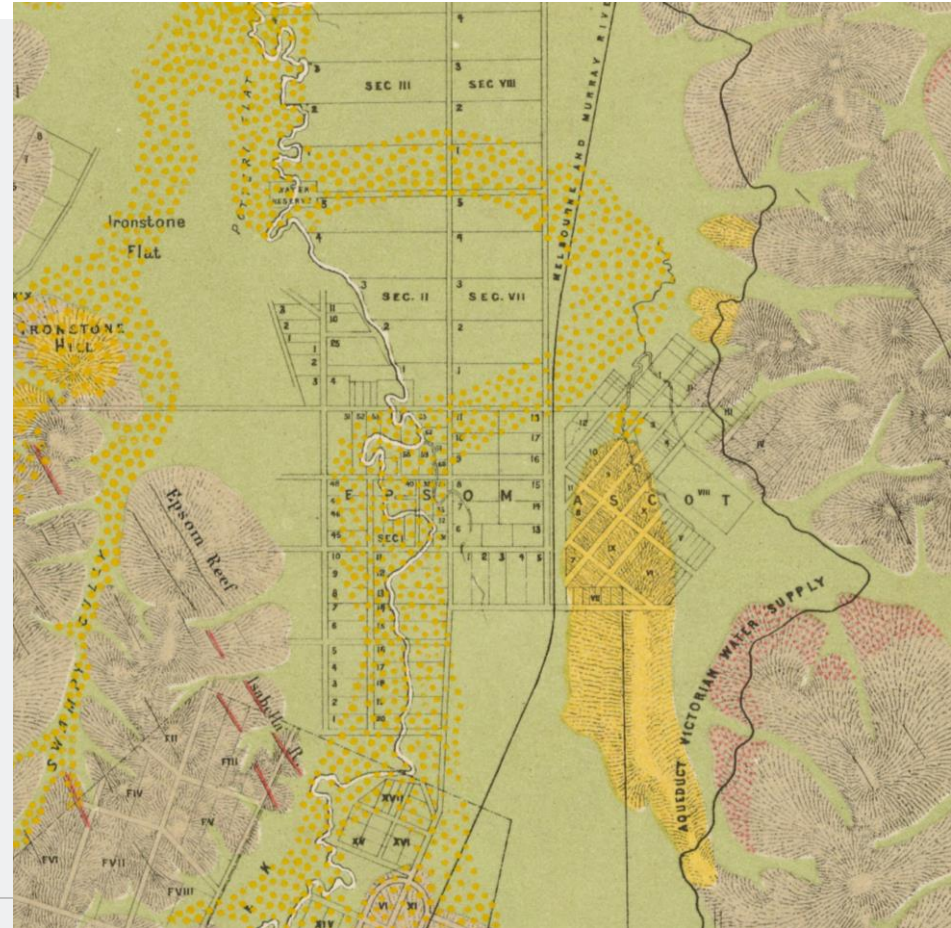
■ Alluvial sands ■ Faf



■ Quartz ■ Silcrete ■ Crystal Quartz ■ Other

# Faf or Fiction: Learning Outcomes

- > Intact cultural deposits remain along the Bendigo Creek corridor
- > Geotechnical works to inform methodology
- > Machine excavations to remove Faf and target natural land surfaces
- > Limit developments to impact Faf layer



## ABORIGINES OF

**VICTORIA.** *Recently I heard a talk given by John TULLY....briefly he said....*

The Bendigo area was not a favourable place for aborigines—no water and too many stones.

This area mainly used just to trek from one area to another.

Victoria was divided into eight areas and each had a natural boundary, such as a river, creek or ridge.

The Bendigo group moved from this area to Franklinton, then on to the Healesville area.

There were about 80 clans in Victoria.

Their language does have some differences but there is a common set of words [about 40 words] which are used all over Australia.

John had many other interesting facts to relate too.

15<sup>th</sup> of each month.

## *Dja Dja Wurrung and the Bendigo Creek: Past and Present*