

Gr  
Co

# A metropolis of three cities

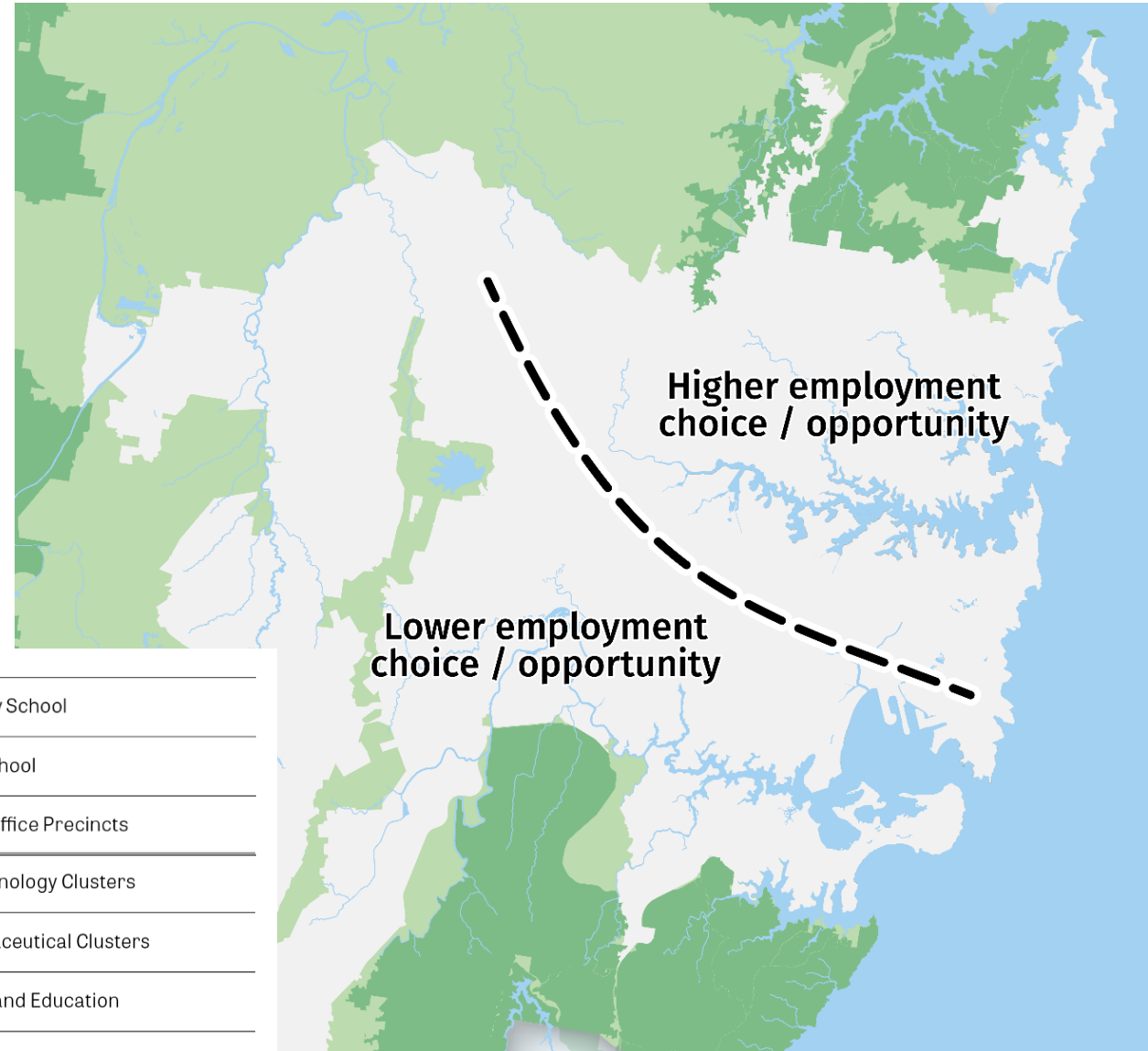
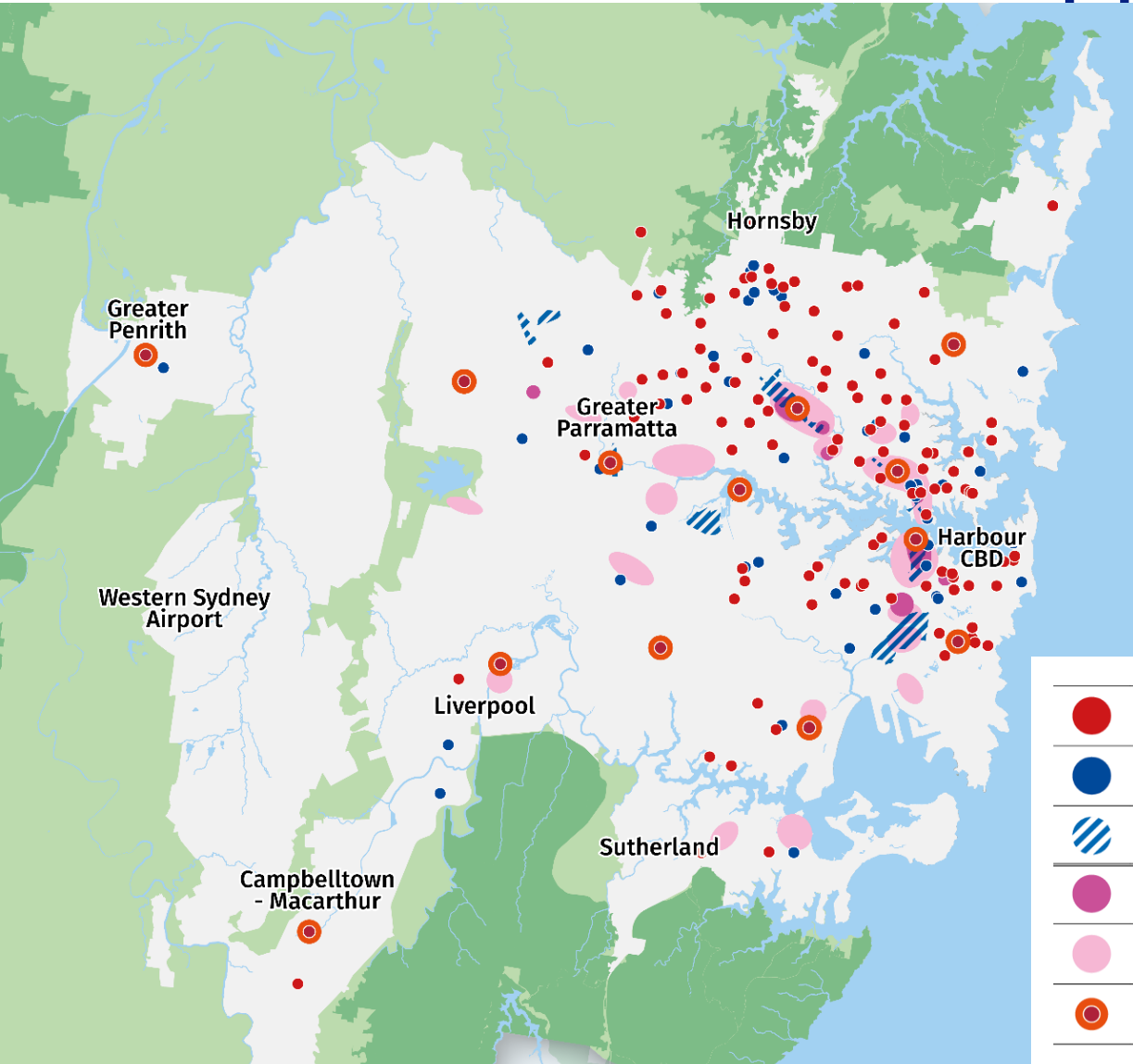
Lucy Turnbull AO, Chief Commissioner

1 November

EIANZ 2018



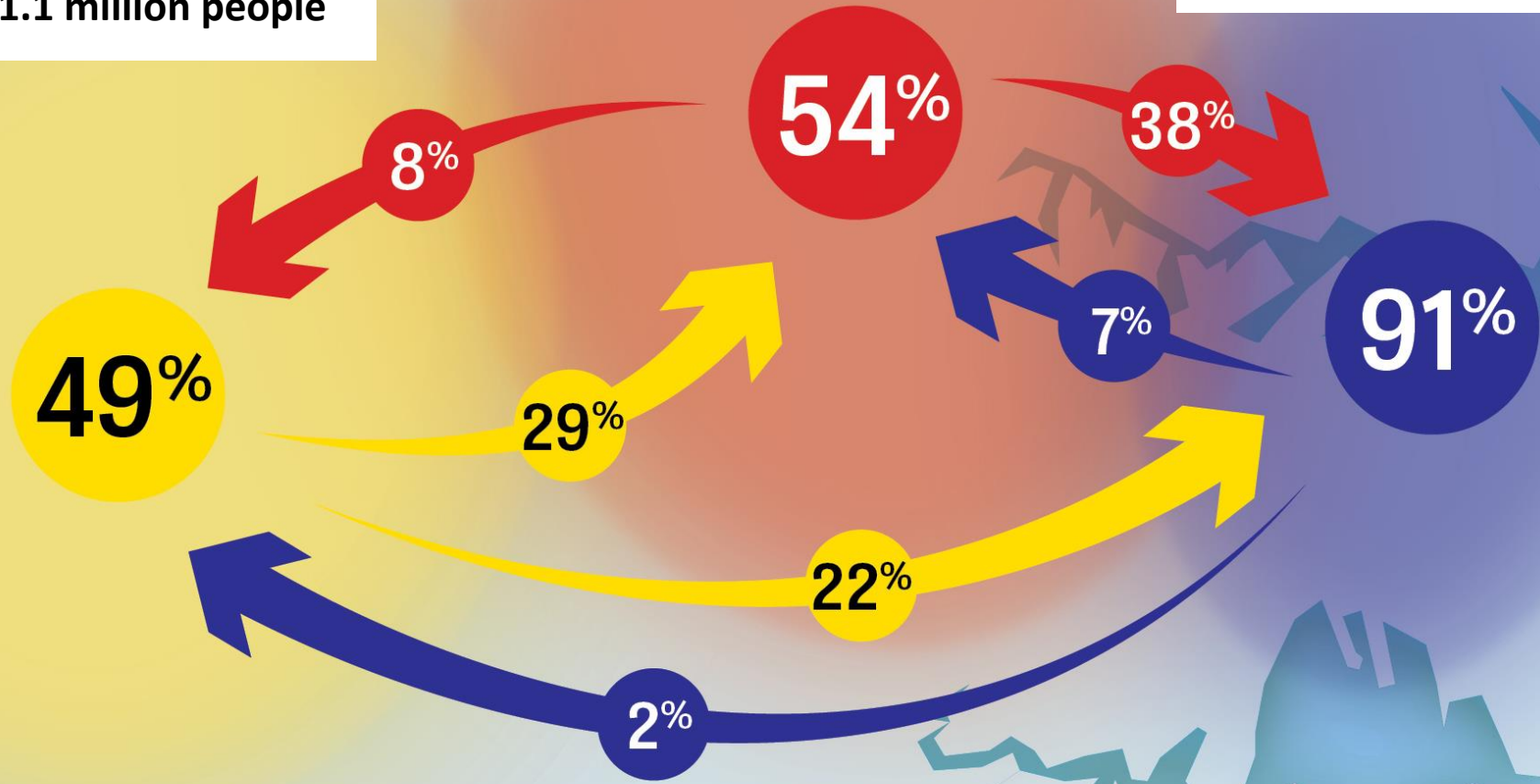
# Jobs and educational opportunities



**Western Parkland City**  
2016: 740,000 people  
2036: 1.1 million people

**Central River City**  
2016: 1.3 million people  
2036: 1.7 million people

**Eastern Harbour City**  
2016: 2.4 million people  
2036: 3.3 million people





# Two central organising themes

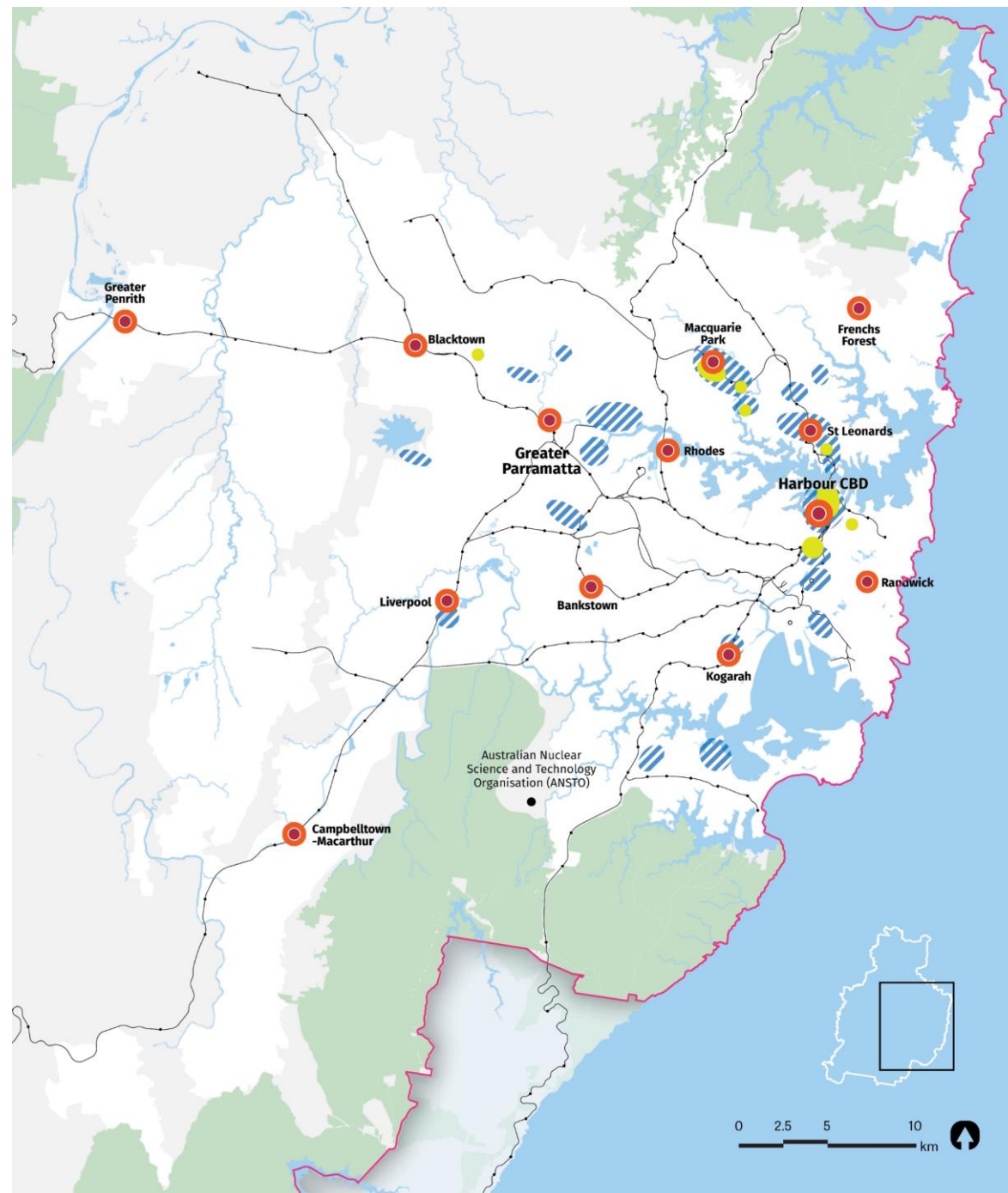
A Metropolis of Three Cities

A 30-minute city –  
rebalancing Greater Sydney

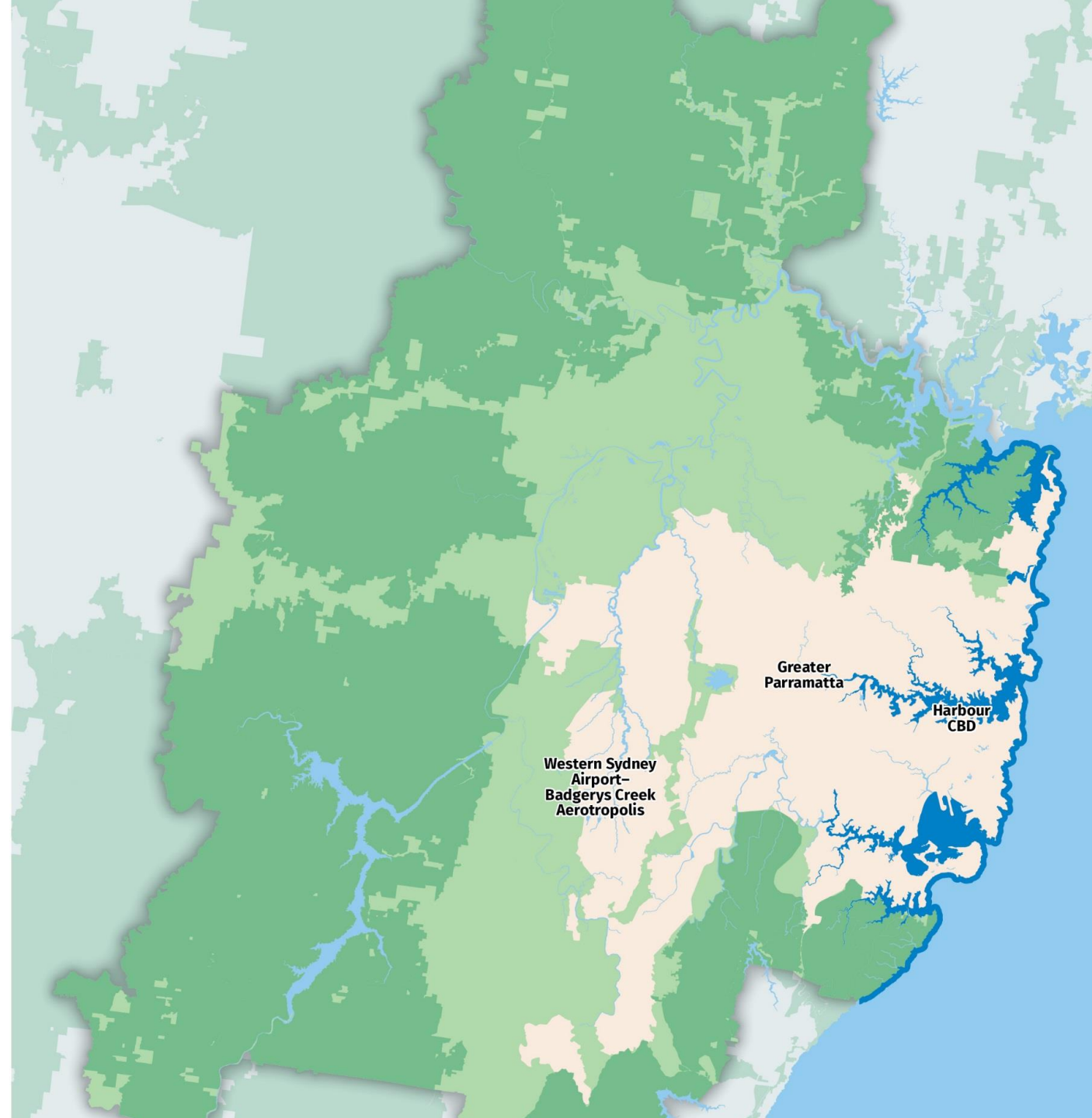




# Health and education precincts






# A city in its landscape

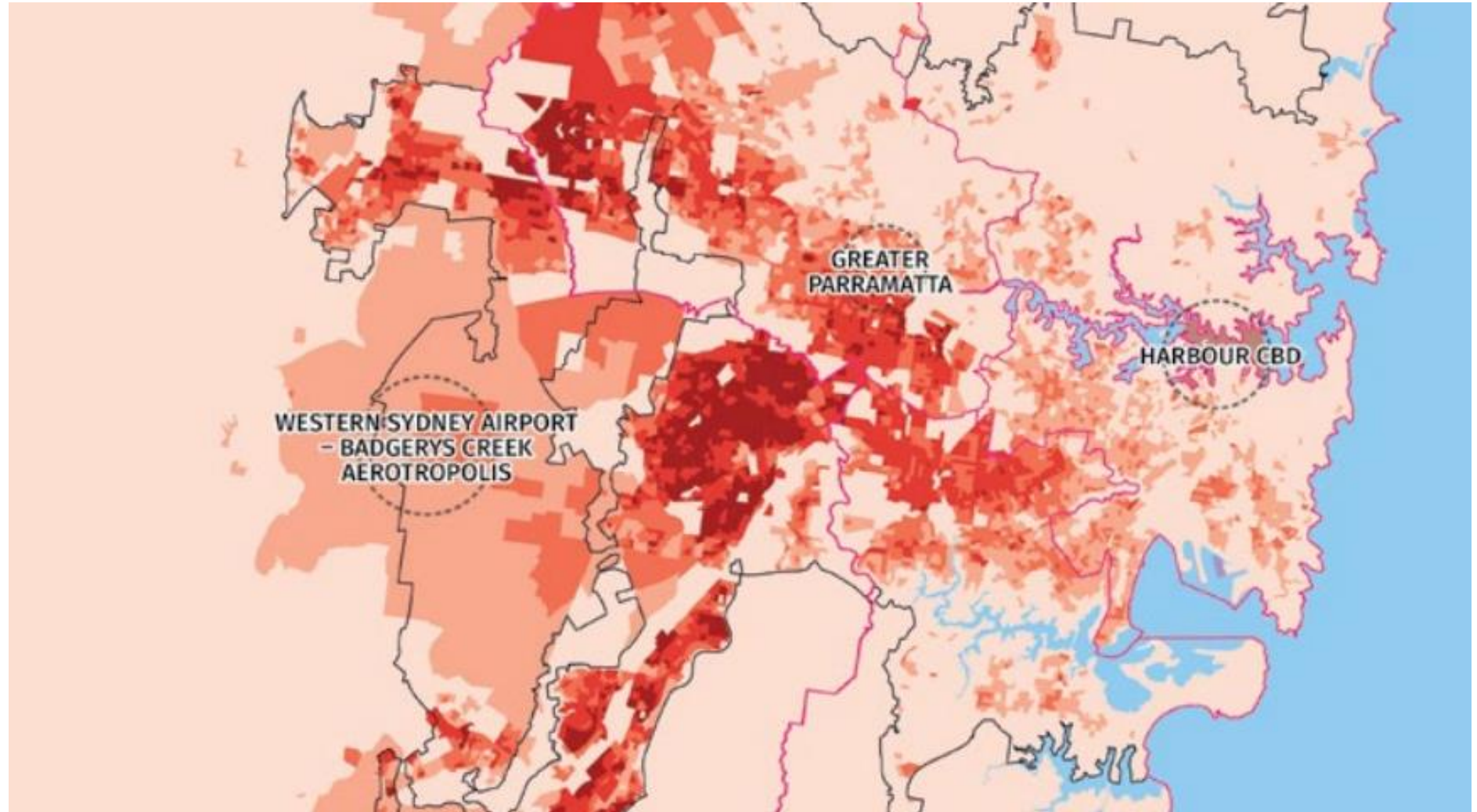
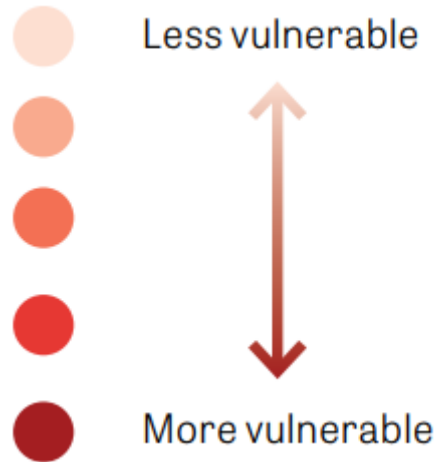




# Our varying climate

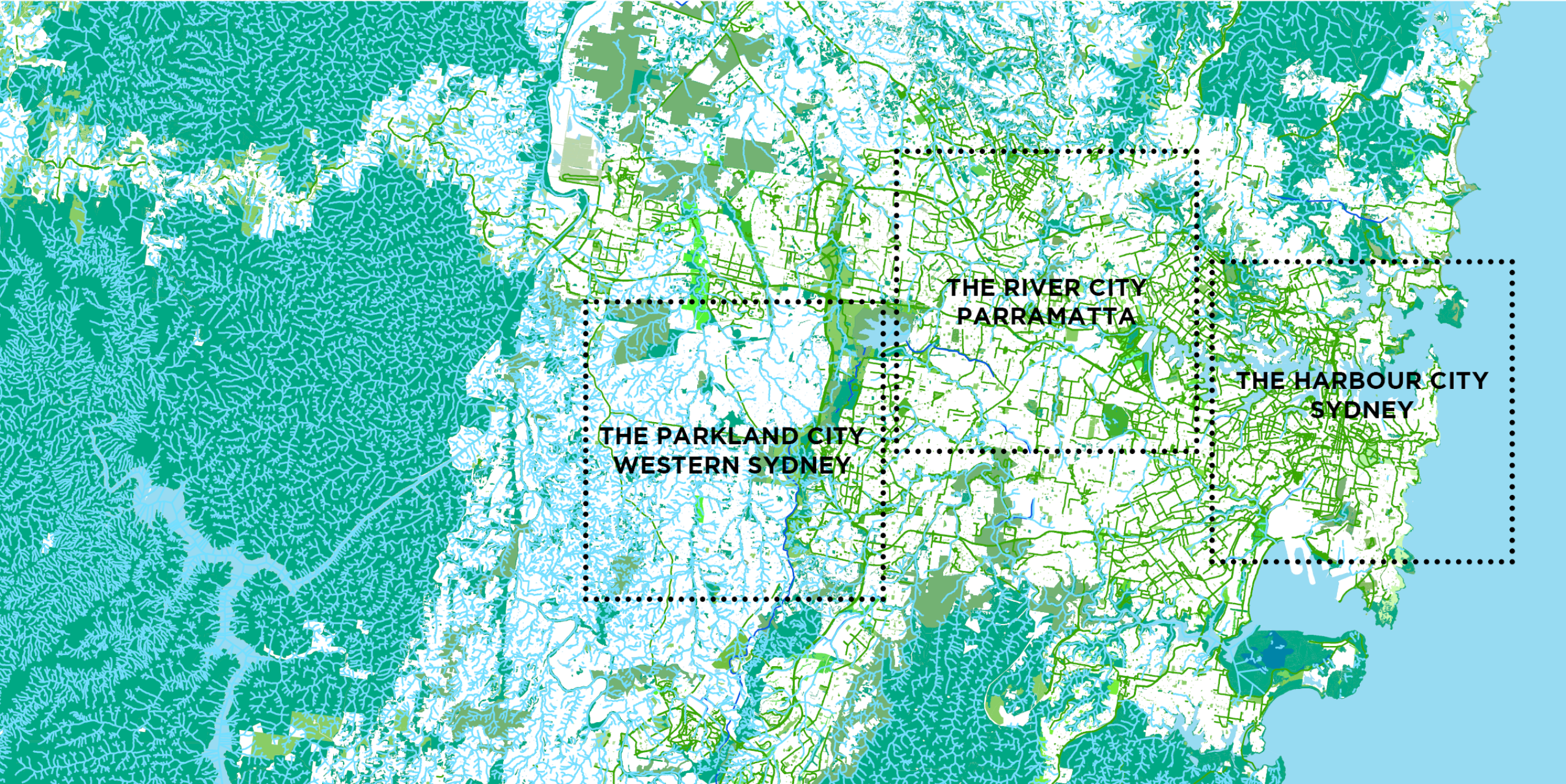
	Western Parkland City	Central River City	Eastern Harbour City
<b>Average annual rainfall</b> 	<b>683 mm</b> Badgerys Creek	<b>973 mm</b> Parramatta	<b>1,215 mm</b> Observatory Hill
<b>Average annual days over 35°C</b> 	<b>21 days</b> Penrith	<b>11 days</b> Parramatta	<b>3 days</b> Observatory Hill
<b>Tree canopy 2011*</b> 	<b>16%</b>	<b>17%</b>	<b>32%</b>

# Vulnerability to heatwave





# Greater Sydney's Green Grid





## Connect with the Commission



[/greatersydneycommission](#)



[/gscsydney](#)



[/greatersydneycommission](#)



[/greater-Sydney-commission](#)



[www.greater.sydney](http://www.greater.sydney)